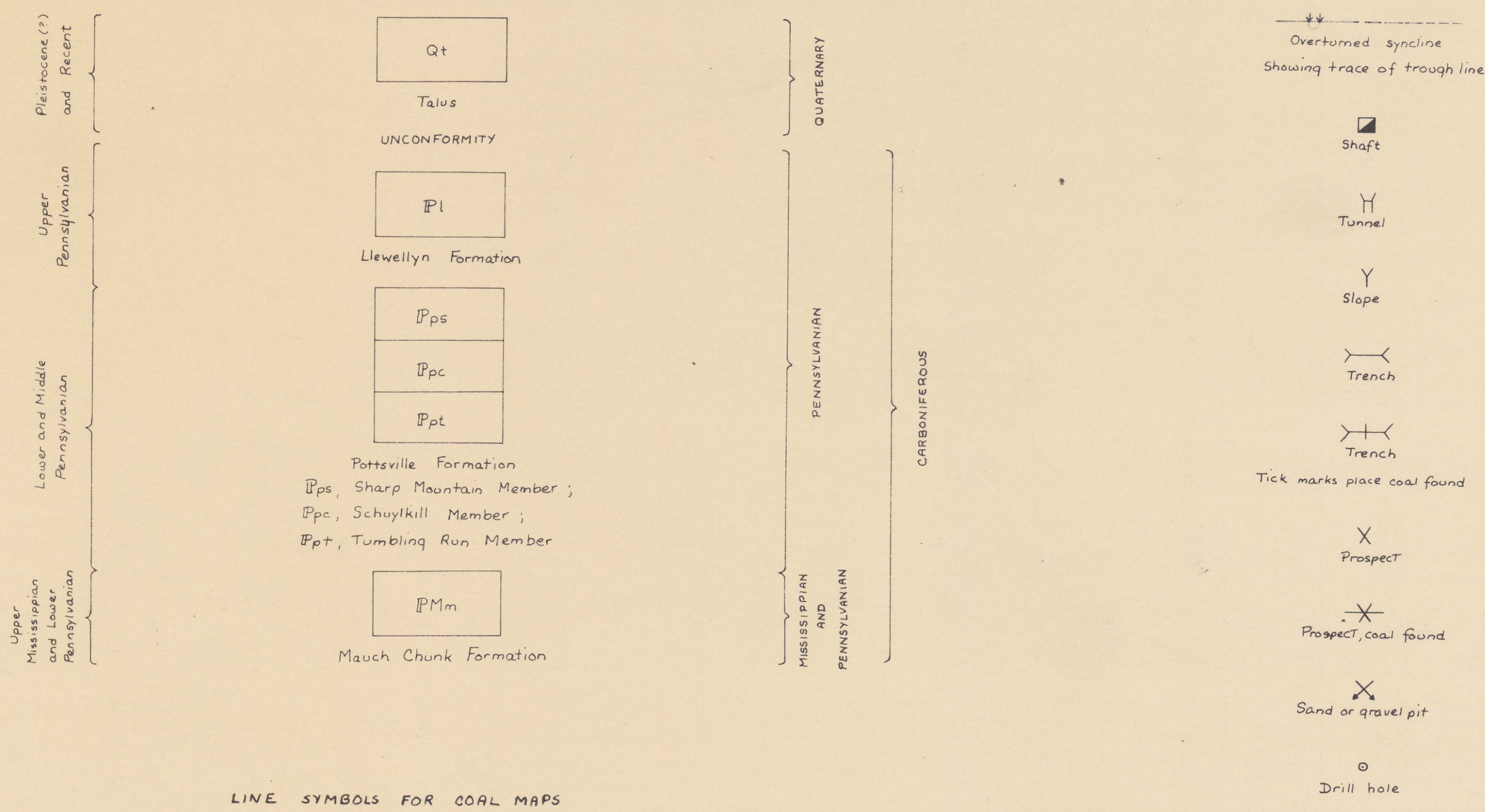


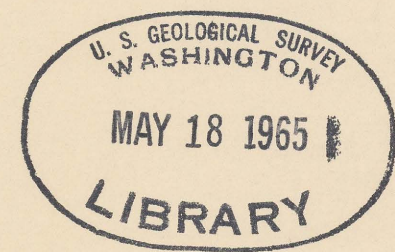
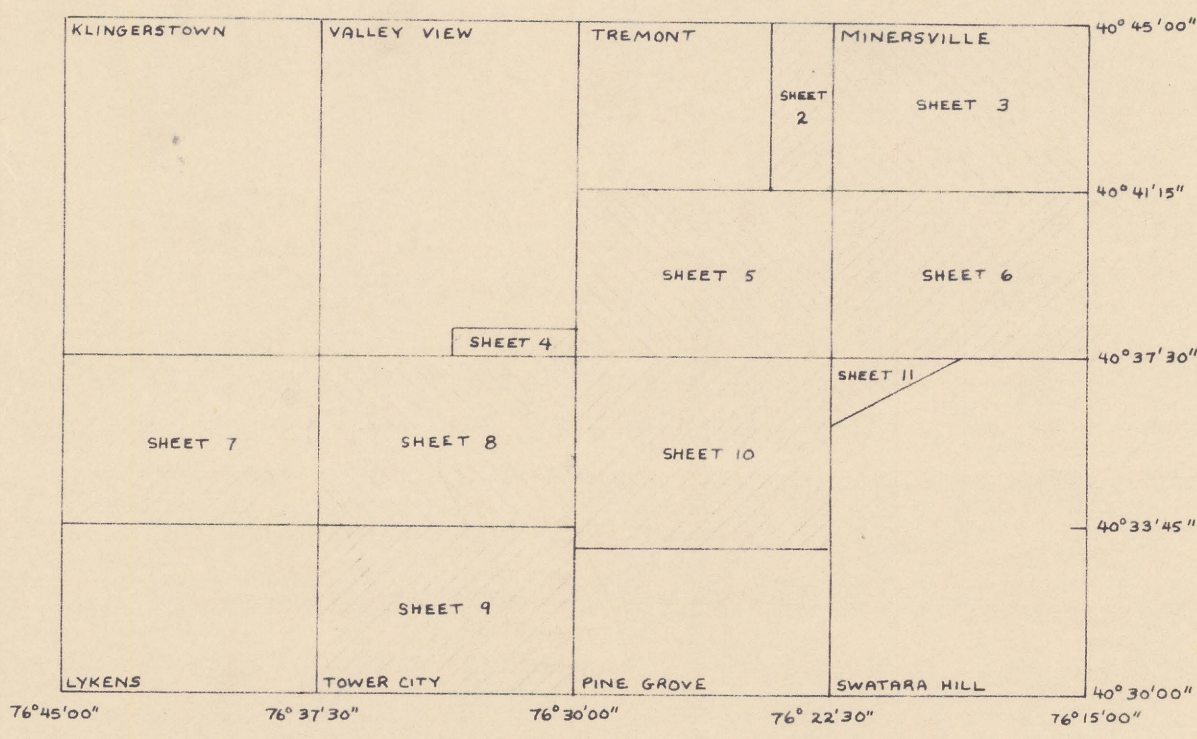
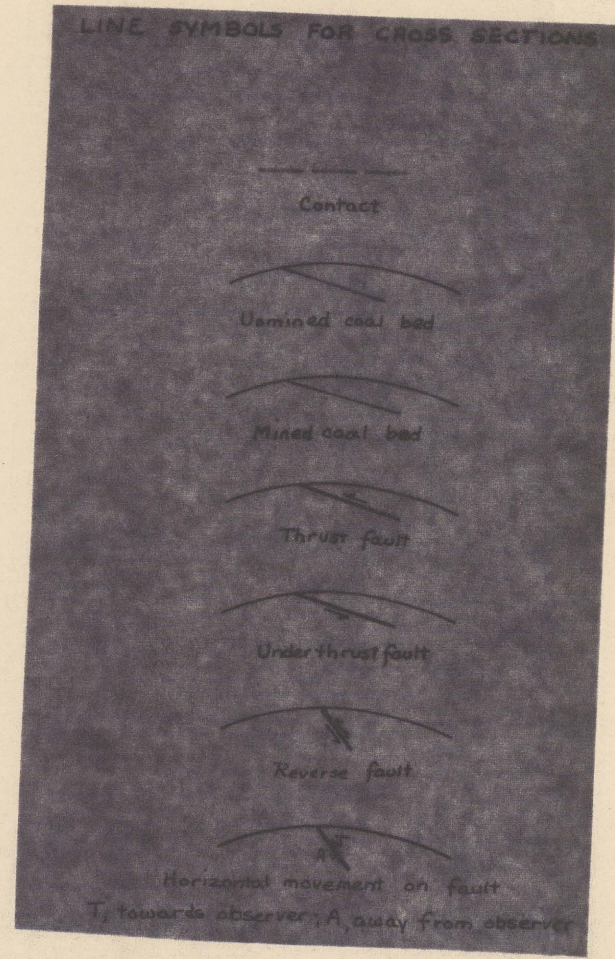
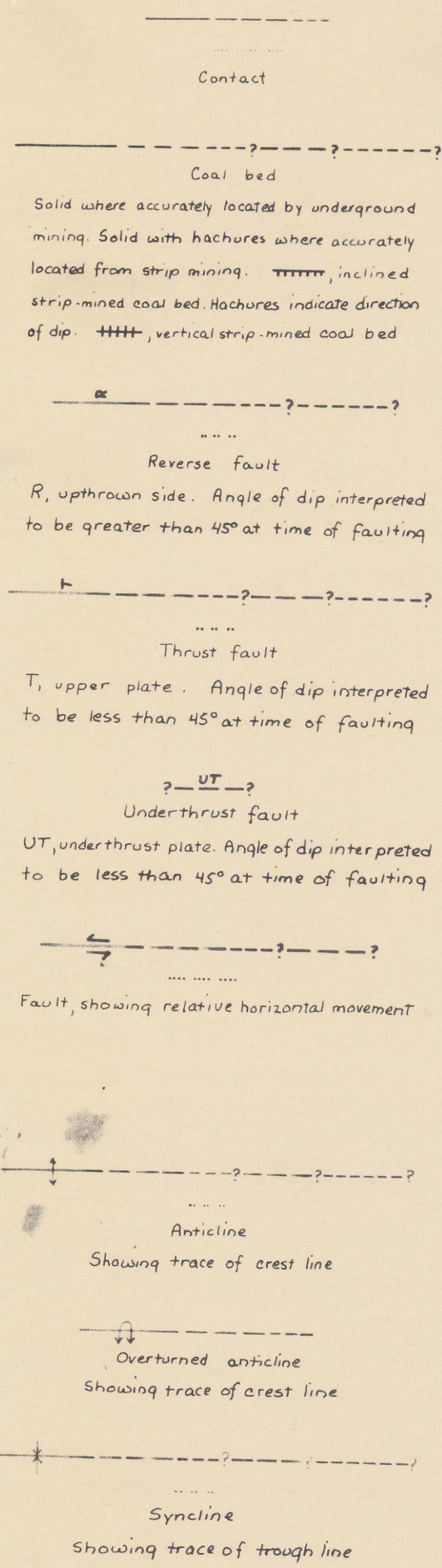
EXPLANATION



LINE SYMBOLS FOR COAL MAPS

Geologic features such as coal beds, contacts, faults, and fold lines whose traces are shown on the coal maps are classified according to the accuracy of location and the relative certainty of existence.

The traces of geologic features are shown by solid lines where accurately located, by long dashes where approximately located, and by short dashes where indefinitely located. The traces of geologic features, if concealed by an overlying mapped geologic unit, are shown by sequences of four dots where approximately located and by sequences of two dots where indefinitely located. The existence of geologic features in some localities is uncertain to varying degrees because of cover and heavy vegetation. They are classified as probable if there is little uncertainty and as doubtful or inferred if there is considerable uncertainty or if an alternate interpretation is possible. The traces of geologic features are shown by sequences of long dashes separated by queries where probable and by sequences of short dashes separated by queries where doubtful or inferred.



SHEET 1 - EXPLANATION AND INDEX MAP

GEOLOGIC MAPS OF THE WEST-CENTRAL PART OF THE SOUTHERN ANTHRACITE FIELD, PENNSYLVANIA  
CONSISTING OF TEN MAPS AND EXPLANATION

by Gordon H. Wood, Jr., J. Peter Trexler, Thomas M. Kehn, Julian Soren, and Andy Yelenosky

*Pennsylvania (Southern Anthracite field). Geol. 1:10,000. 1965.*  
*sheet 1-11, attached*  
*cop. 1.*



M(200)  
R29a  
no. 65-175  
Sheet 1 of 11  
2.1

U.S. Geological Survey  
OPEN FILE MAP  
This map is preliminary and has not been edited or reviewed for conformity with Geological Survey standards or nomenclature.