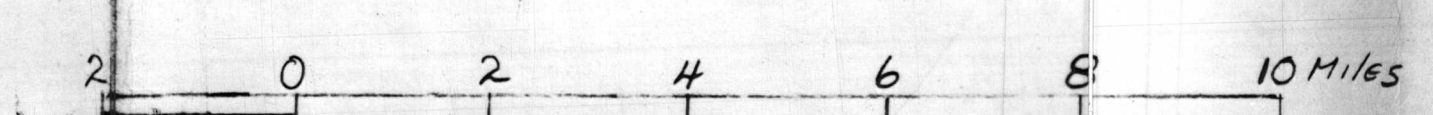


Base from U.S. Geological Survey 250,000 series quadrangle
KNOXVILLE 1951

AEROMAGNETIC MAP OF THE SOUTHERN PART OF THE KNOXVILLE QUADRANGLE, NORTH CAROLINA, SOUTH CAROLINA AND TENNESSEE

Scale 1:125,000



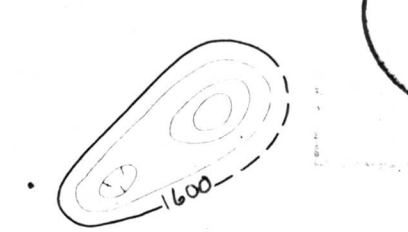
1966

PLEASE REPLACE IN POCKET
IN BACK OF BOUND VOLUME

Aeromagnetic Survey flown 1945, at 6000 feet barometric elevation by C.M. Mitchell.
Compiled by F.A. Petruseo and C.L. Long.

GEOPHYSICAL INVESTIGATIONS
PRELIMINARY MAP

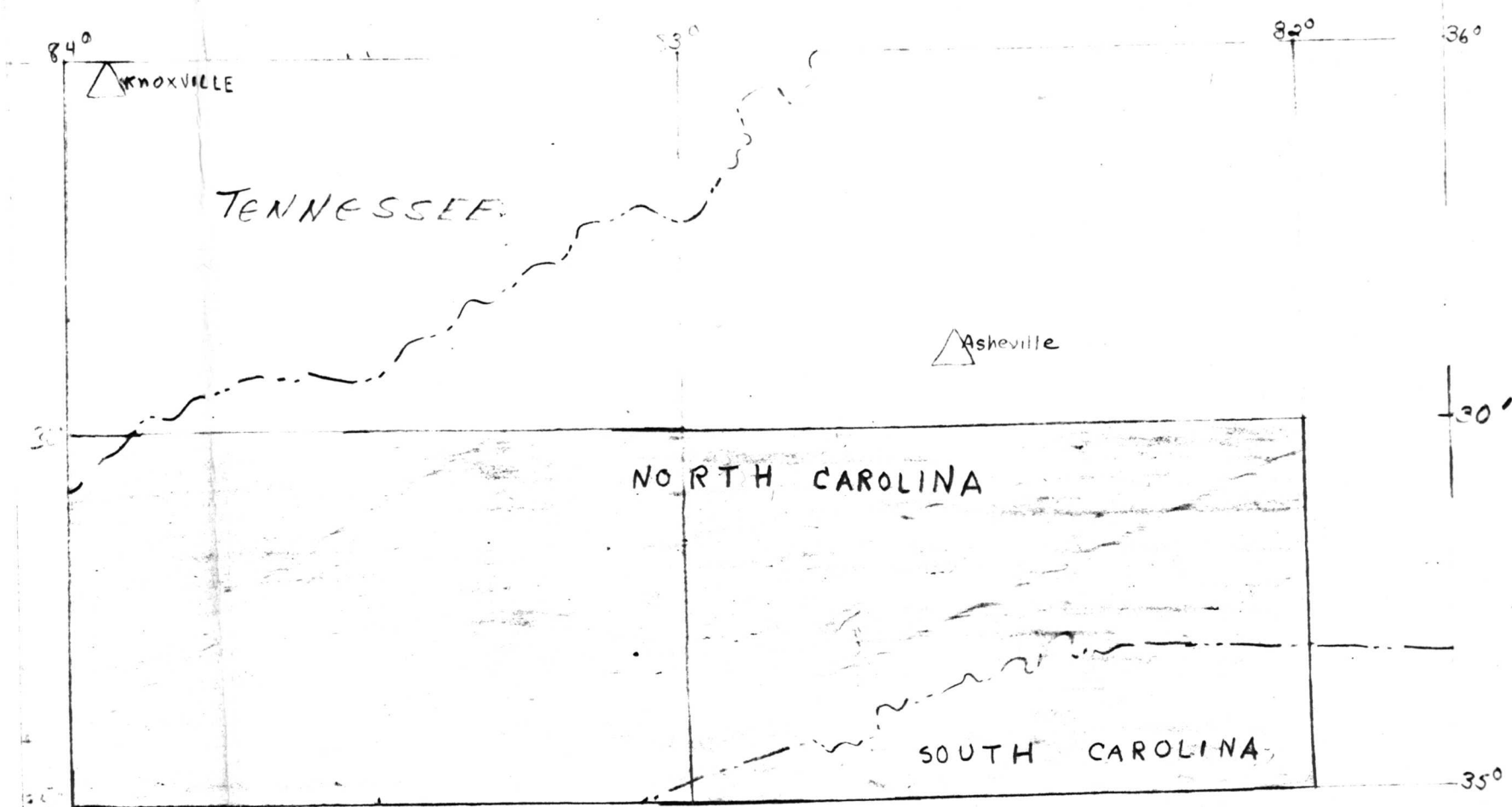
EXPLANATION



Magnetic contours showing total intensity
magnetic field of the earth in gamma,
relative to arbitrary datum.
Included to indicate character of magnetic
anomaly, related to any of the magnetic
contour intervals 20 and 40 gamma.

Flight path
Showing location and bearing of data

NOTE
Aeromagnetic data are obtained and compiled
along a continuous line, whereas ground magnetic
surveys are made of separate points. Error within
the normal limits of any magnetic measurement may
cause slight discrepancies between flight lines in an
aeromagnetic map, which would be more obvious
than similar discrepancies between points in a
ground magnetic map. For this reason no such care
should be exercised in evaluating magnetic features
that appear as elongations along a single aeromagnetic
line as in interpreting an anomaly indicated by a single ground station.



INDEX MAP SHOWING AREA OF THIS OPEN FILE MAP

This map is preliminary
and has not been edited
or revised for conformity
to Geological Survey
standards.

U. S. GEOLOGICAL SURVEY
Released to open files
Sept. 2, 1966