

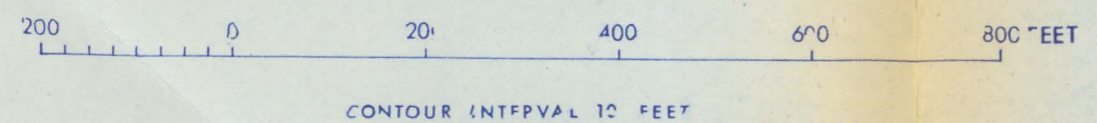
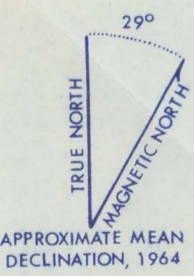
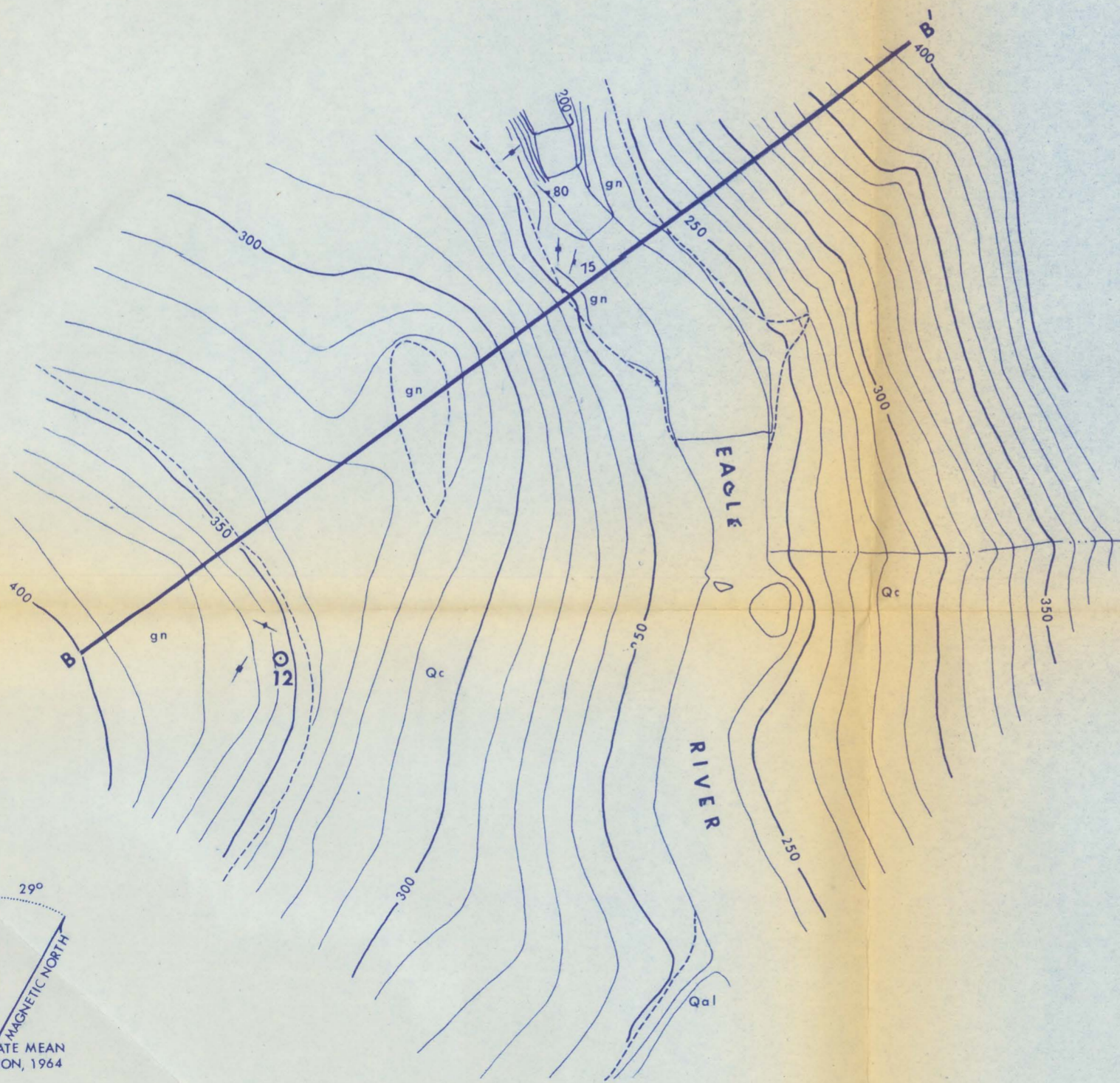
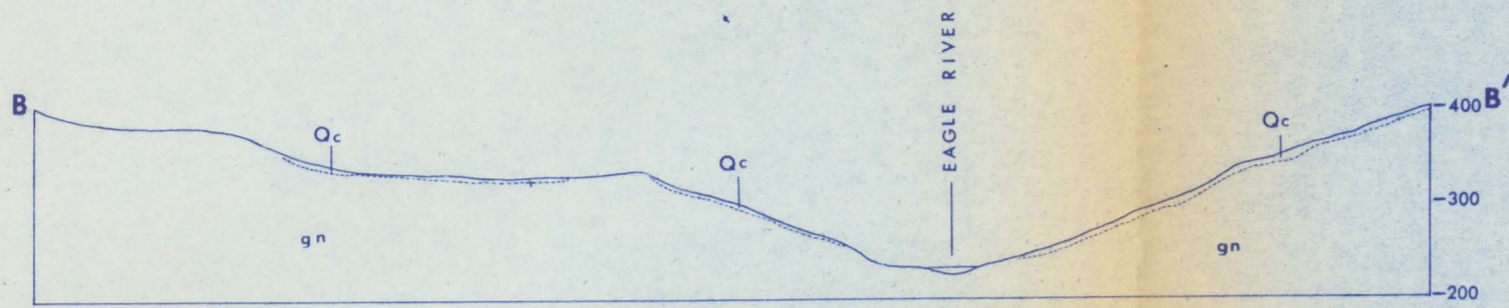
(200)

R290

no. 972



PLEASE REPLACE IN POCKET



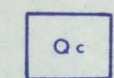
GEOLOGIC MAP OF THE LITTLE EAGLE LAKE DAMSITE
FIGURE 11

Base from Eagle Lake, Alaska, Damsites, River Survey, U. S. Geological Survey, 1964

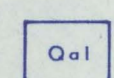
Geology by J. E. Callahan and A. A. Wanek, 1964

EXPLANATION

SURFICIAL DEPOSITS



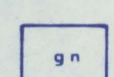
Colluvium and soil cover



Alluvium

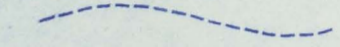
UNCONFORMITY

METAMORPHIC ROCKS

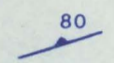


Composite gneiss

Biotite and hornblende biotite gneiss interlayered with gneissic quartz diorite



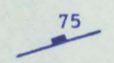
Approximate contact



Strike and dip of foliation



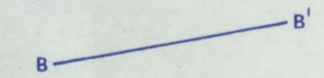
Strike of vertical foliation



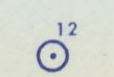
Strike and dip of joints



Strike of vertical joints



Possible axis line and line of cross section



Sample locality

QUATERNARY

PALEOZOIC TO LOWER JURASSIC