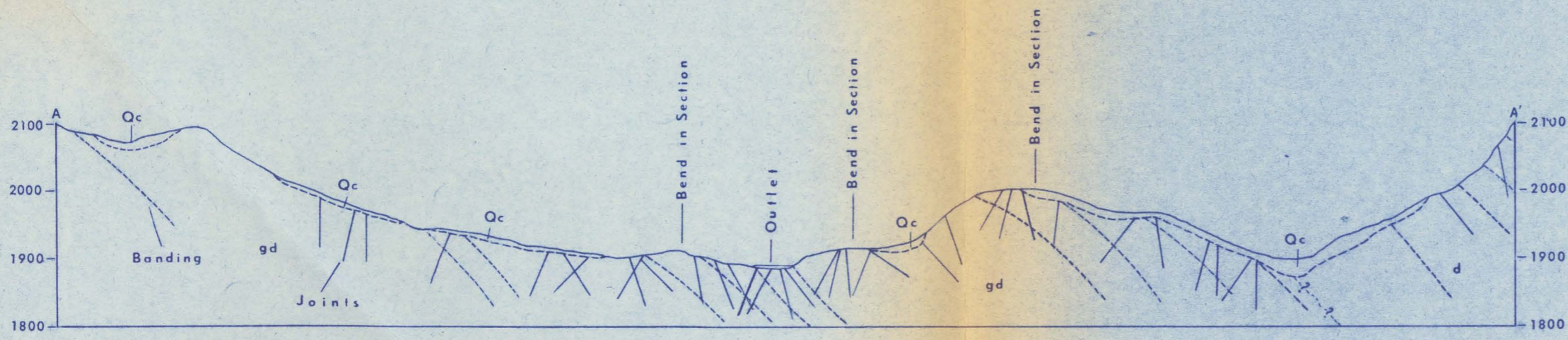
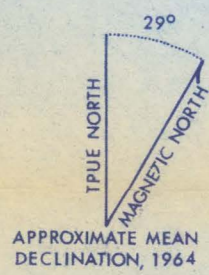
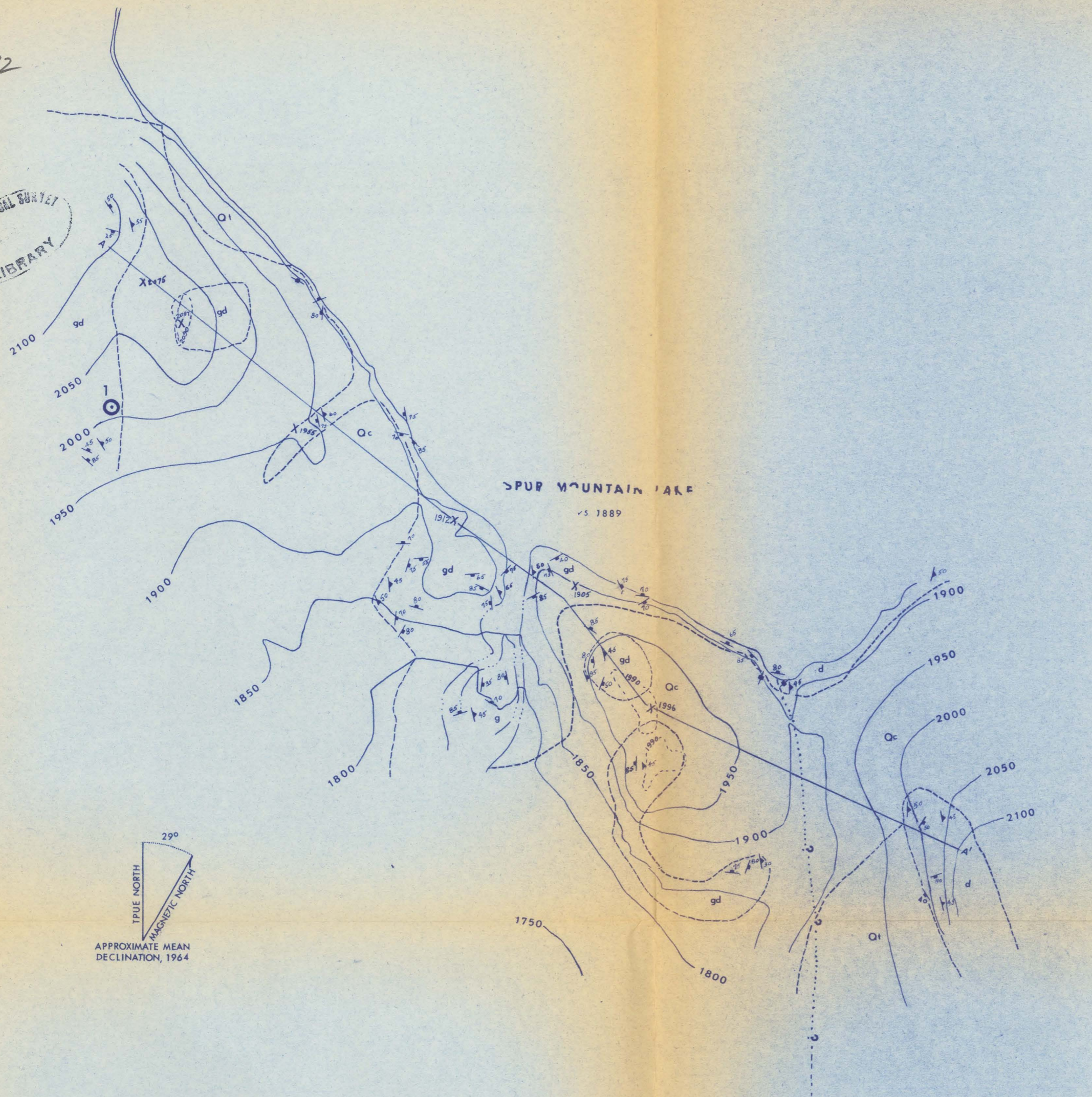


(200)
R290
no. 972



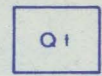
200 0 200 400 600 800 FEET

CONTOUR INTERVAL 50 FEET

GEOLOGIC MAP OF THE SPUR MOUNTAIN LAKE DAMSITE
FIGURE 8

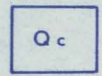
EXPLANATION

SURFICIAL DEPOSITS



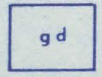
Talus

Fresh angular blocks of intrusive rock, as much as 10 feet in diameter



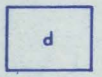
Soil cover and float

UNCONFORMITY



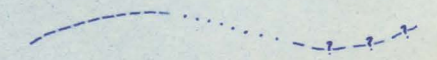
Granodiorite

Inhomogeneous, light-gray medium-grained rock grading to quartz monzonite and quartz diorite. Contains bands, lens-shaped inclusions, and segregations of diorite and more mafic rocks



Diorite

Fine-to medium-grained, distinctly banded rock with coarse-grained feldspathic and quartzose interbands. Has the appearance of injection gneiss in places

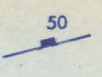


Contact

Short dashed where inferred or approximate; dotted where concealed; queried where doubtful



Strike and dip of gneissic banding



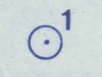
Strike and dip of joint



Strike of vertical joints



Possible axis line and line of cross section



Sample locality

Quaternary
Upper Jurassic or Lower Cretaceous