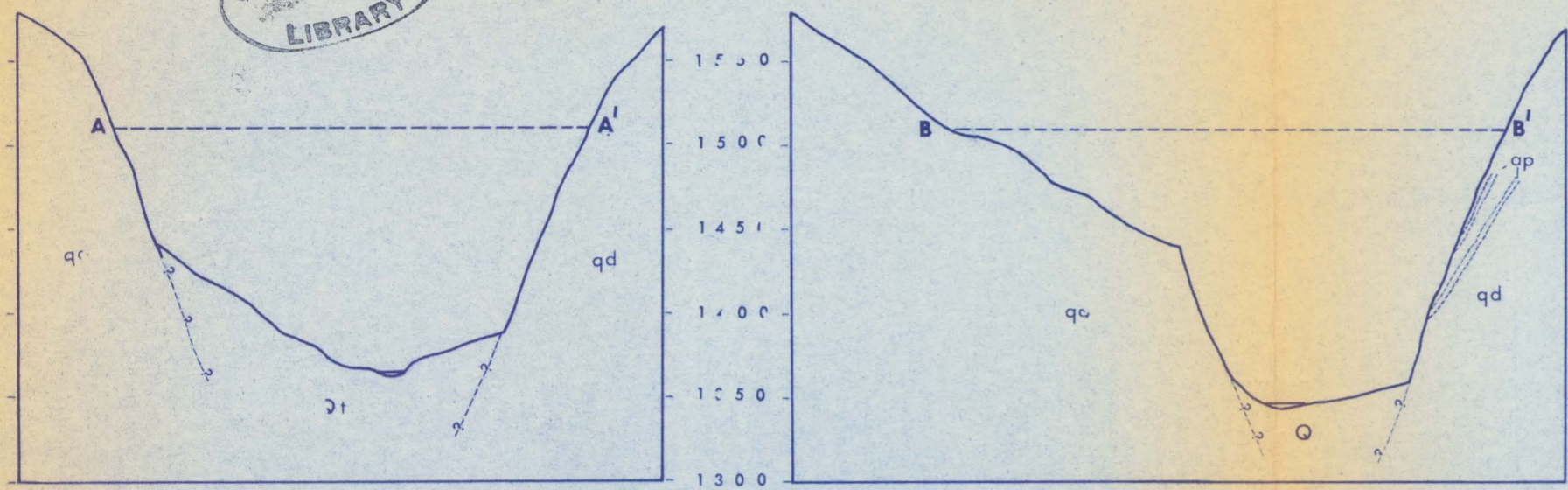
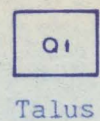


(200)
R296
no. 972



EXPLANATION

SURFICIAL DEPOSITS



Talus

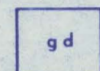
UNCONFORMITY

IGNEOUS ROCKS



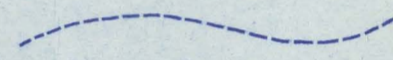
Biotite hornblende quartz diorite

Coarse-grained massive, and homogeneous. Cut by pegmatite dikes and veins and thick aplite dikes (ap)



Hornblende biotite granodiorite

Medium-grained, inhomogeneous, with gneissic banding. Grades to quartz monzonite and quartz diorite



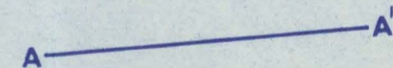
Approximate contact



Strike and dip of joint



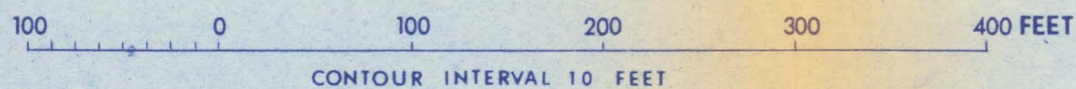
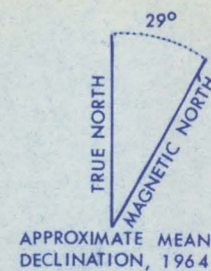
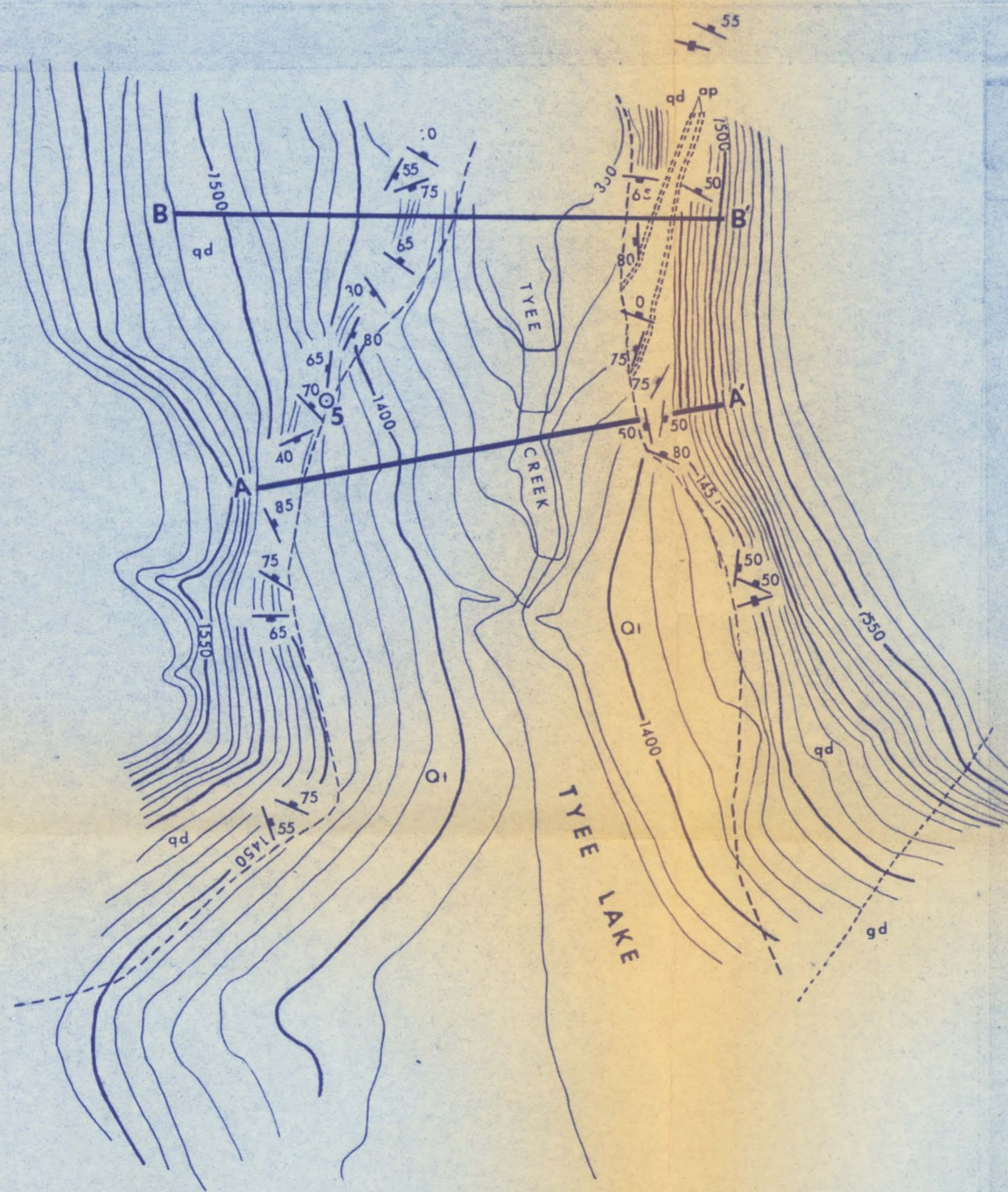
Strike of vertical joint



Possible dam axes and line of cross section



Sample locality



GEOLOGIC MAP OF THE TYEE LAKE DAMSITE
FIGURE 9