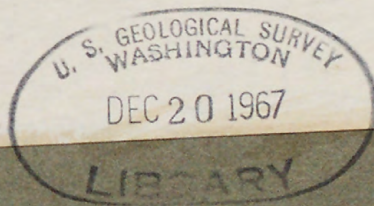


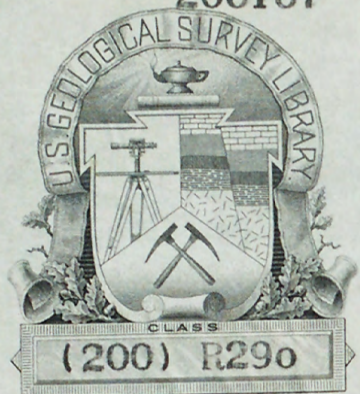
U. S. Geological Survey.

REPORTS-OPEN FILE SERIES, no. 962: 1967.



(200)
R290
no. 962

206167



no. 962, 1967

(200)

R290 - Int. 3006

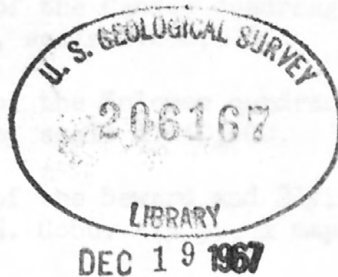
no. 962

ORGANIC DIVISION
U.S. GEOLOGICAL SURVEY
WASHINGTON, D.C.
20512

U.S. Geological Survey

Reports - open file series, no. 962:1967.

1. Metallic mineral resources map of the Alaska coast, Alaska, compiled by Edward H. Cobb. 4 p., 1 map, scale 1:250,000.
2. Metallic mineral resources map of the Alaska coast, Alaska, compiled by Edward H. Cobb. 4 p., 1 map, scale 1:250,000.
3. Metallic mineral resources map of the Alaska coast, Alaska, compiled by Edward H. Cobb. 4 p., 1 map, scale 1:250,000.
4. Metallic mineral resources map of the Alaska coast, Alaska, compiled by Edward H. Cobb. 4 p., 1 map, scale 1:250,000.
5. Metallic mineral resources map of the Alaska coast, Alaska, compiled by Edward H. Cobb. 4 p., 1 map, scale 1:250,000.
6. Metallic mineral resources map of the Alaska coast, Alaska, compiled by Edward H. Cobb. 4 p., 1 map, scale 1:250,000.
7. Metallic mineral resources map of the Alaska coast, Alaska, compiled by Edward H. Cobb. 4 p., 1 map, scale 1:250,000.
8. Metallic mineral resources map of the Alaska coast, Alaska, compiled by Edward H. Cobb. 4 p., 1 map, scale 1:250,000.



90
962

Weld - Int. 2905

GEOLOGIC DIVISION
U.S. GEOLOGICAL SURVEY
Washington, D.C.
20242

For release DECEMBER 20, 1967

The U. S. Geological Survey is releasing in open files the following reports. Copies are available for consultation at the offices listed beneath last item. Material from which copies can be made at private expense is available in the Alaskan Branch, USGS, 345 Middlefield Rd., Menlo Park, Calif. 94025:

1. Metallic mineral resources map of the Chandalar quadrangle, Alaska, compiled by Edward H. Cobb. 5 p., 1 map, scale 1:250,000.
2. Metallic mineral resources map of the Wiseman quadrangle, Alaska, compiled by Edward H. Cobb. 6 p., 1 map, scale 1:250,000.
3. Metallic mineral resources map of the Healy quadrangle, Alaska, compiled by Edward H. Cobb. 5 p., 1 map, scale 1:250,000.
4. Metallic mineral resources map of the Mount Hayes quadrangle, Alaska, compiled by Edward H. Cobb. 8 p., 1 map, scale 1:250,000.
5. Metallic mineral resources map of the Bendeleben quadrangle, Alaska, compiled by Edward H. Cobb. 9 p., 1 map, scale 1:250,000.
6. Metallic mineral resources map of the Candle quadrangle, Alaska, compiled by Edward H. Cobb. 5 p., 1 map, scale 1:250,000.
7. Metallic mineral resources map of the Solomon quadrangle, Alaska, compiled by Edward H. Cobb. 10 p., 1 map, scale 1:250,000.
8. Metallic mineral resources map of the Seward and Blying Sound quadrangles, Alaska, compiled by Edward H. Cobb. 13 p., 1 map, scale 1:250,000.

USGS depositories: Libraries, 1033 GSA Bldg., Washington, D.C. 20242; Bldg. 25, Federal Center, Denver, Colo. 80225; 345 Middlefield Rd., Menlo Park, Calif. 94025; also at 108 Skyline Bldg., 508 2nd Ave., Anchorage, Alaska 99501; Brooks Bldg., College, Alaska 99701; 441 Federal Bldg., Juneau, Alaska 99801. Alaska Div. Mines and Minerals depositories: 3001 Porcupine Dr., Anchorage, Alaska 99504; University Ave., College, Alaska 99701; 509 Goldstein Bldg., Juneau, Alaska 99801.

200)
290
w.962



UNITED STATES DEPARTMENT OF THE INTERIOR

UB - GEOLOGICAL SURVEY

*Reports - open file
series, no. 962*

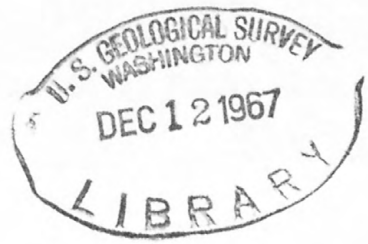
METALLIC MINERAL RESOURCES MAP OF THE HEALY QUADRANGLE, ALASKA

Compiled by

Edward H. Cobb 1916-

Livingston

em



Open-file map

1967

This map is preliminary
and has not been edited or
reviewed for conformity with
Geological Survey standards
or nomenclature.

LODE DEPOSITS

Number	<u>Name and principal reference(s)</u>	Commodity <u>1/</u> , <u>2/</u>
1	McCall: Unpublished data	Pb, Ag
2	Rock Creek: Joesting (1943), p. 13	Sb
3	Kansas Creek: Capps (1912), p. 54	Au
4	Chute Creek: Capps (1912), p. 53	Au
5	Kansas Creek: Joesting (1942), p. 11; Ebbley and Wright (1948), p. 36-37	Sb, Au, Pb, Zn
6	Glory Creek: Joesting (1943), p. 13	Sb, Au, Pb, Ag, Zn
7	Cantwell River (or Creek): Unpublished data	Mn
8	Ready Cash: Ross (1933a), p. 318-319	Cu, Au, Pb, Ag, Zn
9	Copper King: Ross (1933a), p. 320-321	Cu, Au, Ag
10	Lindfors: Ross (1933a), p. 321	Cu, Au, Zn
11	Golden Zone: Ross (1933a), p. 321-325; Smith (1942), p. 27; Unpublished data Mayflower: Ross (1933a), p. 325-326	<u>Cu</u> , <u>Au</u> , Pb, Ag, Zn <u>Cu</u> , <u>Au</u> , Ag
12	Flaurier: Capps (1919), p. 230 Riverside: Ross (1933a), p. 326-327	Au, Ag Cu, Au, Pb, Ag, Zn
13	Silver King: Ross (1933a), p. 327-328	Sb, Cu, Au
14	Liberty: Ross (1933a), p. 328	Au, Ag
15	Eagle (Northern Light): Capps (1919), p. 223-224; Ross (1933a), p. 329-330 Lucrata: Ross (1933a), p. 328-329	Sb, Cu, Au, Ag, Zn Au, Ag
16	North Carolina: Capps (1919), p. 229-230	Sb, Au
17-19	Butte Creek: Saunders (1961), p. 38	Cu
20	Unnamed occurrence: Kaufman (1964), p. 10, 12	Fe
<u>1/</u>	Symbols - Sb, antimony; Cu, copper; Au, gold; Fe, iron; Pb, lead; Mn, manganese; Ag, silver; Zn, zinc.	
<u>2/</u>	Symbol underlined indicates recorded production.	

<u>Number</u>	<u>Name and principal reference(s)</u>	<u>Commodity</u> <u>1/</u> , <u>2/</u>
21-22	Unnamed occurrence: Kaufman (1964), p. 10	Cu
23-25	Windy Creek: Saunders (1961), p. 38	Cu
26-29	Windy Creek: Kaufman (1964), p. 5-6	Cu
30	Greathouse: Kaufman (1964), p. 5-6	Cu, Ag
31	Pass Creek: Kaufman (1964), p. 6-7	Cu
32	Alaska Exploration & Mining Co.: Ross (1933b), p. 461-463; Tuck (1938), p. 114-117	<u>Au</u> , Ag
33	Campbell & Boedeker: Tuck (1938), p. 117-118	Au, Ag
34	Accident: Tuck (1938), p. 119 Yellowhorn: Tuck (1938), p. 118-119	Au Au, Ag
35	Lucky Top: Tuck (1938), p. 119-120	Au
36	Wagner: Tuck (1938), p. 120-121	Au

1/ Symbols - Cu, copper; Au, gold; Ag, silver.

2/ Symbol underlined indicates recorded production.

PLACER DEPOSITS

<u>Number</u>	<u>Name and principal reference(s)</u>	<u>Commodity</u> <u>1/</u> , <u>2/</u>
37	Marguerite Creek: Smith (1942), p. 48	Au
38	Fox Gulch: Maddren (1918), p. 396-397 Homestake and Platt Creeks: Capps (1912), p. 44-46; Maddren (1918), p. 395-397	Au Au
39	McCuen Gulch: Maddren (1918), p. 387-388, 397-398	Au
40	Moose Creek: Moffit (1933), p. 345	Au
41	Dry Creek: Capps (1912), p. 51	Au
42	Newman Creek: Capps (1912), p. 52	Au

1/ Symbol - Au, gold.

2/ Gold has been produced from most of the listed placers.

<u>Number</u>	<u>Name and principal reference(s)</u>	<u>Commodity</u> <u>1/</u> , <u>2/</u>
43	Portage Creek: Capps (1912), p. 52	Au
44	Alaska Creek: Maddren (1918), p. 376, 378	Au
45	French Gulch: Maddren (1918), p. 376, 378	Au
46	Home (Gagnon) Creek: Maddren (1918), p. 376-378	Au
47	Bryn Mawr Creek: Capps (1919), p. 221, 231	Au
48	Shotgun Creek: Capps (1919), p. 231	Au
	Timberline Creek: Moffit (1912), p. 65	Au
49	Gold Creek: Moffit (1912), p. 54	Au
50	Wickersham Creek: Moffit (1912), p. 54; Moffit (1915), p. 76	Au
51	Valdez Creek: Ross (1933b), p. 437, 444-453; Tuck (1938), p. 122-127	Au, Mz(?)
52	Rusty Creek: Moffit (1912), p. 64-65	Au
53	White Creek: Ross (1933b), p. 453-454; Tuck (1938), p. 128-129	Cu, Au, Pb
54	Lucky Gulch: Ross (1933b), p. 454-455; Tuck (1938), p. 129	Au

Placer deposits not shown on map because occurrences could not be located closely enough to plot:

<u>Name and principal reference</u>	<u>Commodity</u> <u>1/</u> , <u>2/</u>
Butte Creek: Moffit (1915), p. 76	Au
Gold Run: Smith (1933), p. 41	Au
Grizzly Creek: Smith (1938), p. 56	Au
Trixy Creek: Smith (1939), p. 55	Au

1/ Symbols - Cu, copper; Au, gold; Pb, lead; Mz, monazite.

2/ Gold has been produced from most of the listed placers.

REFERENCES

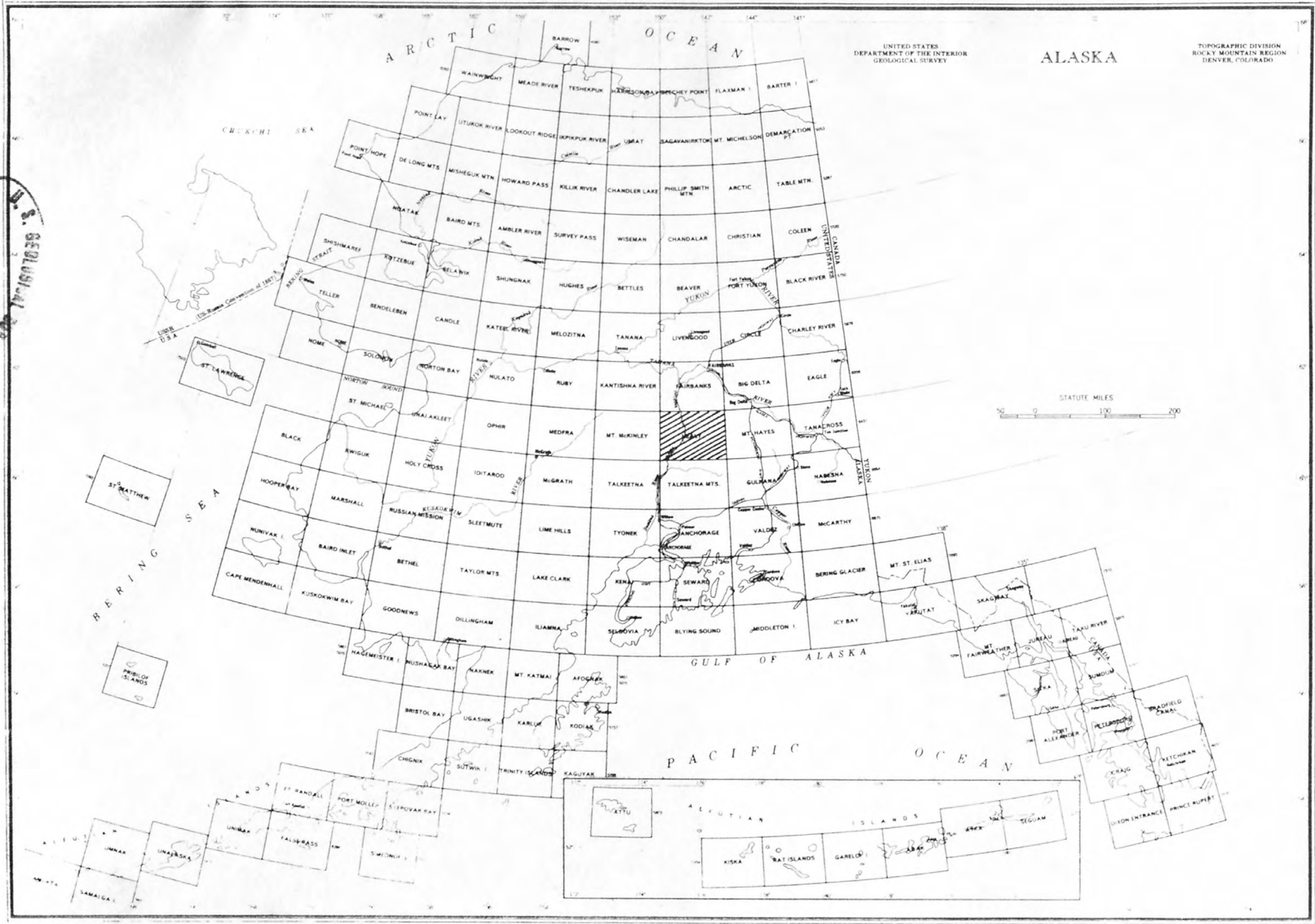
- Capps, S. R., 1912, The Bonnifield region, Alaska: U.S. Geol. Survey Bull. 501, 64 p.
- _____, 1919, Mineral resources of the upper Chulitna region: U.S. Geol. Survey Bull. 692, p. 207-232.
- Ebbley, Norman, Jr., and Wright, W. S., 1948, Antimony deposits in Alaska: U.S. Bur. Mines Rept. Inv. 4173, 41 p.
- Joesting, H. R., 1942, Strategic mineral occurrences in interior Alaska: Alaska Dept. Mines Pamph. 1, 46 p.
- _____, 1943, Supplement to Pamphlet No. 1 - Strategic mineral occurrences in interior Alaska: Alaska Dept. Mines Pamph. 2, 28 p.
- Kaufman, M. A., 1964, Geology and mineral deposits of the Denali-Maclaren River area, Alaska: Alaska Div. Mines and Minerals Geol. Rept. 4, 15 p.
- Maddren, A. G., 1918, Gold placers near the Nenana coal field: U.S. Geol. Survey Bull. 662, p. 363-402.
- Moffit, F. H., 1912, Headwater regions of Gulkana and Susitna Rivers, Alaska, with accounts of the Valdez Creek and Chistochina placer districts: U.S. Geol. Survey Bull. 498, 82 p.
- _____, 1915, The Broad Pass region, Alaska, with sections on Quaternary deposits, igneous rocks, and glaciation, by J. E. Pogue: U.S. Geol. Survey Bull. 608, 80 p.
- _____, 1933, Mining development in the Tatlanika and Totatlanika basins: U.S. Geol. Survey Bull. 836, p. 339-345.
- Ross, C. P., 1933a, Mineral deposits near the West Fork of the Chulitna River, Alaska: U.S. Geol. Survey Bull. 849-E, p. 289-333.
- _____, 1933b, The Valdez Creek mining district, Alaska: U.S. Geol. Survey Bull. 849-H, p. 425-468.
- Saunders, R. H., 1961, Susitna-Maclaren area: Alaska Div. Mines and Minerals Rept. for the year 1961, p. 37-40.
- Smith, P. S., 1933, Mineral industry of Alaska in 1931: U.S. Geol. Survey Bull. 844-A, p. 1-82.
- _____, 1938, Mineral industry of Alaska in 1936: U.S. Geol. Survey Bull. 897-A, p. 1-107.
- _____, 1939, Mineral industry of Alaska in 1937: U.S. Geol. Survey Bull. 910-A, p. 1-113.
- _____, 1942, Mineral industry of Alaska in 1940: U.S. Geol. Survey Bull. 933-A, p. 1-102.
- Tuck, Ralph, 1938, The Valdez Creek mining district in 1936: U.S. Geol. Survey Bull. 897-B, p. 109-131.

SOURCES OF DATA ON DISTRIBUTION OF GRANITIC ROCKS and POSITION OF THE DENALI FAULT

- Capps, S. R., 1940, Geology of the Alaska Railroad region: U.S. Geol. Survey Bull. 907, pl. 2, 3.
- Sahrhaftig, Clyde, unpub. compilation, 1:250,000.
- Sahrhaftig, Clyde, and Black, R. F., 1958, Quaternary and engineering geology in the central part of the Alaska Range: U.S. Geol. Survey Prof. Paper 293, pl. 1.

LIBRARY
U.S. GEOLOGICAL SURVEY

5



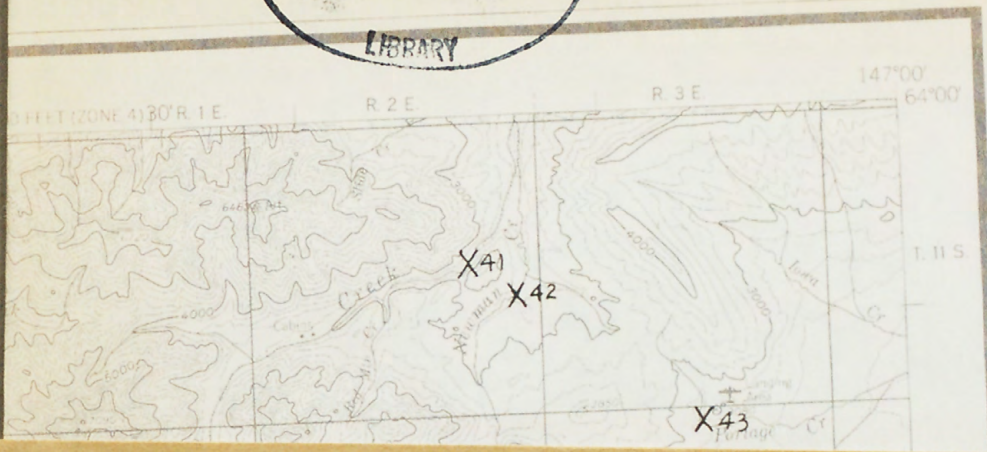
Index map showing location of the Healy quadrangle.

POCKET CONTAINS
TEXTS.

(200)
R290
no. 962



OPEN-FILE MAP



PLEASE REPLACE IN POCKET
IN BACK OF BOUND VOLUME



USGS LIBRARY - RESTON



3 1818 00082725 1