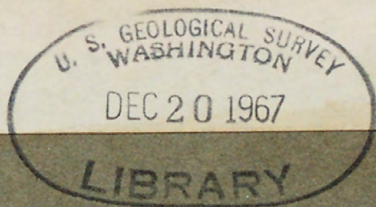


U. S. Geological Survey.

REPORTS-OPEN FILE SERIES, no. 966: 1967.



(200)
R29o
no. 966

206171



no.966, 1967

(200)
R290
no. 966

GEOLOGIC DIVISION
U.S. GEOLOGICAL SURVEY
Washington, D.C.
2242

U. S. Geological Survey.

Reports - open file, no. 966; 1967



accompanied

(200) Weld - Int. 2905

R290

no. 266

GEOLOGIC DIVISION
U.S. GEOLOGICAL SURVEY
Washington, D.C.
20242

For release DECEMBER 20, 1967

The U. S. Geological Survey is releasing in open files the following reports. Copies are available for consultation at the offices listed beneath last item. Material from which copies can be made at private expense is available in the Alaskan Branch, USGS, 345 Middlefield Rd., Menlo Park, Calif. 94025:

1. Metallic mineral resources map of the Chandalar quadrangle, Alaska, compiled by Edward H. Cobb. 5 p., 1 map, scale 1:250,000.
2. Metallic mineral resources map of the Wiseman quadrangle, Alaska, compiled by Edward H. Cobb. 6 p., 1 map, scale 1:250,000.
3. Metallic mineral resources map of the Healy quadrangle, Alaska, compiled by Edward H. Cobb. 5 p., 1 map, scale 1:250,000.
4. Metallic mineral resources map of the Mount Hayes quadrangle, Alaska, compiled by Edward H. Cobb. 8 p., 1 map, scale 1:250,000.
5. Metallic mineral resources map of the Bendeleben quadrangle, Alaska, compiled by Edward H. Cobb. 9 p., 1 map, scale 1:250,000.
6. Metallic mineral resources map of the Candle quadrangle, Alaska, compiled by Edward H. Cobb. 5 p., 1 map, scale 1:250,000.
7. Metallic mineral resources map of the Solomon quadrangle, Alaska, compiled by Edward H. Cobb. 10 p., 1 map, scale 1:250,000.
8. Metallic mineral resources map of the Seward and Blying Sound quadrangles, Alaska, compiled by Edward H. Cobb. 13 p., 1 map, scale 1:250,000.

USGS depositories: Libraries, 1033 GSA Bldg., Washington, D.C. 20242; Bldg. 25, Federal Center, Denver, Colo. 80225; 345 Middlefield Rd., Menlo Park, Calif. 94025; also at 108 Skyline Bldg., 508 2nd Ave., Anchorage, Alaska 99501; Brooks Bldg., College, Alaska 99701; 441 Federal Bldg., Juneau, Alaska 99801. Alaska Div. Mines and Minerals depositories: 3001 Porcupine Dr., Anchorage, Alaska 99504; University Ave., College, Alaska 99701; 509 Goldstein Bldg., Juneau, Alaska 99801.

(200)
R290
no. 966



UNITED STATES DEPARTMENT OF THE INTERIOR

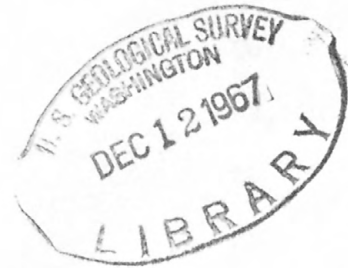
U.S. GEOLOGICAL SURVEY

*Reports - open file series,
no. 966*

METALLIC MINERAL RESOURCES MAP OF THE SOLOMON QUADRANGLE, ALASKA

Compiled by

Edward H. Cobb 1916 -
Washington



Open-file map

1967

This map is preliminary
and has not been edited or
reviewed for conformity with
Geological Survey standards
or nomenclature.

LODE DEPOSITS

<u>Number</u>	<u>Name and principal reference(s)</u>	<u>Commodity</u> ^{1/} , ^{2/}
1	Slate Creek: Chapin (1914b), p. 405-406	Au
2	Wheeler (Iron Creek): Mertie (1918a), p. 441	<u>Cu</u>
3	Wheeler (Kruzgamepa River): Cathcart (1922), p. 182-183, 210-212	<u>Pb</u> , <u>Ag</u> , Zn
4	Iron Creek: Smith (1909), p. 345; Cathcart (1922), p. 217	Cu, Au
5	Benson Creek: Cathcart (1922), p. 215 Wheeler (Sherrette Creek): Cathcart (1922), p. 212, 214-215	Cu <u>Cu</u> , Au, Ag
6	Sherrette Creek: Cathcart (1922), p. 215	Cu
7	Dome Creek, Left Fort: Cathcart (1922), p. 216	Cu
8	Mount Dixon: Smith (1908), p. 243	Cu
9	Spruce Creek: Smith (1908), p. 238, 243	Cu, Au
10	Post Creek: Smith (1907a), p. 155	Au
11	Brookins: Anderson (1947), p. 12	Sb
12	Camp Creek: Smith (1907a), p. 155	Au
13	Moonlight Divide: Smith (1908), p. 243	Cu
14	West Creek: Smith (1910), p. 93, 148	Au
15	Flynn: Cathcart (1922), p. 198, 204	Au
16	Big Hurrah Creek: Anderson (1947), p. 11 Quigley (Gray Eagle): Mertie (1918a), p. 439	Sb <u>Sb</u>
17	Silver: Anderson (1947), p. 43	W
18	Unnamed occurrence: Cathcart (1922), p. 199-200	Cu

^{1/} Symbols - Sb, antimony; Cu, copper; Au, gold; Pb, lead; Ag, silver; W, tungsten; Zn, zinc.

^{2/} Symbol underlined indicates recorded production.

<u>Number</u>	<u>Name and principal reference(s)</u>	<u>Commodity</u> <u>1/</u> , <u>2/</u>
19	Big Hurrah: Smith (1910), p. 143-147; Cathcart (1922), p. 173-174, 179, 198, 200-204; Coats (1944), p. 1-2, 4; Anderson (1947), p. 43	<u>Au</u> , Ag, W
20	Bunker Hill: Cathcart (1922), p. 188	Cu, Au
21	Daniels Creek (Bluff): Cathcart (1922), p. 186-197	Au, Hg
22	Koyana Creek: Cathcart (1922), p. 186-188	Au
23	Fish River: Mertie (1918a), p. 446	<u>Au</u> , <u>Pb</u> , <u>Hg</u>
24	Carson Creek: Smith and Eakin (1911), p. 134-135	Cu
<u>1/</u>	Symbols - Cu, copper; Au, gold; Pb, lead; Hg, mercury; Ag, silver; W, tungsten.	
<u>2/</u>	Symbol underlined indicates recorded production.	

PLACER DEPOSITS

<u>Number</u>	<u>Name and principal reference(s)</u>	<u>Commodity</u> <u>1/</u> , <u>2/</u>
25	Rock Creek: Smith (1909), p. 320 Slate Creek: Smith (1909), p. 320-321	Au Au
26	Willow Creek: Smith (1909), p. 321	Au
27	Canyon Creek: Smith (1909), p. 329-330	Au
28	El Patron Creek: Smith (1909), p. 330	Au
29	Rocky Creek: Smith (1907b), p. 163	Au
30	Rabbit Creek: Smith (1909), p. 329	Au
31	Bobs Creek: Smith (1909), p. 327-328	Au
32	Barney Creek: Smith (1909), p. 327	Au
33	Iron (Dome, Telegram) Creek: Smith (1909), p. 322-327; Smith (1941), p. 61	Au, Hg
<u>1/</u>	Symbols - Au, gold; Hg, mercury.	
<u>2/</u>	Gold has been produced from most of the listed placers.	

<u>Number</u>	<u>Name and principal reference(s)</u>	<u>Commodity</u> <u>1/</u> , <u>2/</u>
34	Discovery Creek: Smith (1909), p. 330	Au
35	Easy Creek: Smith (1909), p. 328, 340-341	Au
36	Benson Creek: Smith (1909), p. 328-329; Cathcart (1922), p. 210	Au
37	Dome Creek, Left Fork: Smith (1909), p. 330-331	Au
38	Chickamin Gulch: Smith (1909), p. 341-342	Au
39	Hardluck Creek: Smith (1909), p. 331 Hobo Gulch: Smith (1909), p. 331	Au Au
40	Shoal Creek: Smith (1909), p. 331	Au
41	Penny Creek: Smith (1909), p. 331	Au
42	Adventuress Creek: Smith (1909), p. 331	Au
43	Oversight Creek: Smith (1909), p. 331	Au
44	Dividend Creek: Smith (1909), p. 331	Au
45	Ready Bullion Creek: Smith (1909), p. 331	Au
46	Sherrette Creek: Smith (1909), p. 331-333	Cu, Au
47	Auburn Ravine: Smith (1910), p. 204-206	Au, Hg
48	American Creek: Smith (1910), p. 46-47, 204	Au
49	Allgold Creek: Smith (1909), p. 337	Au
50	Boulder Creek: Smith (1910), p. 198	Au
51	Canyon Creek: Smith (1910), p. 197-199	Au
52	Sunshine Creek: Smith (1910), p. 197, 199	Au
53	Casadepaga River: Smith (1910), p. 184-189; Smith (1932), p. 46-47	Au
54-57	Casadepaga River: Smith (1910), p. 184-189	Au
58	Goose Creek: Smith (1910), p. 194, 196-197	Au

1/ Symbols - Cu, copper; Au, gold; Hg, mercury.

2/ Gold has been produced from most of the listed placers.

<u>Number</u>	<u>Name and principal referenc(s)</u>	<u>Commodity</u> <u>1/</u> , <u>2/</u>
59	Quartz Creek: Smith (1910), p. 194, 196-197	Au
60	Gold Moon Gulch: Smith (1910), p. 197	Au
61	Goose Creek: Smith (1910), p. 194-197	Au
62	Penelope Creek: Smith (1910), p. 193-194	Au
63	Lightning Creek: Smith (1910), p. 193	Au
64	Spruce Creek: Smith (1910), p. 193	Au
65	Thorp(e) Creek: Smith (1910), p. 192	Au
66	Dry Creek: Smith (1910), p. 193	Au
67	Dixon Creek: Smith (1910), p. 192	Au
68	Big Four Creek: Smith (1910), p. 191-192	Au
69	No Man Creek: Smith (1910), p. 191	Au
70	Dawson Creek: Smith (1910), p. 192	Au
71	Puckmummie Creek: Smith (1910), p. 190	Au
72-73	Banner Creek: Brooks (1901), p. 107, 109	Au
74	Wilson Creek: Smith (1909), p. 336-337	Au
75	Cahill Creek: Smith (1910), p. 202	Au
76	Lower Willow Creek: Smith (1910), p. 201-202	Au
77	Ridgeway Creek: Smith (1910), p. 202	Au
78	Casadepaga River: Smith (1910), p. 184-189; Chapin (1914a), p. 392; Smith (1936), p. 52	Au
79	Ruby Creek: Smith (1910), p. 199-201	Au
80	Moonlight Creek: Mertie (1918b), p. 455	Au
81	Casadepaga River: Smith (1910), p. 184-189; Smith (1939a), p. 69-70	Au

1/ Symbol - Au, gold.

2/ Gold has been produced from most of the listed placers.

<u>Number</u>	<u>Name and principal reference(s)</u>	<u>Commodity</u> ^{1/} , ^{2/}
82	Birch Creek: Collier, Hess, Smith, and Brooks (1908), p. 264	Au
83	Venetia Creek: Collier, Hess, Smith, and Brooks (1908), p. 221-222	Au
84	Pajara Creek: Alaska Dept. Mines (1946), p. 38	Au
85	Beaver Creek: Smith (1942), p. 56-57	Au
86	Mystery Creek: Smith (1910), p. 172-174 Problem Gulch (Creek): Smith (1910), p. 173, 175 Puzzle Gulch: Smith (1910), p. 173, 175	Au Au Au
87	West Creek: Smith (1910), p. 175-177	Cu, Au
88	Adams Creek: Smith (1910), p. 178	Au
89	Kasson Creek: Smith (1910), p. 177-178	Au
90	Shovel Creek: Smith (1910), p. 171-173	Au
91	Meddler Gulch: Smith (1910), p. 179-180	Au
92	Bear Gulch: Smith (1910), p. 179	Au
93	Sapphire Gulch: Smith (1910), p. 179	Au
94	Penny Creek: Smith (1910), p. 179	Au
95	Butte Creek: Smith (1910), p. 183 Butte Creek, South Fork: Smith (1910), p. 183	Au Au
96	Nugget Gulch (Creek): Smith (1910), p. 184	Au
97	Solomon River: Smith (1910), p. 169; Smith (1933), p. 47, 54	Au
98	Fox Creek: Smith (1910), p. 184	Au
99	Solomon River: Smith (1910), p. 168-169	Au
100	Big Hurrah Creek: Smith (1910), p. 180-182; Coats (1944), p. 3-4 Lion Creek: Collier, Hess, Smith, and Brooks (1908), p. 232	Au, W Au

^{1/} Symbols - Cu, copper; Au, gold; W, tungsten.

^{2/} Gold has been produced from most of the listed placers.

<u>Number</u>	<u>Name and principal reference(s)</u>	<u>Commodity</u> <u>1/</u> , <u>2/</u>
101	Jerome Creek: Smith (1910), p. 171 Moran Gulch: Smith (1910), p. 161 Quartz Creek: Smith (1910), p. 180 Solomon River: Smith (1910), p. 155-168; Smith (1942), p. 62; Coats (1944), p. 4	Au Au Au Au, W
102	Rabbit Creek: Smith (1910), p. 212-213	Au
103	Rock Creek: Smith (1910), p. 170-171	Au
104	Manila Creek: Smith (1910), p. 170	Au
105	Spruce Creek: Smith (1910), p. 203-204; Smith (1939a), p. 69-70	Au
106	California Creek: Smith (1942), p. 61-62	Au
107	Silverbow (Little Anvil) Creek: Collier, Hess, Smith, and Brooks (1908), p. 283, 293	Au
108	Ryan Creek: Collier, Hess, Smith, and Brooks (1908), p. 283, 293; Herreid (1965), p. 5	Au
109	Eldorado Creek: Cathcart (1922), p. 196; Herreid (1965), p. 5-6	Au, Hg
110	Daniels Creek: Collier, Hess, Smith, and Brooks (1908), p. 283-293; Cathcart (1922), p. 196	Au, Hg, W
111	Swede Creek (Gulch): Herreid (1965), p. 5, 8	Au, Hg
112	Koyana Creek: Collier, Hess, Smith, and Brooks (1908), p. 283, 289; Cathcart (1922), p. 185; Herreid (1965), p. 5	Au, Hg
113	Fox River: Smith and Eakin (1911), p. 117 I.X.L. Gulch: Collier, Hess, Smith, and Brooks (1908), p. 237-238	Au Au
114	Elkhorn Creek: Collier, Hess, Smith, and Brooks (1908), p. 256-257	Au
115	Camp Creek: Collier, Hess, Smith, and Brooks (1908), p. 256 Niukluk River: Collier, Hess, Smith, and Brooks (1908), p. 236, 238-239, 263	Au Au

1/ Symbols - Au, gold; Hg, mercury; W, tungsten.

2/ Gold has been produced from most of the listed placers.

<u>Number</u>	<u>Name and principal reference(s)</u>	<u>Commodity</u> <u>1/</u> , <u>2/</u>
116	Goldbottom Creek: Collier, Hess, Smith, and Brooks (1908), p. 254-255; Smith and Eakin (1911), p. 117, 222 Warm Creek: Collier, Hess, Smith, and Brooks (1908), p. 256	Au, W Au
117	Warm Creek: Collier, Hess, Smith, and Brooks (1908), p. 254-256	Au, W
118	Richter Creek: Collier, Hess, Smith, and Brooks (1908), p. 263	Au
119	Sweetcake Creek: Collier, Hess, Smith, and Brooks (1908), p. 250-251	Au
120	Dutch Creek: Smith and Eakin (1911), p. 120 Ophir Creek: Smith and Eakin (1911), p. 117-121	Au Au
121-122	Niukluk River: Collier, Hess, Smith, and Brooks (1908), p. 236, 238-239	Au
123	Basin Creek: Smith and Eakin (1911), p. 118; Smith (1930), p. 41 Benson Gulch: Smith (1932), p. 46 Melsing Creek: Collier, Hess, Smith, and Brooks (1908), p. 240-242	Au Au Au
124	Mud Creek: Collier, Hess, Smith, and Brooks (1908), p. 240 Mystery Creek: Collier, Hess, Smith, and Brooks (1908), p. 236, 240	Au Au
125	Aggie Creek: Smith (1939b), p. 67-68 Rock Creek: Smith (1929), p. 26	Au Au
126	Clear Creek: West (1953), p. 6-7	FM, RE, Sn, W
127	Kwiniuk River: West (1953), p. 6	Cu, RE, W
128	Golovnin Bay: West (1953), p. 4	FM, RE, W

1/ Symbols - Cu, copper; FM, fissionable materials (other than monazite); Au, gold; RE, mineral (other than monazite) that contains rare-earth element(s); Sn, tin; W, tungsten.

2/ Gold has been produced from most of the listed placers.

Placer deposits not shown on map because occurrences could not be located closely enough to plot:

Name and principal reference

Commodity 1/, 2/

Coca Cola Creek: Smith (1934), p. 51

Au

Rapid Creek: Smith (1907b), p. 163

Au

Tubutulik River: Mendenhall (1901), p. 212

Au

1/ Symbol - Au, gold.

2/ Gold has been produced from most of the listed placers.

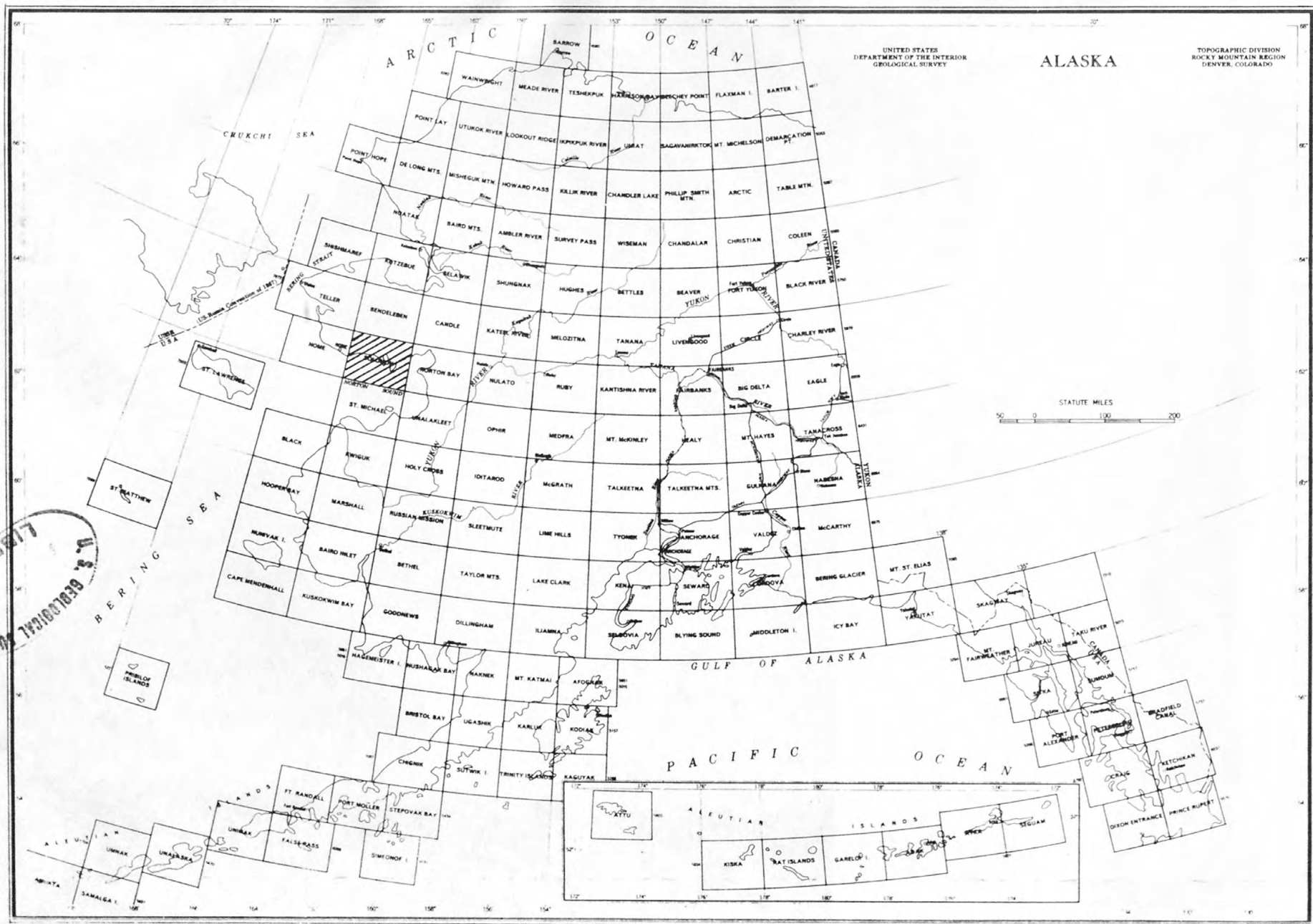
REFERENCES

- Alaska Dept. Mines, 1946, Rept. Commissioner Mines, biennium ended Dec. 31, 1946, 50 p.
- Anderson, Eskil, 1947, Mineral occurrences other than gold deposits in northwestern Alaska: Alaska Dept. Mines Pamph. 5-R, 48 p.
- Brooks, A. H., 1901, A reconnaissance of the Cape Nome and adjacent gold fields of Seward Peninsula, Alaska, in 1900: U.S. Geol. Survey Spec. Pub., p. 1-180.
- Cathcart, S. H., 1922, Metalliferous lodes in southern Seward Peninsula: U.S. Geol. Survey Bull. 722, p. 163-261.
- Chapin, Theodore, 1914a, Placer mining on Seward Peninsula: U.S. Geol. Survey Bull. 592, p. 385-395.
- _____, 1914b, Lode developments on Seward Peninsula: U.S. Geol. Survey Bull. 592, p. 397-407.
- Coats, R. R., 1944, Occurrence of scheelite in the Solomon district, Seward Peninsula, Alaska: U.S. Geol. Survey open-file rept., 4 p.
- Collier, A. J., Hess, F. L., Smith, P. S., and Brooks, A. H., 1908, The gold placers of parts of Seward Peninsula, Alaska, including the Nome, Council, Kougarok, Port Clarence, and Goodhope precincts: U.S. Geol. Survey Bull. 328, 343 p.
- Herreid, Gordon, 1965, Geology of the Bluff area, Solomon quadrangle, Seward Peninsula, Alaska: Alaska Div. Mines and Minerals Geol. Rept. 10, 21 p.
- Mendenhall, W. C., 1901, A reconnaissance in the Norton Bay region, Alaska, in 1900: U.S. Geol. Survey Spec. Pub., p. 181-222.
- Mertie, J. B., Jr., 1918a, Lode mining and prospecting on Seward Peninsula: U.S. Geol. Survey Bull. 662, p. 425-449.
- _____, 1918b, Placer mining on Seward Peninsula: U.S. Geol. Survey Bull. 662, p. 451-458.
- Smith, P. S., 1907a, Gold fields of the Solomon and Niukluk river basins: U.S. Geol. Survey Bull. 314, p. 146-156.
- _____, 1907b, Geology and mineral resources of Iron Creek: U.S. Geol. Survey Bull. 314, p. 157-163.
- _____, 1908, Investigations of the mineral deposits of Seward Peninsula: U.S. Geol. Survey Bull. 345, p. 206-250.
- _____, 1909, The Iron Creek region: U.S. Geol. Survey Bull. 379, p. 302-354.
- _____, 1910, Geology and mineral resources of the Solomon and Casadepaga quadrangles, Seward Peninsula, Alaska: U.S. Geol. Survey Bull. 433, 234 p.
- _____, 1929, Mineral industry of Alaska in 1926: U.S. Geol. Survey Bull. 797, p. 1-50.

- Smith, P. S., 1930, Mineral industry of Alaska in 1927: U.S. Geol. Survey Bull. 813, p. 1-72.
- _____, 1932, Mineral industry of Alaska in 1929: U.S. Geol. Survey Bull. 824, p. 1-81.
- _____, 1933, Mineral industry of Alaska in 1930: U.S. Geol. Survey Bull. 836, p. 1-83.
- _____, 1934, Mineral industry of Alaska in 1933: U.S. Geol. Survey Bull. 864-A, p. 1-94.
- _____, 1936, Mineral industry of Alaska in 1934: U.S. Geol. Survey Bull. 868-A, p. 1-91.
- _____, 1939a, Mineral industry of Alaska in 1937: U.S. Geol. Survey Bull. 910-A, p. 1-113.
- _____, 1939b, Mineral industry of Alaska in 1938: U.S. Geol. Survey Bull. 917-A, p. 1-113.
- _____, 1941, Mineral industry of Alaska in 1939: U.S. Geol. Survey Bull. 926-A, p. 1-106.
- _____, 1942, Mineral industry of Alaska in 1940: U.S. Geol. Survey Bull. 933-A, p. 1-102.
- Smith, P. S., and Eakin, H. M., 1911, A geologic reconnaissance in southeastern Seward Peninsula and the Norton Bay-Nulato region, Alaska: U.S. Geol. Survey Bull. 449, 146 p.
- West, W. S., 1953, Reconnaissance for radioactive deposits in the Darby Mountains, Seward Peninsula, Alaska, 1948: U.S. Geol. Survey Circ. 300, 7 p.

SOURCE OF DATA ON DISTRIBUTION OF GRANITIC ROCKS

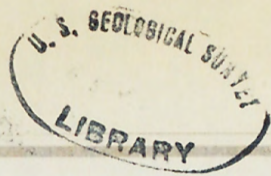
Hopkins, D. M., unpublished compilation, 1:500,000.



Index map showing location of the Solomon quadrangle.

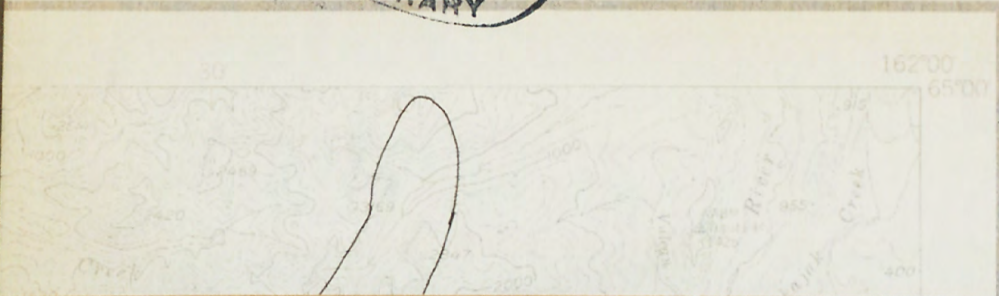
POCKET CONTAINS
A / ITEMS.

(200)
R290
no. 966



OPEN-FILE MAP

PLEASE REPLAC
IN BACK OF BO



KAROLTON KLASSE® — 7½ x 10½
KAROLTON ENVELOPE DIVISION
KIMBERLY CLARK CORPORATION
WEST CARROLLTON, OHIO

USGS LIBRARY - RESTON



3 1818 00082729 3