

INDUCTION ELECTRICAL LOG

COMPANY U.S. CORPS OF ENGINEERS	
WELL DONA ANA RANGE CAMP WELL NO. 2	
FIELD FORT BLISS	Other Services:
COUNTY DONA ANA STATE NEW MEXICO	MICR)
Location	
Sec. 11 Twp. 25S Rge. 4E	
Permanent Datum: G.L. Elev. 4102'	Elev. K.B. 4109.3'
Log Measured From: K.B. 7.3 Ft. Above Perm. Datum	D.F. 4108'
Drilling Measured From: SAME	G.L. 4102'
Date: 8/19/66	
Run No. ONE	
Depth-Driller 807'	
Depth-Logger 806'	
Btn. Log Inter. 805'	
Top Log Inter. 50'	
Casing-Driller	
Casing-Logger	
Bit Size 7 7/8"	
Type Fluid in Hole GEL CMC	
Dens. Visc. 8.9 65	
pH Fluid Loss 7.5 5.5ml	ml ml ml
Source of Sample CIRC	
R _s @ Meas. Temp. 1.4 @ 90 °F	@ °F @ °F @ °F @ °F
R _{at} @ Meas. Temp. 1.25 @ 90 °F	@ °F @ °F @ °F @ °F
R _{ac} @ Meas. Temp. 1.62 @ 90 °F	@ °F @ °F @ °F @ °F
Source: Ref. Rec. C I C	
R _{at} @ BHT 1.41 @ 90 °F	@ °F @ °F @ °F @ °F
Time Since Circ.	
Max. Rec. Temp. 90 °F	
Equip. Location 8.7 IABL	
Recorded By DAVIS	
Witnessed By MR. DOTY	

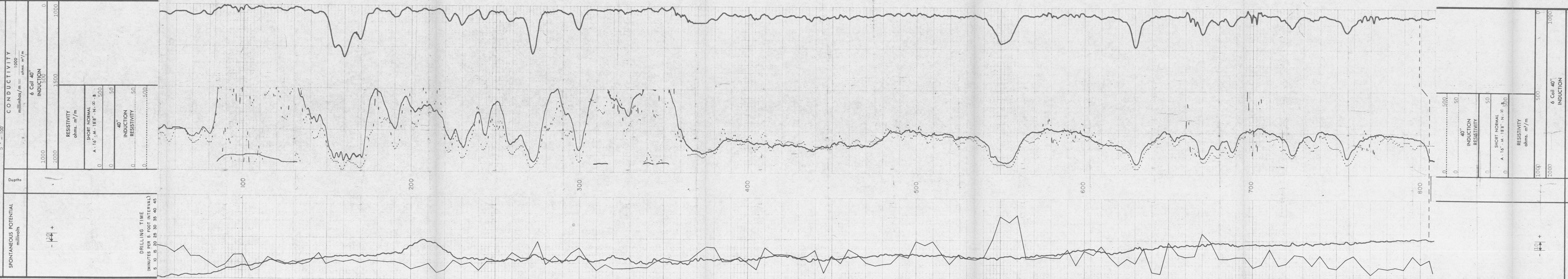


Figure 2 --- Induction electrical and drilling-time logs of Dona Ana Range Camp Well No. 2

COMPANY U.S. CORPS OF ENGINEERS	Rn 1.4 @ 90 of E Log FR 805'
WELL DONA ANA RANGE CAMP PROD. #2	Rat 1.25 @ 90 of E Log TD 806'
FIELD FORT BLISS STATE NEW MEXICO	Rac 1.62 @ 90 of DLR TD 807'
SEC DONA ANA	BHT 90 of Elev. KB 4109.3
	DE 4108'
	GL 4102'