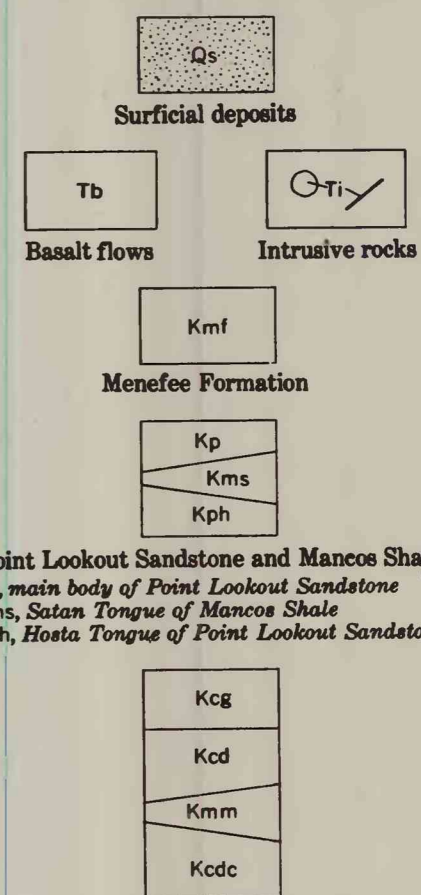


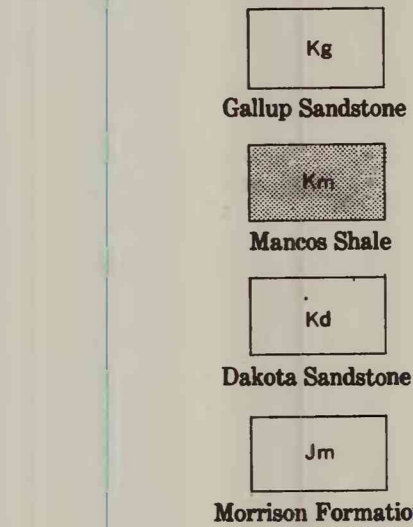


EXPLANATION

Symbols queried on map where identification uncertain

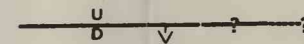


Crevasse Canyon Formation and Mancos Shale
Kcg, Gibson Coal Member of Crevasse Canyon Formation
Kcd, Dalton Sandstone Member of Crevasse Canyon Formation
Kmm, Malatto Tongue of Mancos Shale
Kdc, Dilco Coal Member of Crevasse Canyon Formation



Contact
Dashed where approximately located

Trace of resistant or conspicuous bed within a formation



Fault, showing dip
Dashed where approximately located; dotted where concealed; queried where probable. U, upthrown side; D, downthrown side

Anticline, showing crestline
Dashed where approximately located; queried where probable

Syncline, showing troughline
Dashed where approximately located; queried where probable

Linear feature
Geologic significance uncertain from photointerpretation

Strike and dip of beds
Based on field measurement

Strike and dip of beds
Computed by photogrammetric methods

Approximate strike and dip of beds
Based on photointerpretation

Inferred strike and dip of beds
Based on photointerpretation of areas where bedding is obscure

National forest boundary

Secondary road

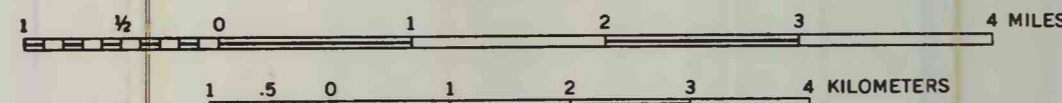
Spot elevation

CHACO CANYON 2 I-315 1960		CHACO CANYON 4 OPEN FILE 1967		CABEZON 3 I-317 1960	
GOAT MOUNTAIN 00-518 1965	AMBROSIA LAKE 00-519 1965	SAN LUCAS DAM 00-518 1965	EAST HALF GRANTS 1 OPEN FILE 1967	LAGUNA 2 OPEN FILE 1967	LAGUNA 1 OPEN FILE 1967
BLUE-WINTER 00-579 1967	DOS LOMAS 00-580 1967	SAN MATEO 00-517 1965	LAGUNA 3 OPEN FILE 1967	LAGUNA 4 OPEN FILE 1967	LAGUNA 5 OPEN FILE 1967
GRANTS 00-521 1967	GRANTS 4 OPEN FILE 1967	LAGUNA 6 OPEN FILE 1967	LAGUNA 7 OPEN FILE 1967	LAGUNA 8 OPEN FILE 1967	LAGUNA 9 OPEN FILE 1967
GRANTS SE 00-522 1967	SOUTH BUTTE 00-356 1964	MOQUINO 00-209 1963	ARCH MESA 00-211 1963	MESA GIARTE 00-212 1963	EAST HALF LAGUNA 4 OPEN FILE 1967

INDEX TO MAPS ISSUED BY THE U.S. GEOLOGICAL SURVEY, SHOWING SERIES DESIGNATION (GQ, GEOLOGIC QUADRANGLE; I, MISCELLANEOUS GEOLOGIC INVESTIGATIONS; OPEN FILE) AND DATE OF RELEASE

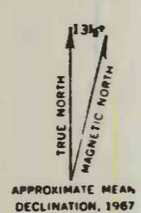
PHOTOGEOLOGIC MAP
OF THE
NE, NW, AND SE QUARTERS OF
LAGUNA 1 QUADRANGLE
SANDOVAL COUNTY, NEW MEXICO

By
R. J. Hackman
SCALE 1:62 500



Geologic and geographic data from U.S. Geol. Survey Bull. 860-B, 1936 U.S. Geol. Survey Misc. Geol. Inv. Map I-224, 1957
This map has been compiled mainly from photogeologic data and has not been checked in the field. Geologic photointerpretation from aerial photographs taken in May 1954. Mapped in 1958.

TERTIARY QUATERNARY
CRETACEOUS
JURASSIC



Base modified from U.S. Army Map Service Albuquerque, New Mexico, 1956
Roads are classified as follows: Secondary roads are traversable by four-wheel-drive vehicles and locally by two-wheel-drive vehicles
When other information is lacking roads are classified by their appearance on aerial photographs