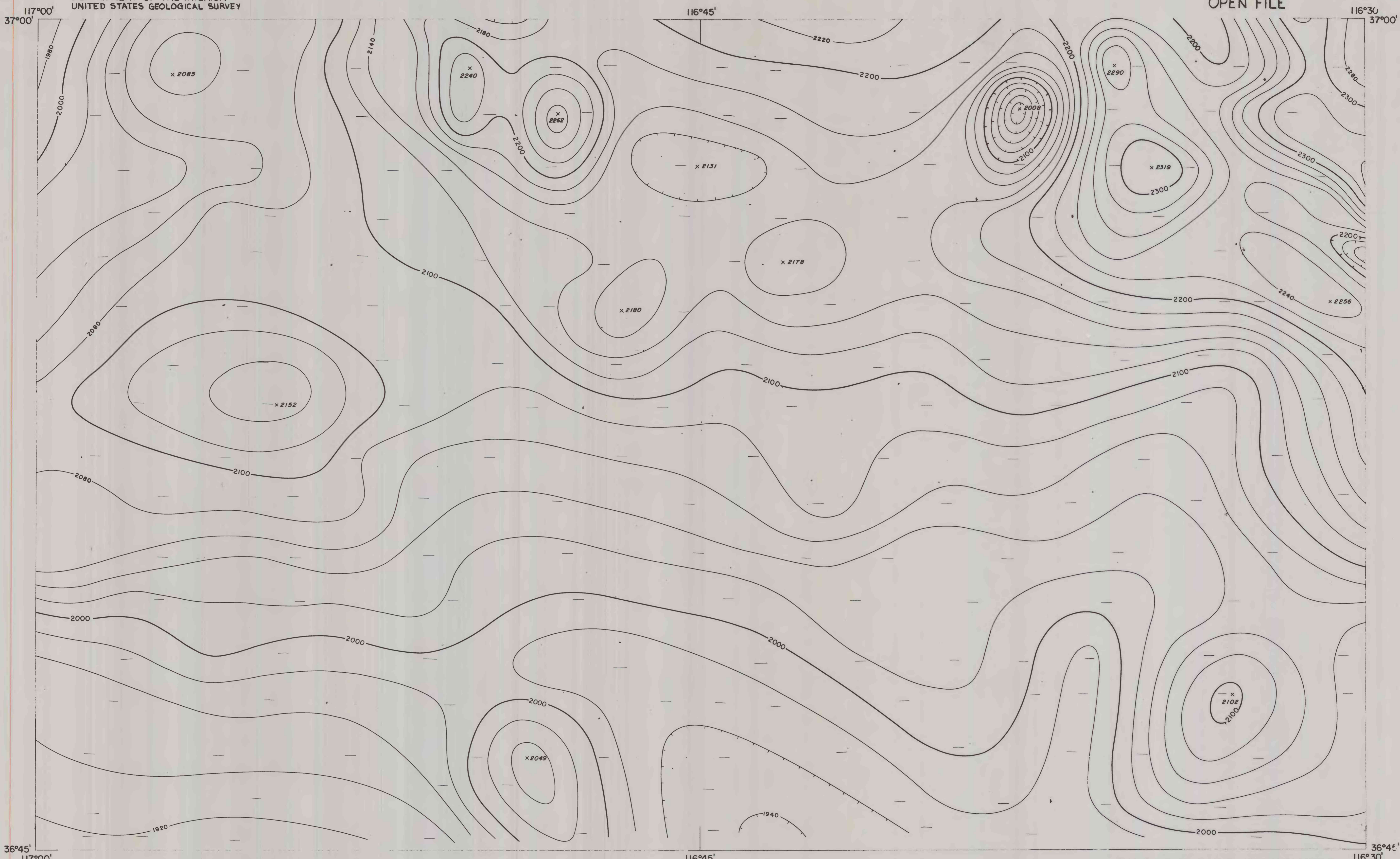


67-251

DEPARTMENT OF THE INTERIOR  
UNITED STATES GEOLOGICAL SURVEY

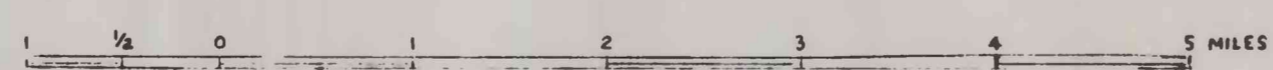
OPEN FILE



FLOWN AND COMPILED BY LOCKWOOD, KESSLER,  
AND BARTLETT, INC., 1967

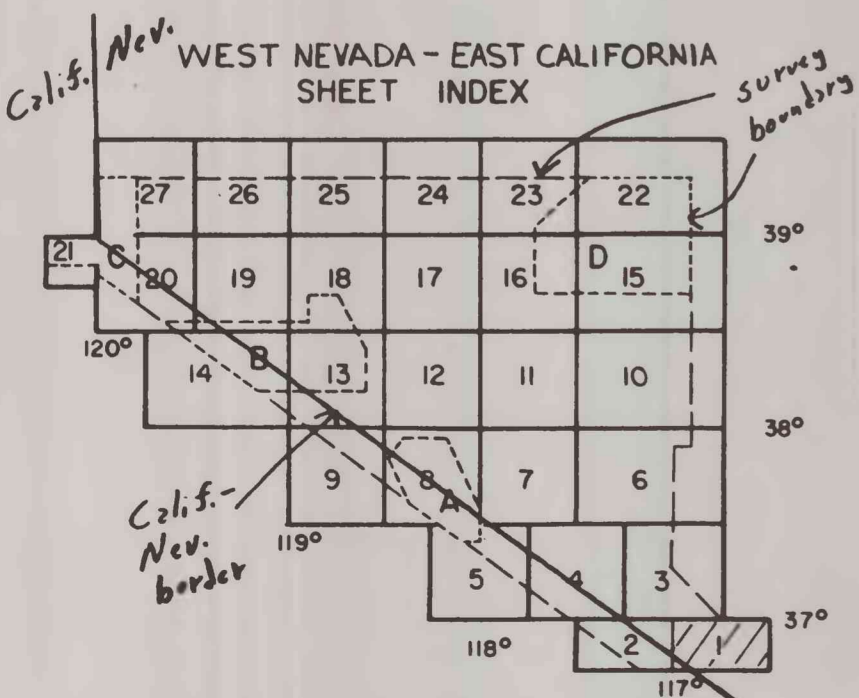
### AEROMAGNETIC MAP OF THE BULLFROG AND BARE MOUNTAIN QUADRANGLES, NEVADA - CALIFORNIA

- HORIZONTAL SCALE.....1: 62500
- CONTOUR INTERVAL.....20 GAMMA
- 100 GAMMA CONTOUR.....
- 20 GAMMA CONTOUR.....
- MAGNETIC LOW.....
- MAGNETIC MAXIMUM/MINIMUM.....±1527
- SURVEY ALTITUDE.....9000 FEET ASL
- FLIGHT LINE.....
- REGIONAL MAGNETIC GRADIENT NOT REMOVED
- TOTAL INTENSITY RELATIVE TO
- ARBITRARY DATUM



1967

WESTERN NEVADA  
SHEET NUMBER 1  
LKB 1967



SHEETS 1-5 NOW ON OPEN FILE  
AREAS A-D SURVEYED AT HIGHER  
THAN 9,000 FEET ASL

This map is preliminary  
and has not been edited  
or reviewed for conformity  
to Geological Survey  
standards.

U.S. GEOLOGICAL SURVEY  
Released to open files  
SEPT. 29, 1967