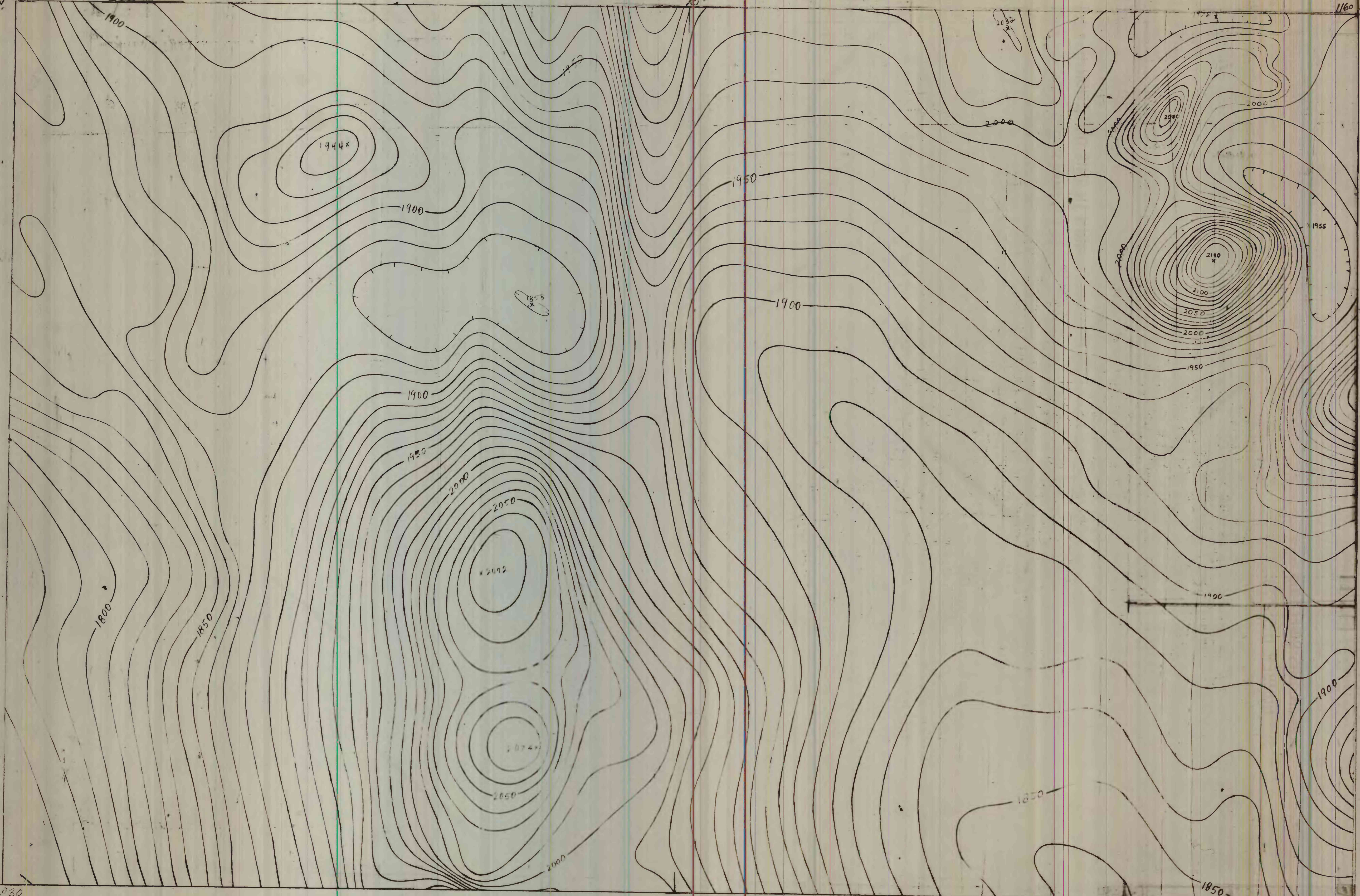
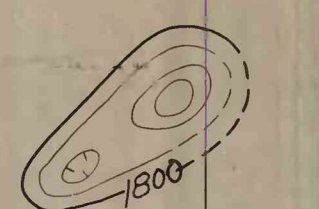


41000' 116°30'

116°00' 41000'



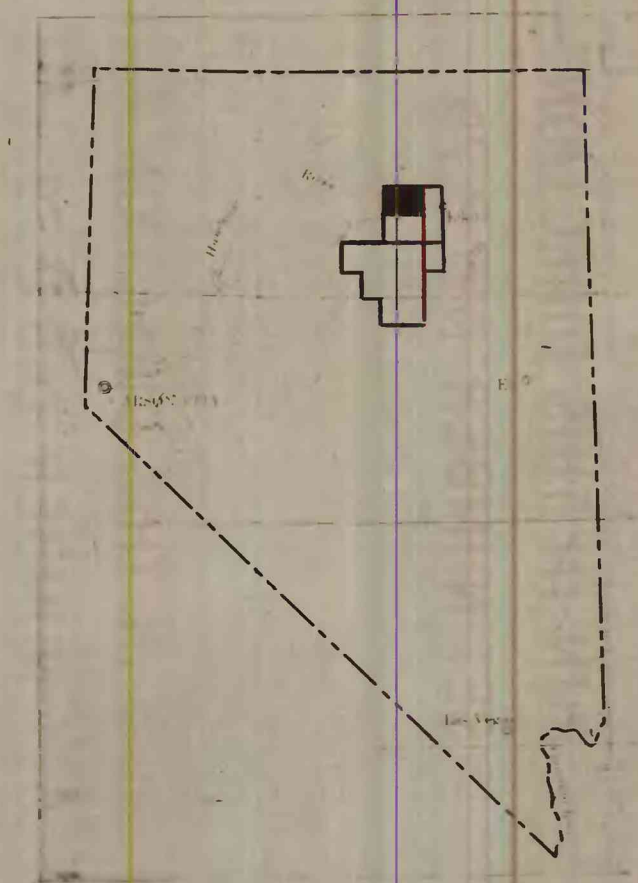
EXPLANATION



Magnetic contours showing total intensity magnetic field of the earth in gammas relative to arbitrary datum
 Dashed to indicate closed areas of lower magnetic intensity, dotted where data are incomplete
 Contour interval 50 and 50 g amms

Location of measured maximum or minimum intensity within closed high or closed low

Flight path
 Showing location and spacing of data



Showing location of this and adjoining Open file maps

This map is preliminary and has not been edited, or reviewed for conformity to Geological Survey standards.

U. S. GEOLOGICAL SURVEY
 Released to open files
 Aug. 3, 1967

AEROMAGNETIC MAP OF THE PALISADE 1 AND PALISADE 2 QUADRANGLES, EUREKA AND ELKO COUNTIES, NEVADA

Scale 1:62,500

Aeromagnetic survey flown at 9000 feet barometric elevation, 1966 by R.A. Snadden, Compiled by F.A. Petrafeso