

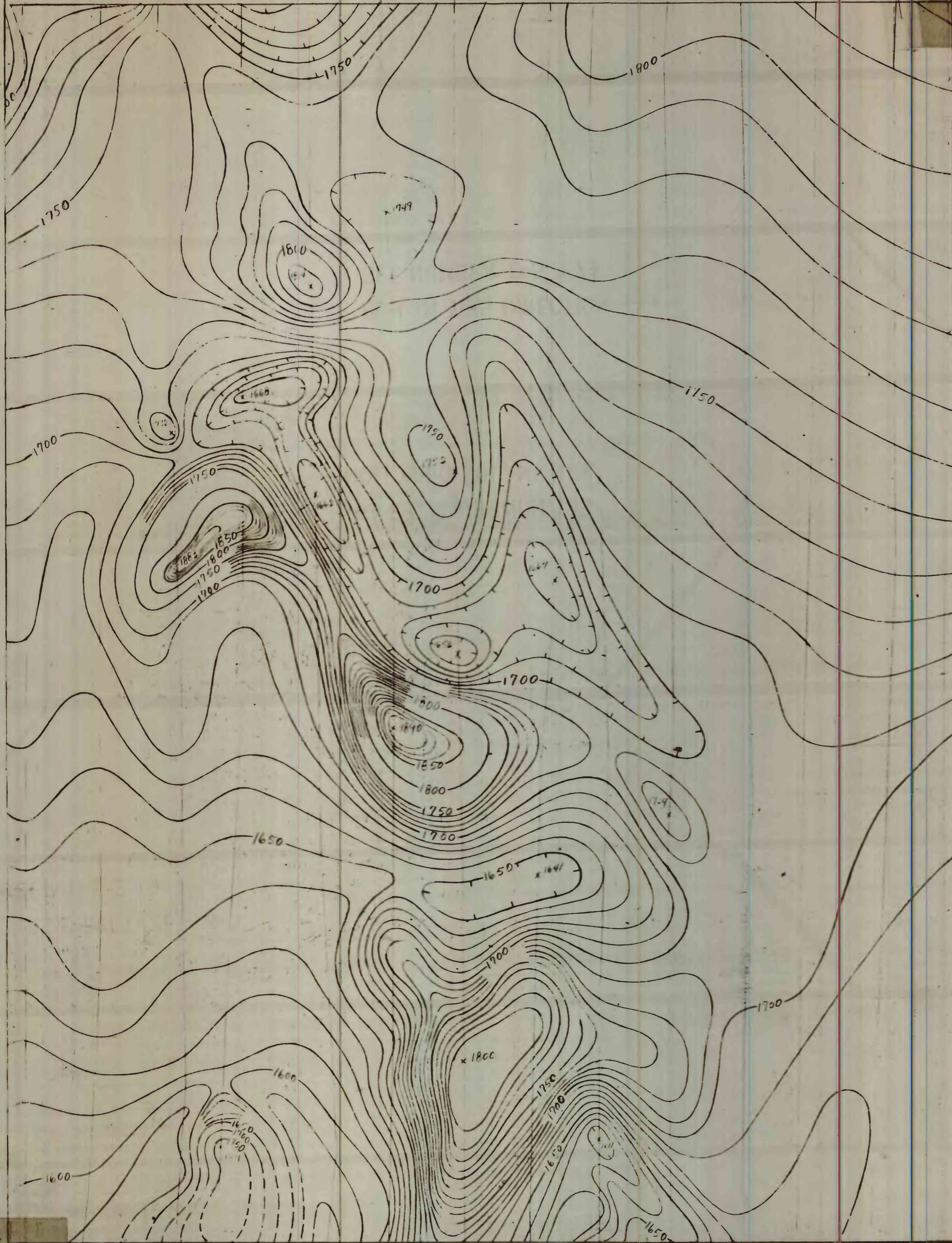
67-249

DEPARTMENT OF THE INTERIOR
UNITED STATES GEOLOGICAL SURVEY

OPEN FILE

40° 30'
116° 00'

115° 45'
40° 30'



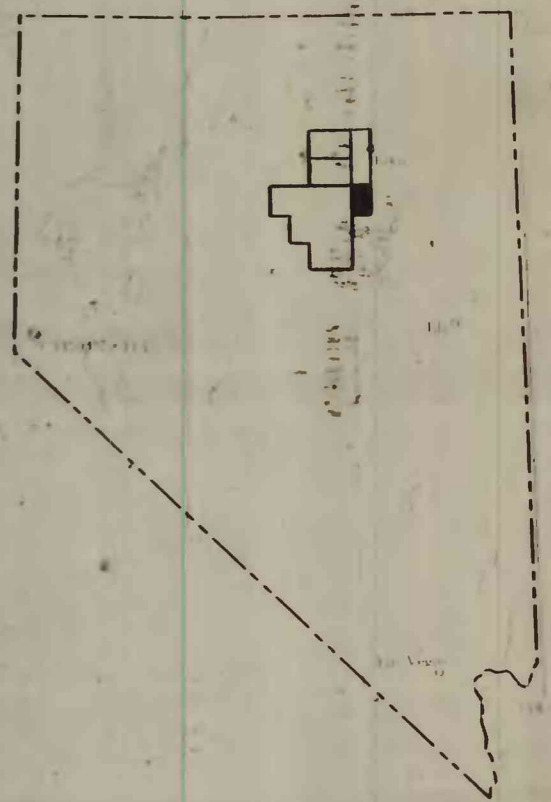
EXPLANATION



Magnetic contours showing total intensity magnetic field of the earth in gammas relative to arbitrary datum
 Hatched to indicate closed areas of lower magnetic intensity, dashed where data are incomplete
 Contour intervals 10 and 50 gammas

Location of measured maximum or minimum intensity within closed high or closed low

Flight path
 Showing location and spacing of data



Index map of Nevada
 Showing location of
 this and adjoining open
 file maps.

This map is preliminary
 and has not been edited
 or reviewed for conformity
 to Geological Survey
 standards.

U. S. GEOLOGICAL SURVEY

Released to open files

Aug 3, 1967

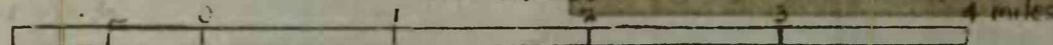
40° 15'
116° 00'

115° 45'
40° 15'

Aeromagnetic survey flown at 9000 feet
 barometric elevation, 1966, by R.A. Sneddon
 Compiled by F.A. Petrafeso

AEROMAGNETIC MAP OF THE ROBINSON MOUNTAIN QUADRANGLE, ELKO COUNTY, NEVADA

SCALE 1:62,500



1967