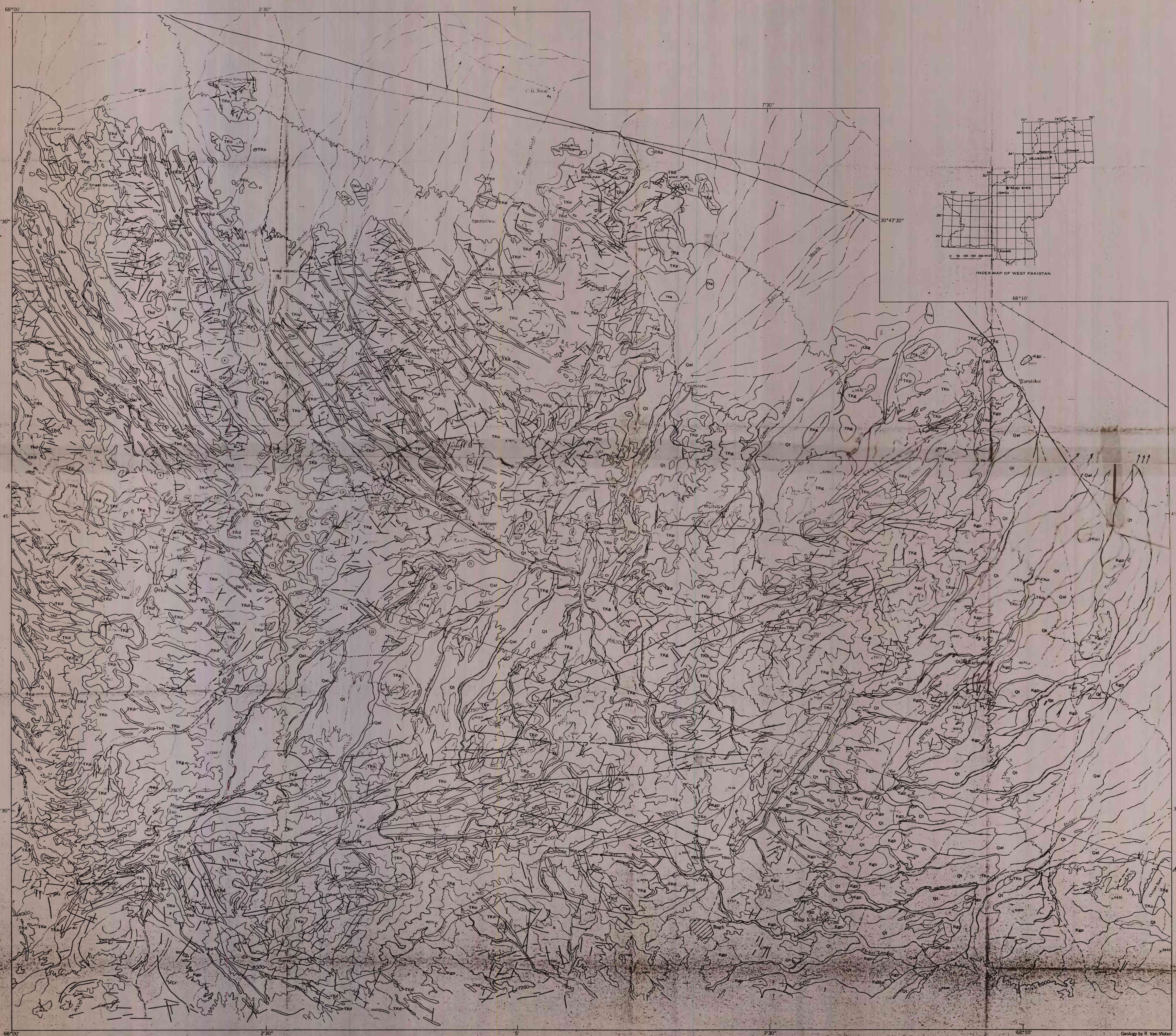


1200
Un 3 top
no. 41

67-264



EXPLANATION

SEDIMENTARY ROCKS

- Qal Alluvium
- Ql Terrace deposits
- Kgp Gora formation* and Park limestone equivalent, undivided

IGNEOUS ROCKS

- TKd Dolerite
- TKs Dikes and sills
- TKg Gabbroic rocks Includes diorite
- TKp Pyroxenite
- TKo Serpentinized olivine rocks, Dunite, chromite, and harzburgite

CONTACT

- Dashed where approximately located
- Fault or linear feature that may be geologically significant
- Dashed where approximately located

Trend lines

- Inclined
- Vertical
- Horizontal
- Overturned
- Dip shown
- Strike and dip of beds or igneous rock layer

Latitude for structural studies

- Number of stereonet

Showing trend of extension

- Miner workings
- Cr. rhinoceros, Mg. rhinoceros

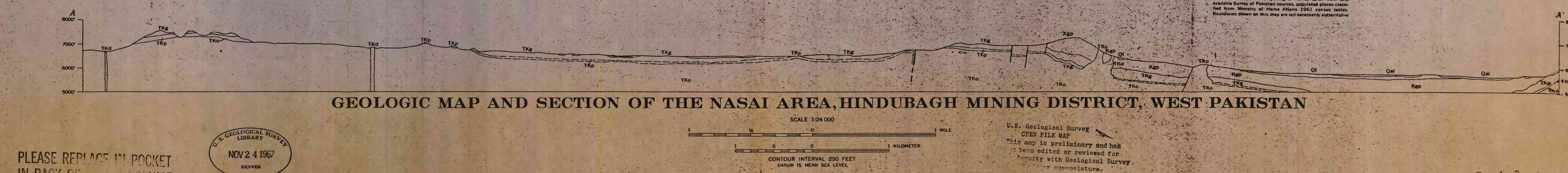
Exploratory pits

- Magmatite
- Serpentine

* Formal name used in publications - reports and whose status with respect to the nomenclature code of Pakistan is currently (1964) under examination; usage follows Geological Map of Pakistan.

Reference: Khan, N. M., Geological Map of Pakistan: Geological Survey of Pakistan, 1964.

GEOLOGIC MAP AND SECTION OF THE NASAI AREA, HINDUBAGH MINING DISTRICT, WEST PAKISTAN



PLEASE REPLACE IN POCKET
IN BACK OF BOOK VOLUME

U.S. GEOLOGICAL SURVEY
LIBRARY
NOV 24 1967
DENVER

U.S. Geological Survey
OPEN FILE MAP
This map is preliminary and has
not been edited or reviewed for
accuracy with Geological Survey
nomenclature.

Cento Tron... PK-41