

TOPOGRAPHIC MAP of SOUTHERN COULEE, MONO CO., CALIFORNIA
Prepared by the U.S. Geol. Survey, Branch of Astrogeology
For Manned Spacecraft Center, Houston, Texas NASA Contract T-25091 (G)

COMPILED BY: PHOTOGRAMMETRY UNIT OF
FIELD SURVEYING SECTION

SCALE: 1:5,000
CONTOUR INTERVAL: 20 FEET
DATE: SUMMER 1965

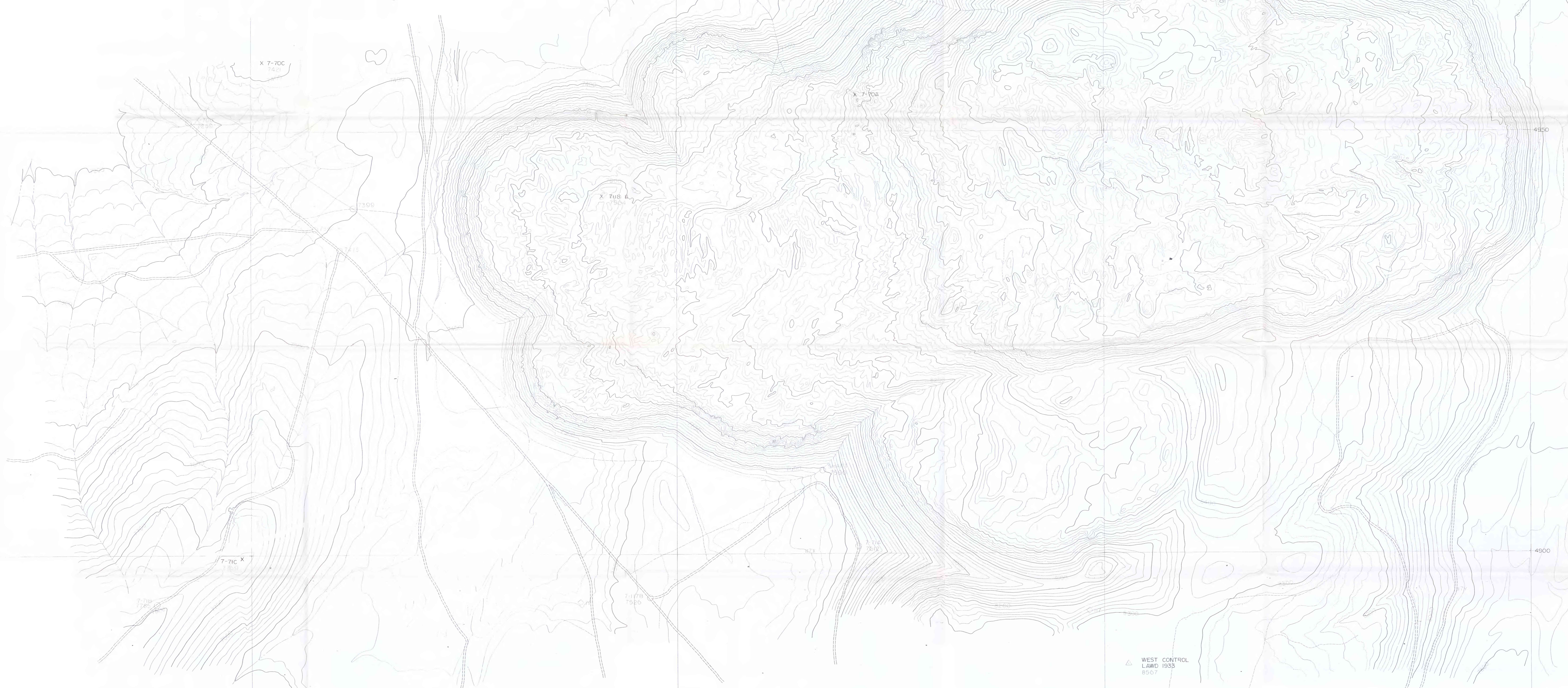
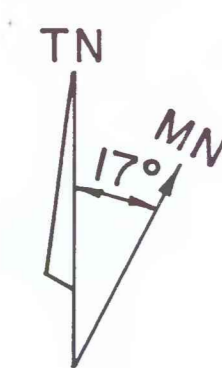


PLATE I