

(200)  
R290  
no. 945

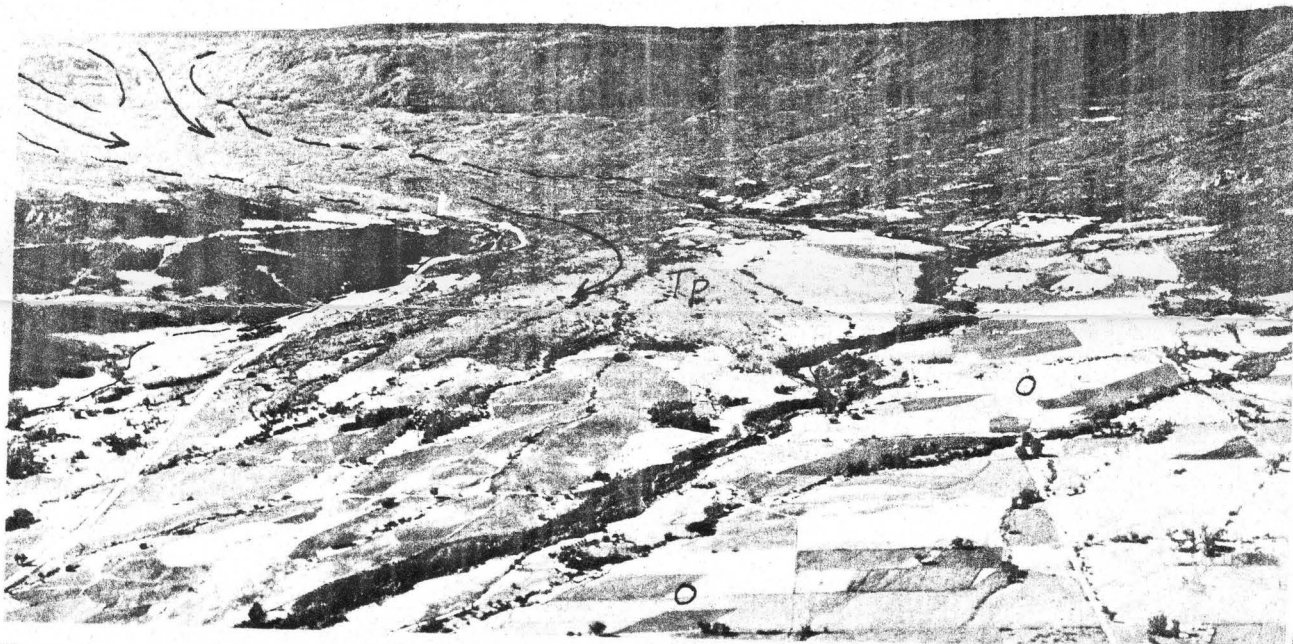
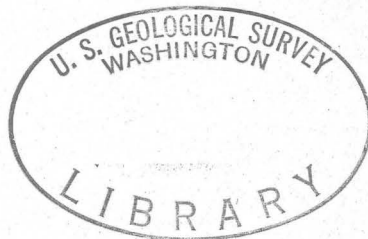


Figure <sup>15</sup>~~28~~.--Looking south over the till plain (Tp) in the Mesa Creek drainage.

Grand Mesa is on the skyline. Arrows show direction of ice movement as it flowed off the landslide bench into the Mesa Creek valley. Outwash (O) deposits are marginal to the till plain on the west.

PLEASE REPLACE IN POCKET  
IN BACK OF BOUND VOLUME