

(200)
R290
no. 945

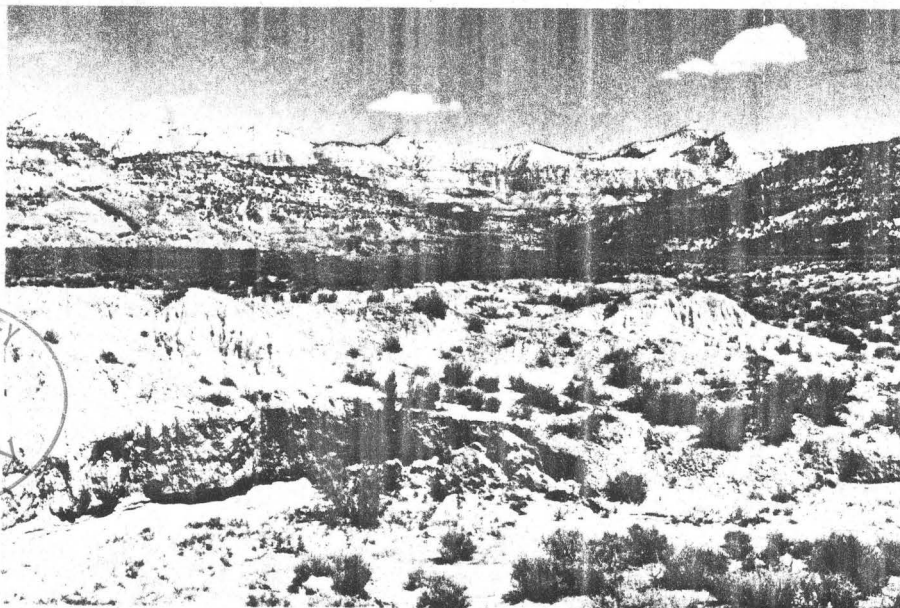
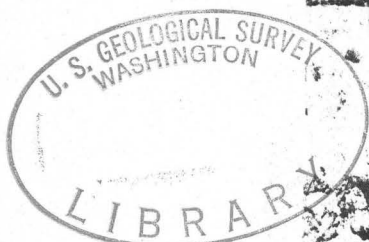


Figure 32²⁶.--View northeast from the DeBeque Cutoff Road across a fill of eolian and alluvial sand and silt. Recent gully in foreground is cut into the fill.

PLEASE REPLACE IN POCKET
IN BACK OF COVER VOLUME



Figure 37²⁷.--Talus creep(?) near divide between Leroux and Leon Creek drainages. Note disrupted soil at leading edge of talus field.