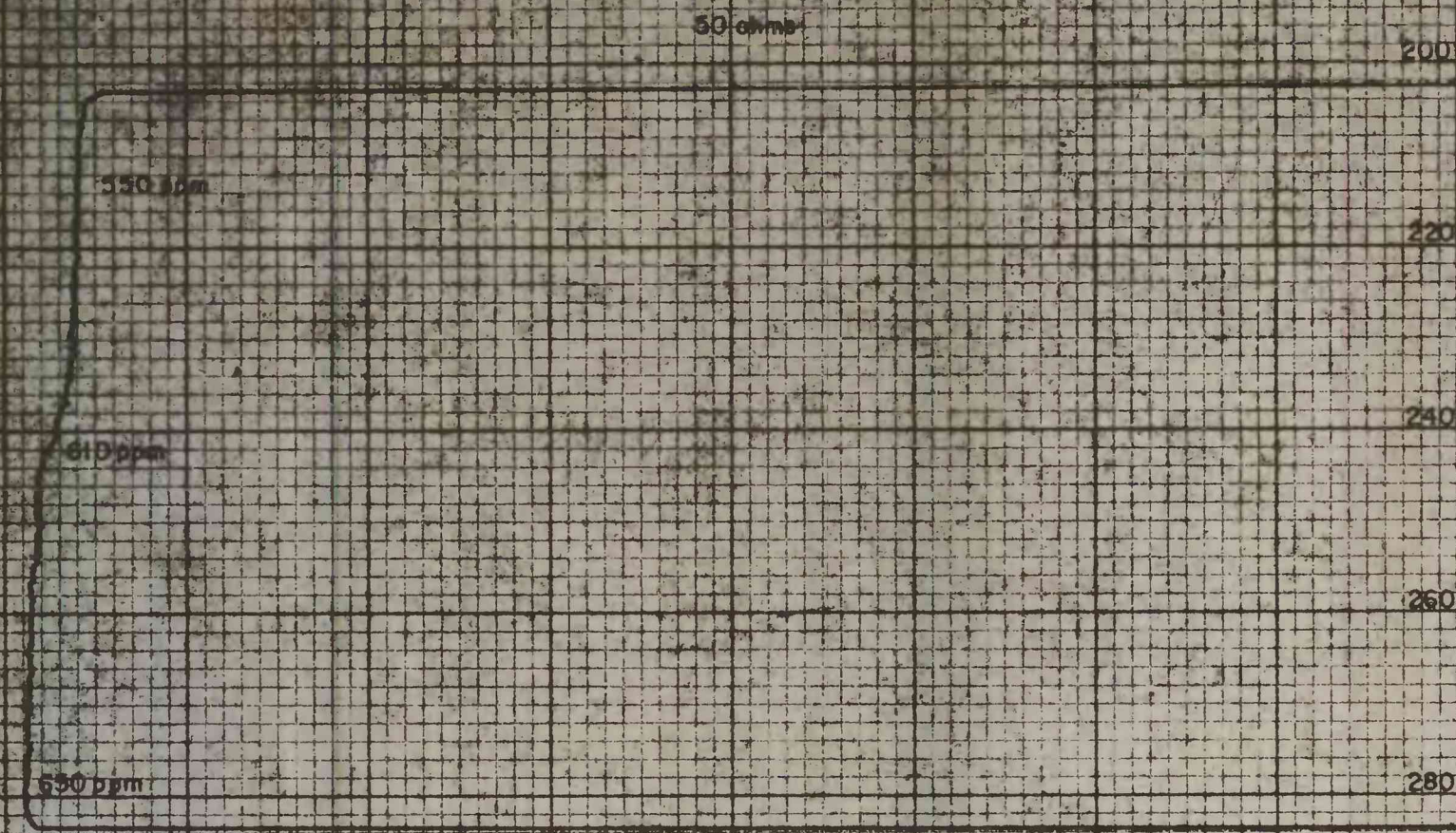


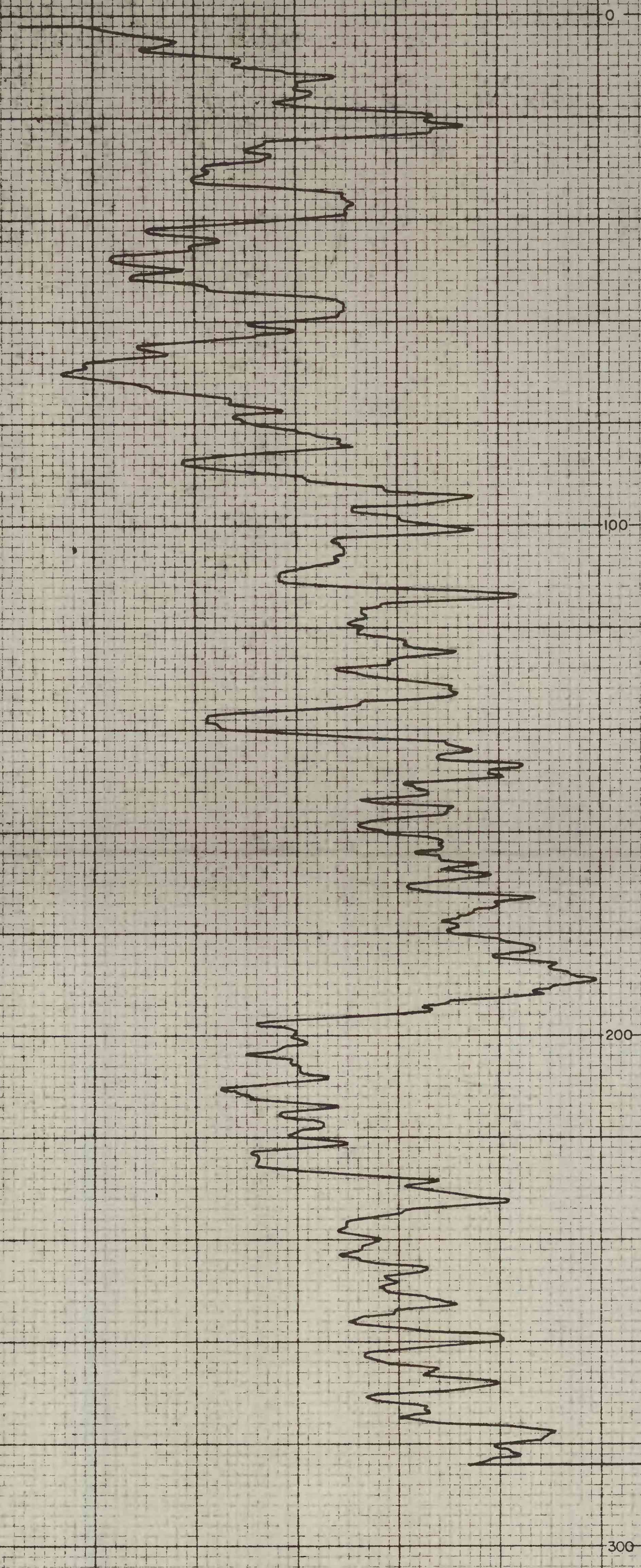
MURRAY WELL

FLUID CONDUCTIVITY LOG

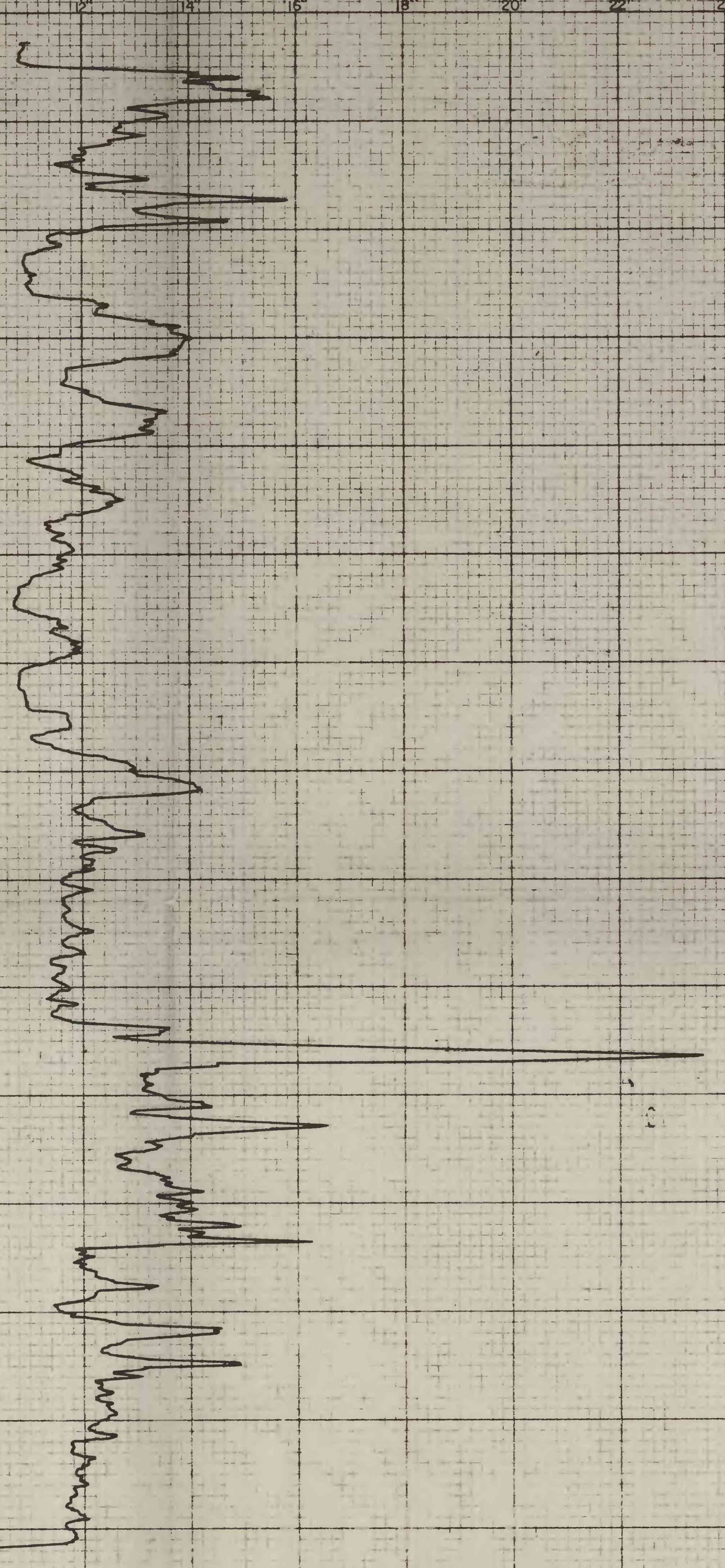


GAMMA LOG

RADIATION INTENSITY INCREASES →

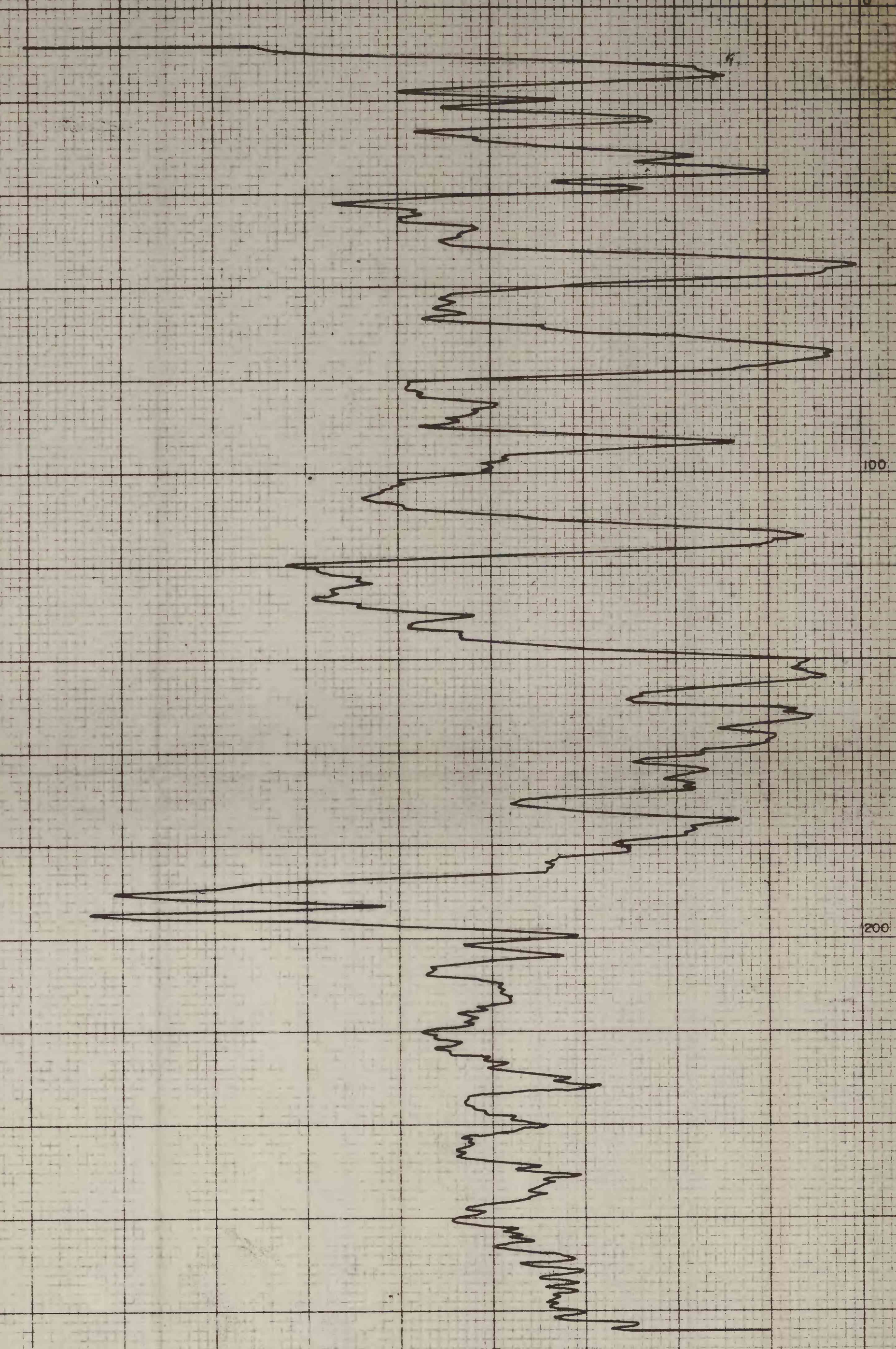


CALIPER LOG



NEUTRON LOG

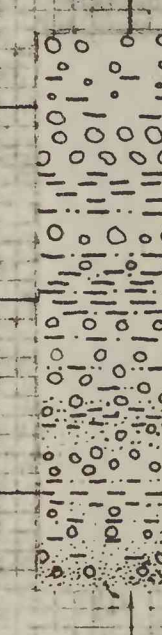
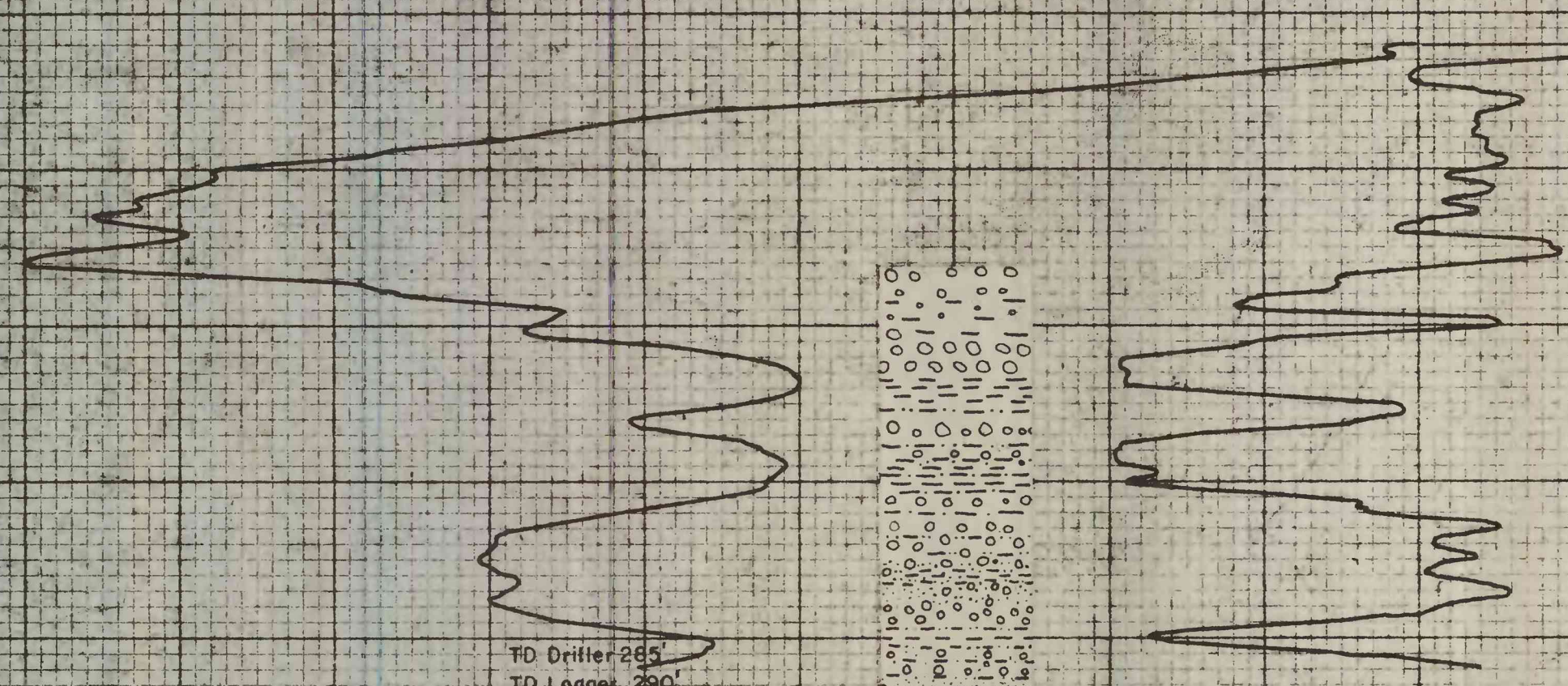
RADIATION INTENSITY INCREASES →



ELECTRIC LOG

SPONTANEOUS POTENTIAL
50 mV

RESISTANCE
10 ohms



GRAVEL
2mm to 35mm diameter
SAND
CLAY

LITHOLOGIC COLUMN INTERPRETED FROM CUTTING SAMPLES AND ELECTRIC LOG

Logged by Jim D. Hudson
U.S. Geological Survey
May 7, 1966

Figure 1.-- Logs of Murray well, White Sands Missile Range, New Mexico.

"PERFECT" CROSS SECTION
10 X 10 = ONE INCH
EUGENE DIETZGEN CO

ON 100% U.S.A.

"PERFECT" CROSS SECTION
10 X 10 = ONE INCH
EUGENE DIETZGEN CO