



MIPROLOG  
WITH SCALES  
FOR SURVEYING INSTRUMENTS  
SPECIALIZED WELL SURVEYING INSTRUMENTS  
HOUSTON, TEXAS

68-84

COUNTY DONA ANA		FIELD or LOCATION WATER WELL		WELL MAR WATER SUPPLY	
COMPANY WHITE SANDS MISSILE RANGE CORP OF ENGINEERS					
WELL MAR WATER SUPPLY					
FIELD WATER WELL					
COUNTY DONA ANA STATE NEW MEXICO					
LOCATION					
Sec. 17	Twp. 19S	Rge. 5E	Other Services:		
Permanent Datum: GL			Elev. KB		
Log Measured From: GL			DF		
Drilling Measured From: GL 4132			GL 4132		
Date: 9-21-63	Run No. ONE	Depth—Logger: 650	Bim. Log Interval: 64.9	Top Log Interval: 10	Casing—Driller: 12" @ 10'
Casing—Logger: 10 1/2"					
Type Fluid in Hole: AQUA GEL					
Dens. Visc.:	Fluid Lost:	pH:	ml:	ml:	ml:
Source of Sample:	R <sub>m</sub> @ Meas. Temp.:	R <sub>mf</sub> @ Meas. Temp.:	R <sub>mc</sub> @ Meas. Temp.:	R <sub>m</sub> @ BHT:	R <sub>mf</sub> @ BHT:
Source: R <sub>m</sub> R <sub>mf</sub> R <sub>mc</sub> :	R <sub>m</sub> @ BHT:	R <sub>mf</sub> @ BHT:	R <sub>mc</sub> @ BHT:	Time Since Circ.:	
Max. Rec. Temp.:		Time Since Circ.:		1 HOUR	
Equip. Location:		3101 HUBBBS		Recorded by: WILSON	
Witnessed by: DOTY					

REMARKS: MUD LOG: RM 9.5

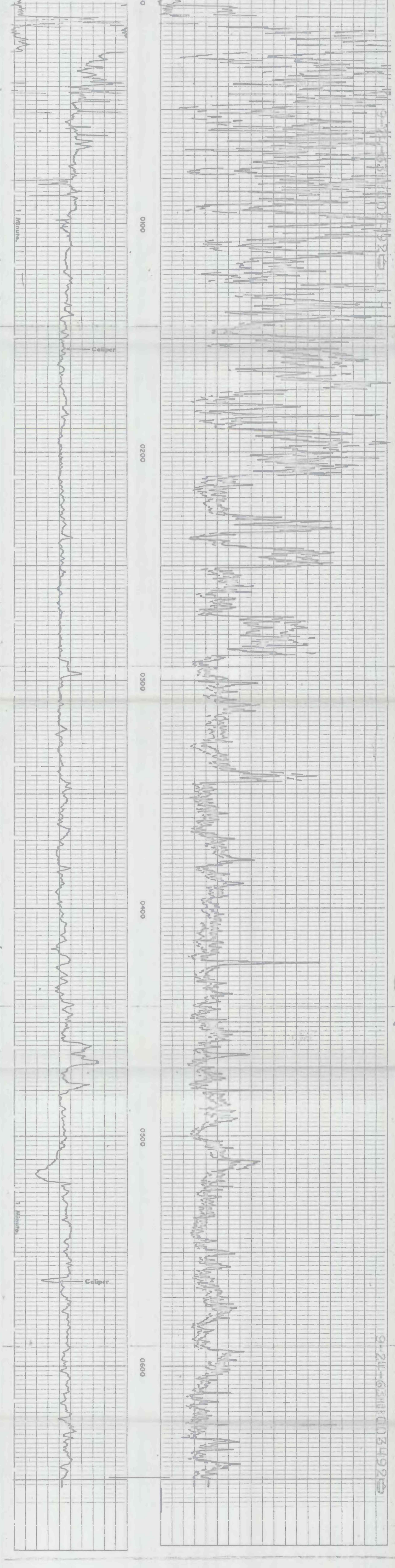
Changes in Mud Type or Additional Samples	Type Log	Depth	Scale Changes	Scale Up Hole	Scale Down Hole
Date Sample No.					
Depth—Driller					
Type Fluid in Hole					
Dens. Visc.:					
ph Fluid Loss					
Source of Sample					
R <sub>m</sub> @ Meas. Temp.					
R <sub>mf</sub> @ Meas. Temp.					
R <sub>mc</sub> @ Meas. Temp.					
Source: R <sub>m</sub> R <sub>mf</sub> R <sub>mc</sub> :					
R <sub>m</sub> @ BHT					
R <sub>mf</sub> @ BHT					
R <sub>mc</sub> @ BHT					

Equip. Used: PANEL No. SONDE No.

Mud Log. Rm: Depth:

9-21-63 1180034925

SPONTANEOUS - POTENTIAL millivolts	DEPTHS	RESISTIVITY ohms - m <sup>2</sup> /m	
		Micro Inverse 1" x 1" 20	40
Micro <input type="checkbox"/> ES <input type="checkbox"/>		Micro Normal 2" 20	40
MICROCALIPER Hole Diameter in Inches			
5" 16"			

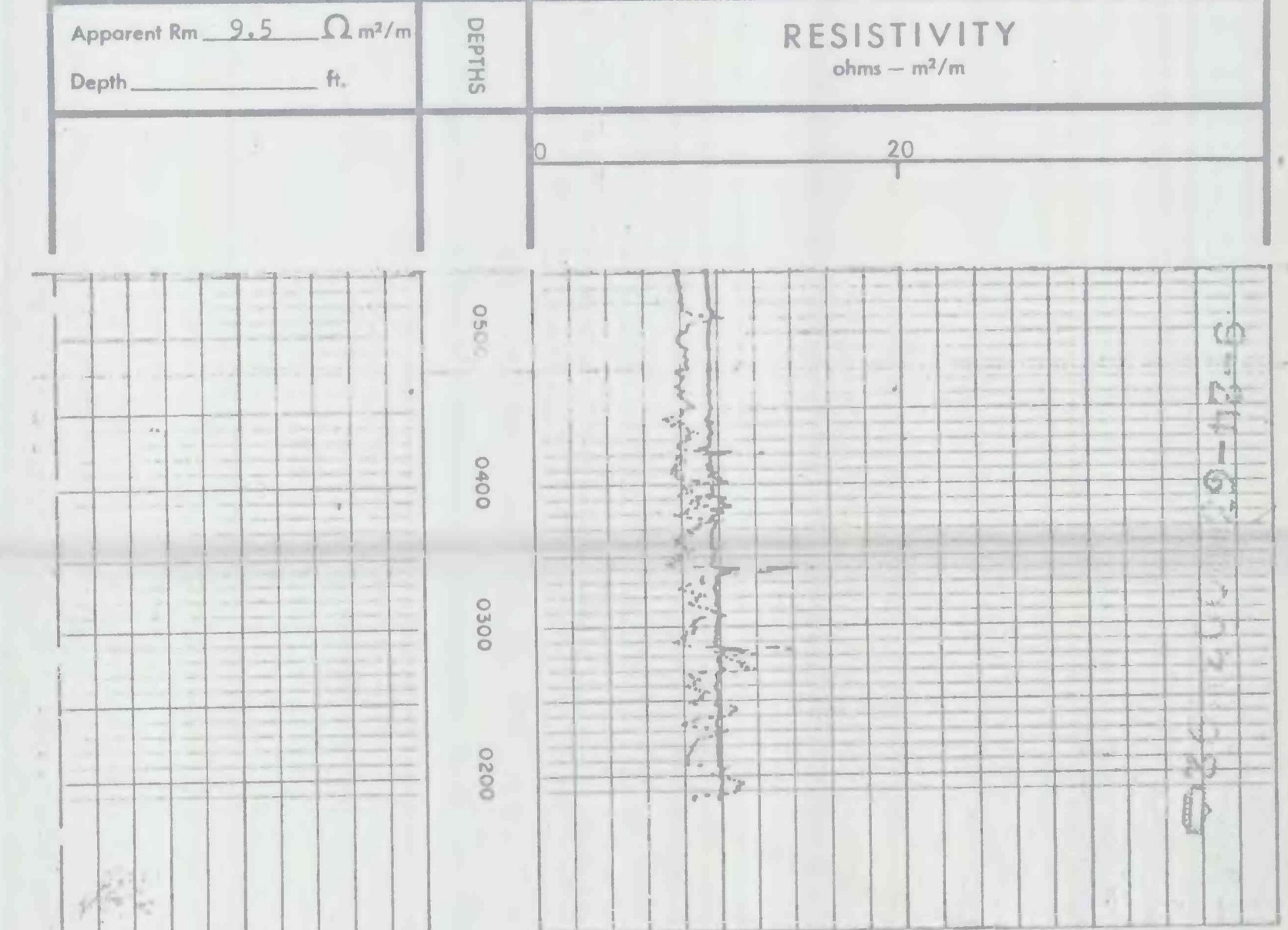


9-21-63 1180034925

MICROCALIPER Hole Diameter in Inches		RESISTIVITY ohms - m <sup>2</sup> /m	
5" 16"		Micro Inverse 1" x 1" 20	40
Micro <input type="checkbox"/> ES <input type="checkbox"/>		Micro Normal 2" 20	40
SPONTANEOUS - POTENTIAL millivolts		DEPTHS	
		0 20 40	

COMPANY WHITE SANDS MISSILE RANGE CORP OF ENGINEERS  
WELL MAR WATER SUPPLY  
FIELD WATER WELL  
COUNTY DONA ANA STATE NEW MEXICO

R<sub>m</sub> 8.0 @ 78 °F SWSC FR 649  
R<sub>mf</sub> @ °F SWSC TD 650  
R<sub>mc</sub> @ °F DRLR TD 650  
BHT °F Elev. KB  
DF  
GL 4132



9-21-63 1180034925