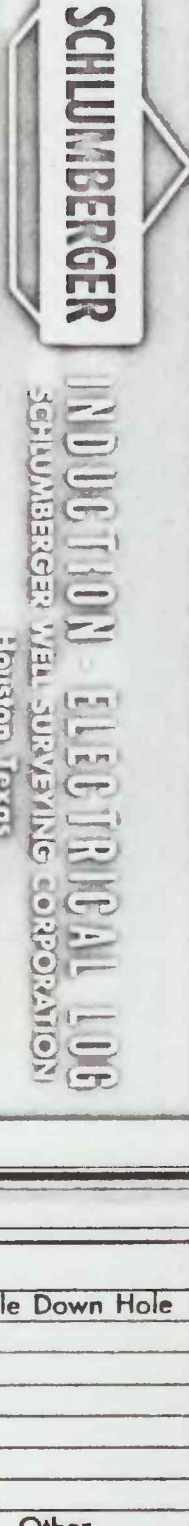


Well MAR 2 (19.5.17.334) Electrical Induction Log



COUNTY DONA ANA
 FIELD LOCATION WATER WELL
 WELL MAR WATER SUPPLY #2
 COMPANY WHITE SANDS MISSILE RANGE
 CORP OF ENGINEERS

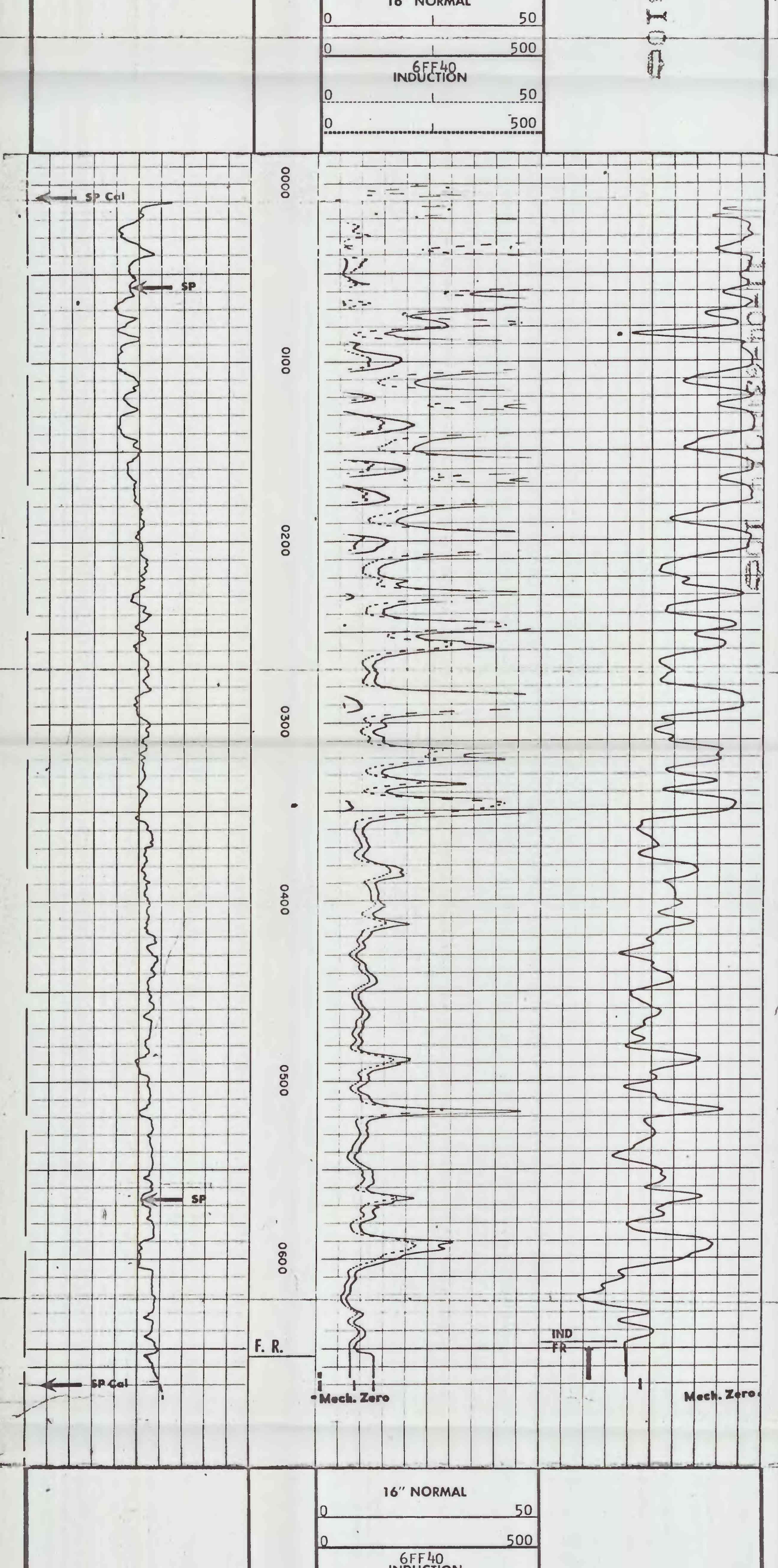
Sec. 17 Twp. 19-S Rge. 5-E
 Permian Datum - GROUND LEVEL Elev. KB N.A.
 Log Measured from - 100' Above Perm. Datum Elev. N.A.
 Drilling Measured from - KB Elev. N.A.
 Date 10-28-63
 Run No. ONE
 Depth-Driller
 Depth-Logger
 Term Log Interval
 Casing-Driller
 Casing-Logger

Bit Size 10-1/4"
 Type Fluid in Hole FRESH WATER GEL
 Dens. Visc.
 pH Fluid Loss
 Source of Sample
 R₁ @ Meas. Temp.
 R₂ @ Meas. Temp.
 R₃ @ Meas. Temp.
 Sources: R₁ R₂ R₃
 R₁ @ BHT
 R₂ @ BHT
 R₃ @ BHT
 Time Since Clog
 Max. Meas. Temp.
 Equip. Location
 Recorder
 Witnessed By

REMARKS

Changes in Mud Type or Additional Samples	Type Log	Depth	Scale Up Hole	Scale Down Hole
Date Sample No.				
Depth-Driller				
Type Fluid in Hole				
Dens. Visc.				
pH Fluid Loss				
Source of Sample				
R ₁ @ Meas. Temp.				
R ₂ @ Meas. Temp.				
R ₃ @ Meas. Temp.				
Sources: R ₁ R ₂ R ₃				
R ₁ @ BHT				
R ₂ @ BHT				
R ₃ @ BHT				

C.D.: USED S.O.: 1-1/2"
 Equip. Used CART. No. IRH-A 563
 PANEL No. IRP-E 45
 SONDE No. IRS-K 68

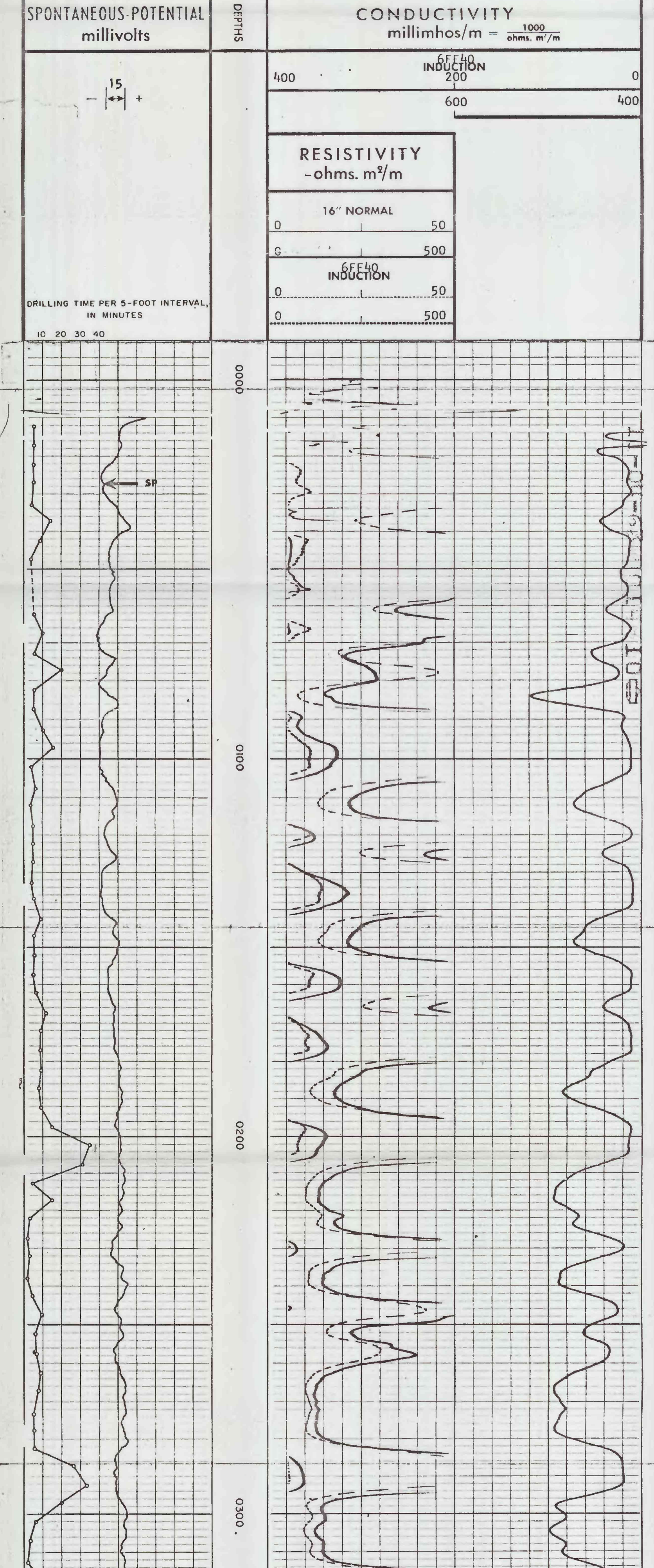


SPONTANEOUS-POTENTIAL millivolts	DEPTHS	CONDUCTIVITY millimhos/m = $\frac{1000}{\text{ohms. m}^2/\text{m}}$	
		6FF40 INDUCTION	200
15 - +	0	RESISTIVITY -ohms. m ² /m	
		16" NORMAL	50
0	0	6FF40 INDUCTION	
		50	500
0	0	RESISTIVITY -ohms. m ² /m	
		50	500
0	0	6FF40 INDUCTION	
		50	500

COMPANY WHITE SANDS MISSILE RANGE CORP OF ENGINEERS
 WELL MAR WATER SUPPLY
 FIELD WATER WELL
 COUNTY DONA ANA STATE NEW MEXICO

SWSC FR 653
 SWSC TD 654
 DRLR TD 650
 Elev. KB N.A.
 DF N.A.
 GI N.A.

DETAIL LOG
 5" = 100'



SPONTANEOUS-POTENTIAL millivolts	DEPTHS	CONDUCTIVITY millimhos/m = $\frac{1000}{\text{ohms. m}^2/\text{m}}$	
		6FF40 INDUCTION	200
15 - +	0	RESISTIVITY -ohms. m ² /m	
		16" NORMAL	50
0	0	6FF40 INDUCTION	
		50	500
0	0	RESISTIVITY -ohms. m ² /m	
		50	500
0	0	6FF40 INDUCTION	
		50	500

COMPANY WHITE SANDS MISSILE RANGE CORP OF ENGINEERS
 WELL MAR WATER SUPPLY #2
 FIELD WATER WELL
 COUNTY DONA ANA STATE NEW MEXICO

SWSC FR 653
 SWSC TD 654
 DRLR TD 650
 Elev. KB N.A.
 DF N.A.
 GI N.A.