

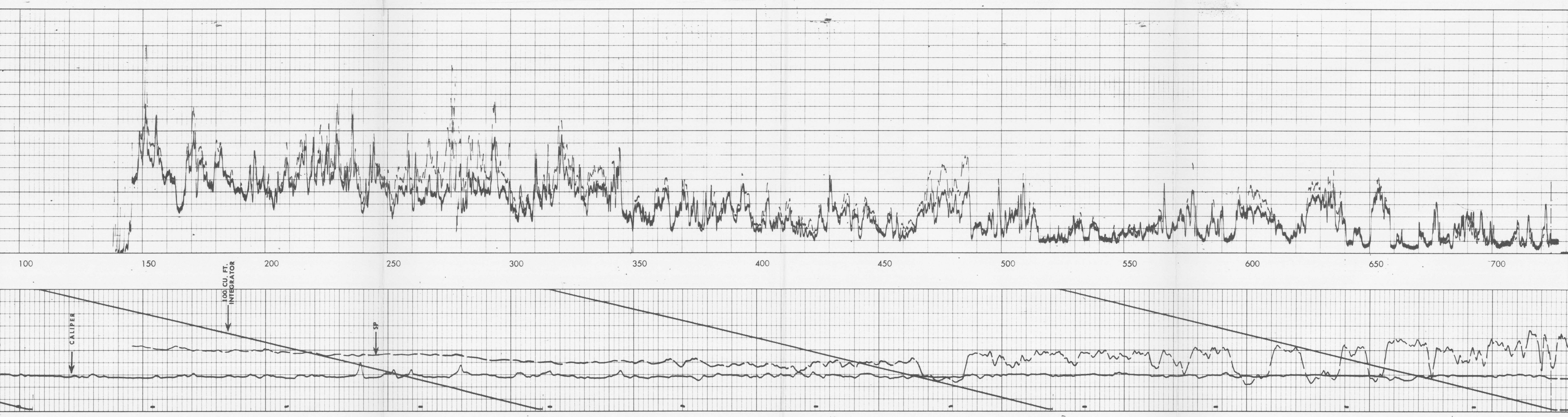
WELEX CONTACT CALIPER LOG

COMPANY CASS DRILLING COMPANY	
WELL ZMAR TEST WELL # 3	
FIELD WILDCAT	
COUNTY DONA ANA STATE NEW MEXICO	
Location NW NW NW Other Services: Ind-Elec	
Sec. 21 Twp. 19-S Rge. 5-E	
Permanent Datum Ground Level Elev. 4080 Est. Elev.: K.B.	
Log Measured From G.L. 0 Ft. Above Perm. Datum D.F.	
Drilling Measured From Ground Level G.L. 4080 Est.	
Date 7-2-63	
Run No. One	
Depth-Driller 750	
Depth-Welex 727	
Bitm. Log Inter. 724	
Top Log Inter. 140	
Casing-Driller None	
Casing-Welex -	
Bit Size 8-3/4"	
Type Fluid in Hole Clay Base Mud, Gel	
Dens. Visc.	
ph Fluid Loss	
Source of Sample Pit	
R _m @ Meas. Temp. 3.6 @ 80°F	
R _{nr} @ Meas. Temp. 3.0 @ 80°F	
R _{nr} @ Meas. Temp. 5.2 @ 80°F	
Source R _{nr} Measured	
R _m @ BHT 3.6 @ 80°F	
R _{nr} @ BHT 3.0 @ 80°F	
R _{nr} @ BHT 5.2 @ 80°F	
Time Since Circ.	
Max. Rec. Temp. 80°F @ BH	
Equip. Location 3001 Artesia	
Recorded By P.C. Harris	
Witnessed By Mr. Cass	

REMARKS Ticket: W-29870	
Change in Mud Type or Additional Samples	
Date Sample No.	
Depth-Driller	
Type Fluid in Hole	
Dens.	
Visc.	
ph	
Fluid Loss	
Source of Sample	
R _m @ Meas. Temp.	
R _{nr} @ Meas. Temp.	
R _{nr} @ Meas. Temp.	
Source R _{nr}	
R _m @ BHT	
R _{nr} @ BHT	
R _{nr} @ BHT	
Time Since Circ.	
Max. Rec. Temp.	
Equip. Location	
Recorded By	
Witnessed By	

Scale Down Hole	
Scale Up Hole	
Depth	
Type Log	
Run No.	
Tool Type and No.	
Pad Type	
Tool Position	
Other	

POTENTIAL MILLIVOLTS	
Rmf 3.0 at 80 °F.	
6 CALIPER	
Average Diameter Inches	



1.5" Lateral	10	20
2" Normal	10	20
POTENTIAL MILLIVOLTS		
Rmf 3.0 at 80 °F.		

Cass Drilling Company
Zmar Test Well # 3
Wildcat
Dona Ana County, New Mexico

T.D. LOGGED 724'
T.D. DRILLER 750'
T.D. WELEX 727'