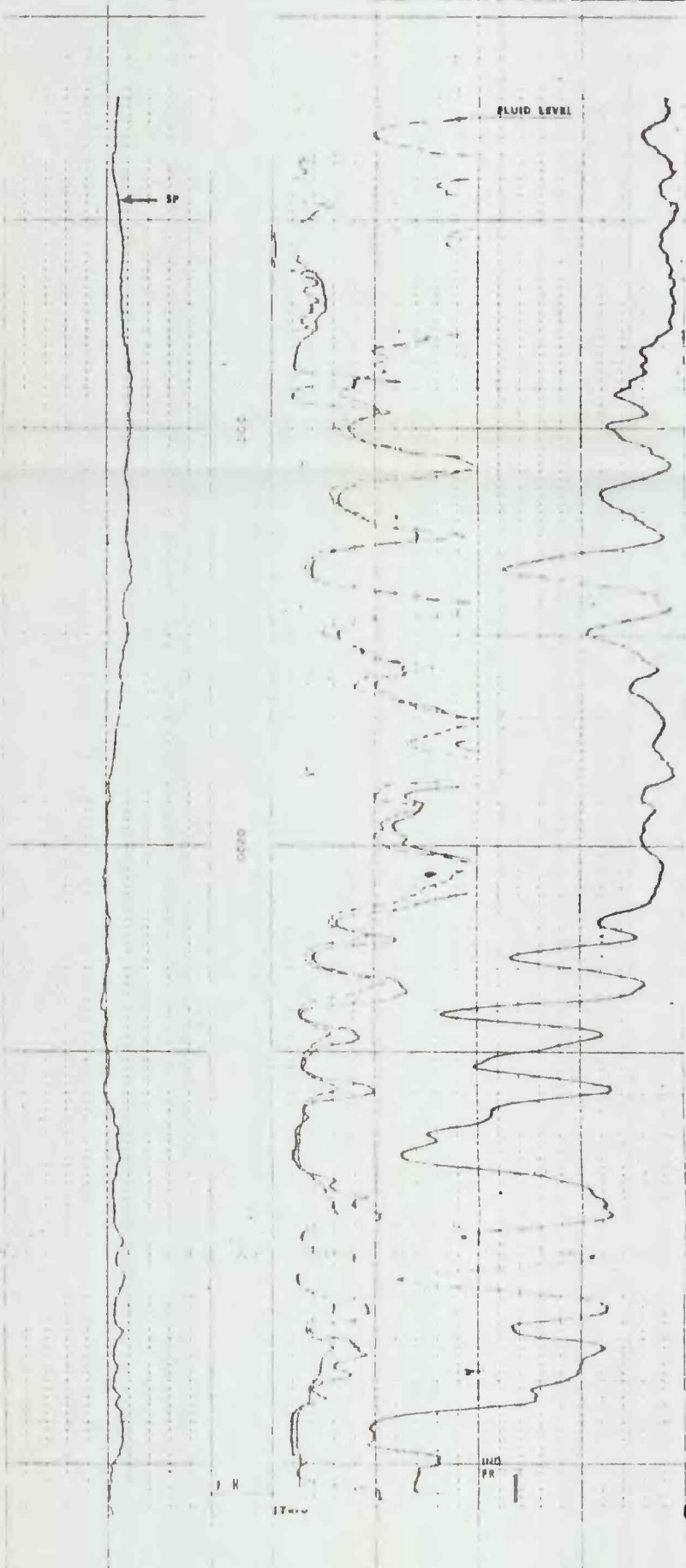


Figure 13.--Electric logs of wells in the Rhodes Canyon area - Concluded

Well 12.5.28.432 (RC-2)

SCHUMBERGER LOGGING SERVICE 10010 S. 10th St., Oklahoma City, Okla. 73160	
COUNTY: ALFRED FIELD or LOCATION: W. 1/4 Sec. 12, T. 28N., R. 28E., S. 4E. WELL: 12.5.28.432 COMPANY: L. A. HARRIS	STATE: N.M. COUNTY: SHERMAN LOCATION: 12.5.28.432 OTHER SERVICES:
Permanent Datum: 51.00 Log Measured From: 51.00 Drilling Measured From: 51.00	Permanent Datum: 51.00 Log Measured From: 51.00 Drilling Measured From: 51.00

DETAIL LOG	
SPONTANEOUS POTENTIAL millivolts	CONDUCTIVITY millimhos/m
	RESISTIVITY ohms m ² /m
	16 NORMAL
	INDUCTION



SCHUMBERGER LOGGING SERVICE 10010 S. 10th St., Oklahoma City, Okla. 73160	
COMPANY: L. A. HARRIS WELL: 12.5.28.432 COUNTY: SHERMAN LOCATION: 12.5.28.432 OTHER SERVICES:	STATE: N.M. COUNTY: ALFRED LOCATION: 12.5.28.432
Permanent Datum: 51.00 Log Measured From: 51.00 Drilling Measured From: 51.00	Permanent Datum: 51.00 Log Measured From: 51.00 Drilling Measured From: 51.00

