

EXPLANATION
SEDIMENTARY ROCKS

QUATERNARY
Recent
Qal
Alluvium

UNCONFORMITY
Tge
Tge
Tge

TERTIARY
Paleocene and Eocene
Tw
Wasatch formation (Eocene), unnamed unit (Paleocene), and Ohio Creek conglomerate (Paleocene)
Unconformity
Tertiary shale and clay with some lenticular sandstone and conglomerate and thin limestone beds. In basal part are brown sandstone and mudstone with thin coal seams and a local conglomerate.

CONTACT
Dashed where approximately located

FAULT
Dashed where approximately located, dotted where concealed. U, upthrown side; D, downthrown side

Strike and dip of beds

Well symbols
(shows oil or gas not indicated)
Core hole
Drilling well
Dry hole
Gas well
Oil well
Oil and gas well
Oil and gas test
Operations suspended

4000
Structure contours
Drawn on the slope marker of the Green River Formation; dashed where well control is poor. Contour interval 100 feet; datum is mean sea level

LIBRARY
OCT 2 1968
B. B. BOGREN, SURVEY
WASHINGTON, D.C.

Base modified from plate 48, U.S. Geological Survey Bulletin 1082

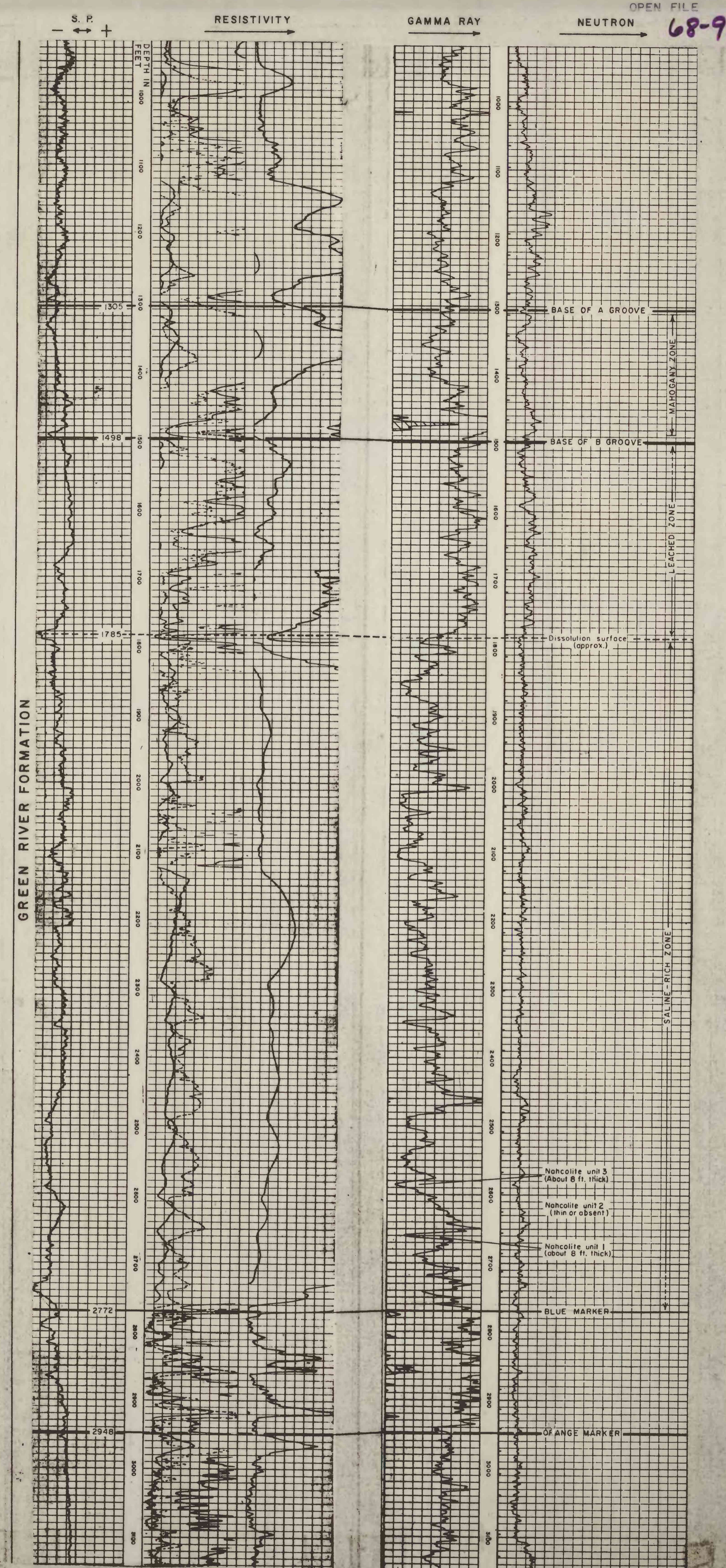
SCALE 1:125,000
0 1 2 3 4 5 6 Miles

Geology from Donnell (1961, plate 48)
Structure contours added by J.R. Dyni, 1968

PRELIMINARY STRUCTURE MAP OF THE NORTHERN PART OF THE PICEANCE CREEK BASIN, COLORADO

by Colorado (Piceance Creek basin). Structure. 1:125,000. 1968.
John R. Dyni sheet 1,
1968 cop. 1.

U. S. Geological Survey
OPEN FILE REPORT
This map is preliminary
and has not been edited or reviewed for
conformity with Geological Survey
standards or nomenclature.



Partial electric and gamma ray-neutron logs of Ohio Oil Co. Ryan's Creek well 1 in the NE 1/4 sec. 34, T. 1 S., R. 98 W., Rio Blanco County, Colo.