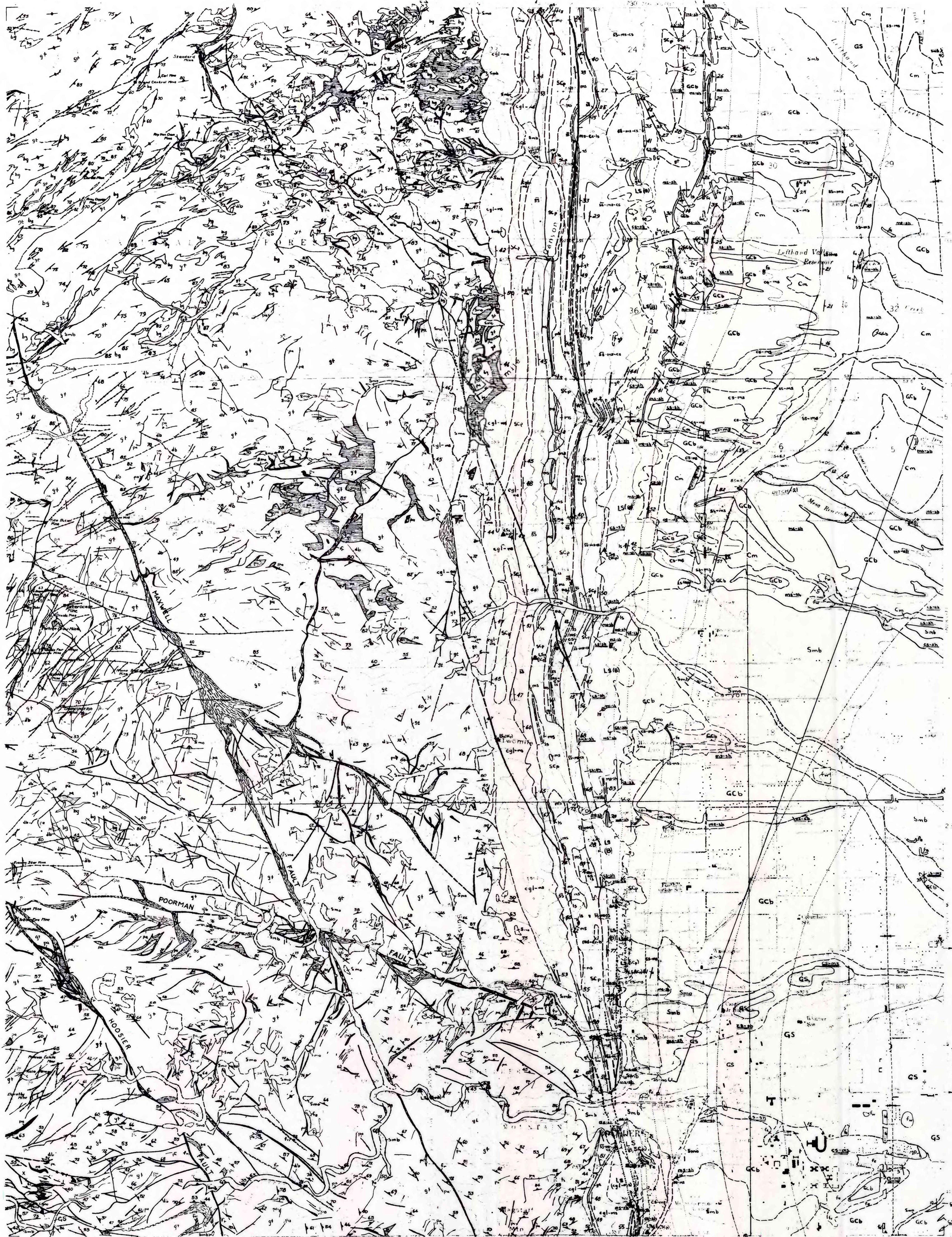


Prepared in cooperation with
THE DENVER REGIONAL COUNCIL OF GOVERNMENTS
Denver, Colorado



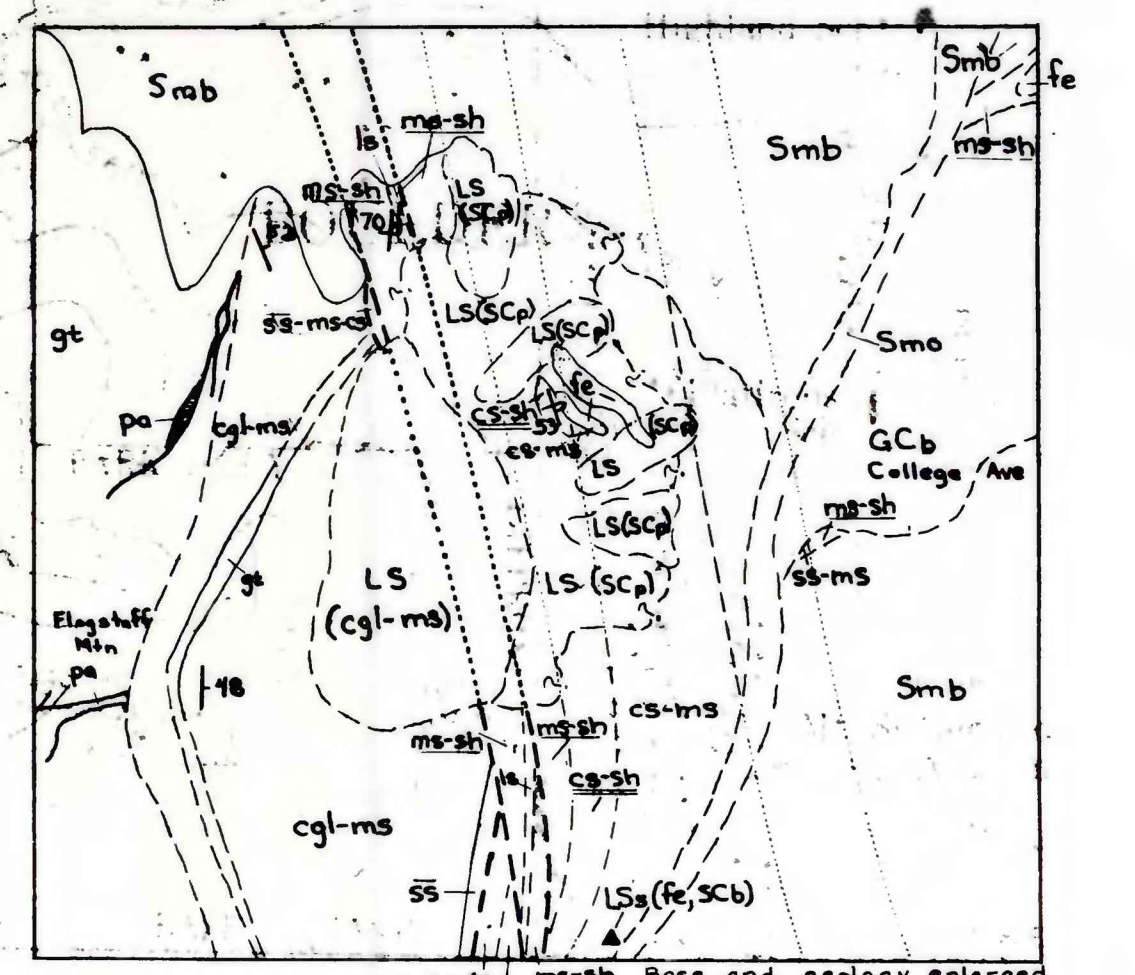
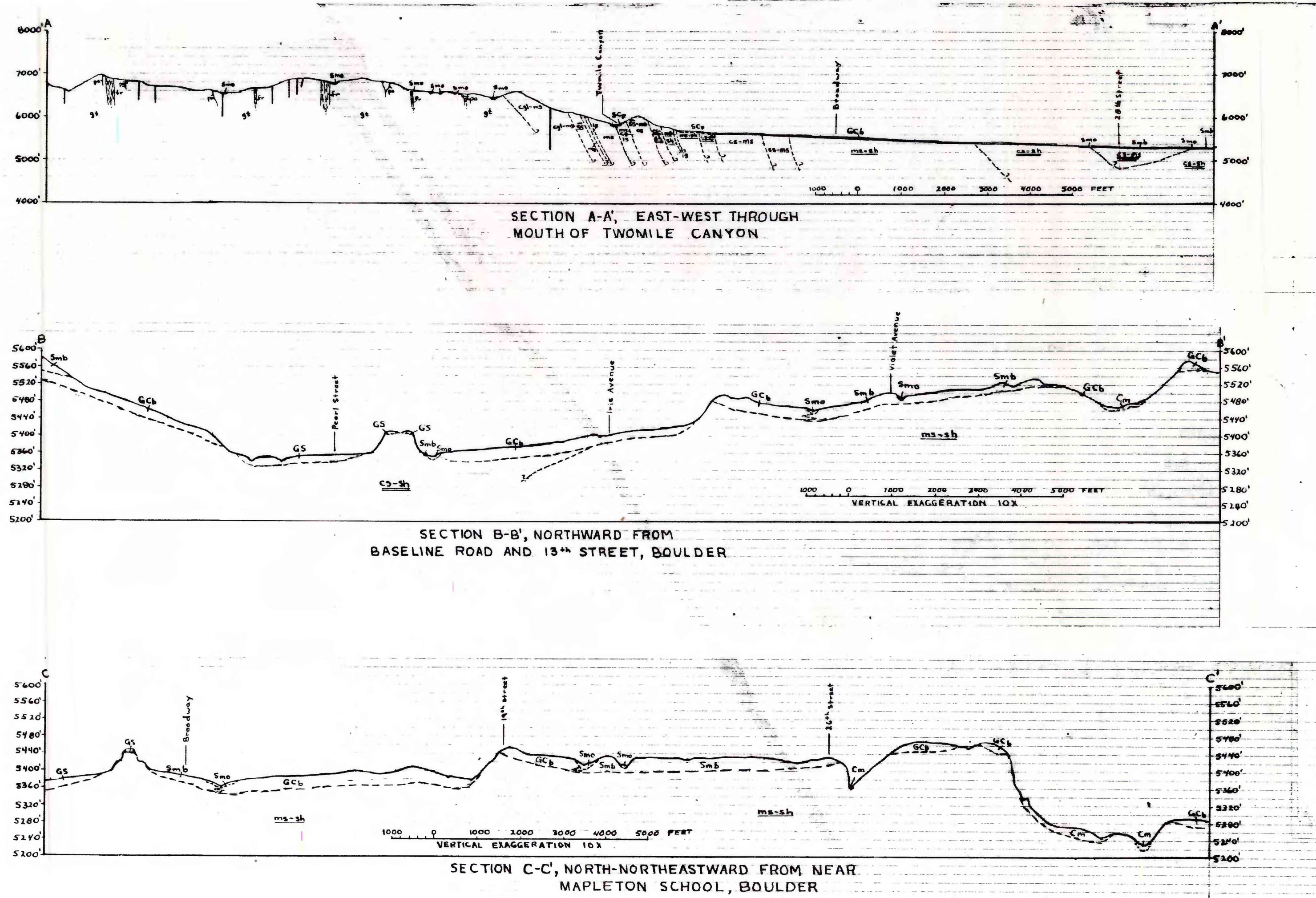
Base by U.S. Geological Survey, 1957

Modified from geology by C.T. Wruke and R.F. Wilson, 1958-64
with additions by M.E. Gardner, 1967-68

This report is preliminary and has not
been edited for conformity with
U.S. Geological Survey standards
and nomenclature.

PRELIMINARY ENGINEERING GEOLOGIC MAP OF THE BOULDER QUADRANGLE, BOULDER COUNTY, COLORADO

By
Maxwell E. Gardner



AREA OF LANDSLIDE DEPOSITS NEAR
WEST COLLEGE AVENUE AND FLAGSTAFF
MOUNTAIN, BOULDER, COLORADO

Scale 1:12,000
1000 0 1000 2000 3000 4000 FEET