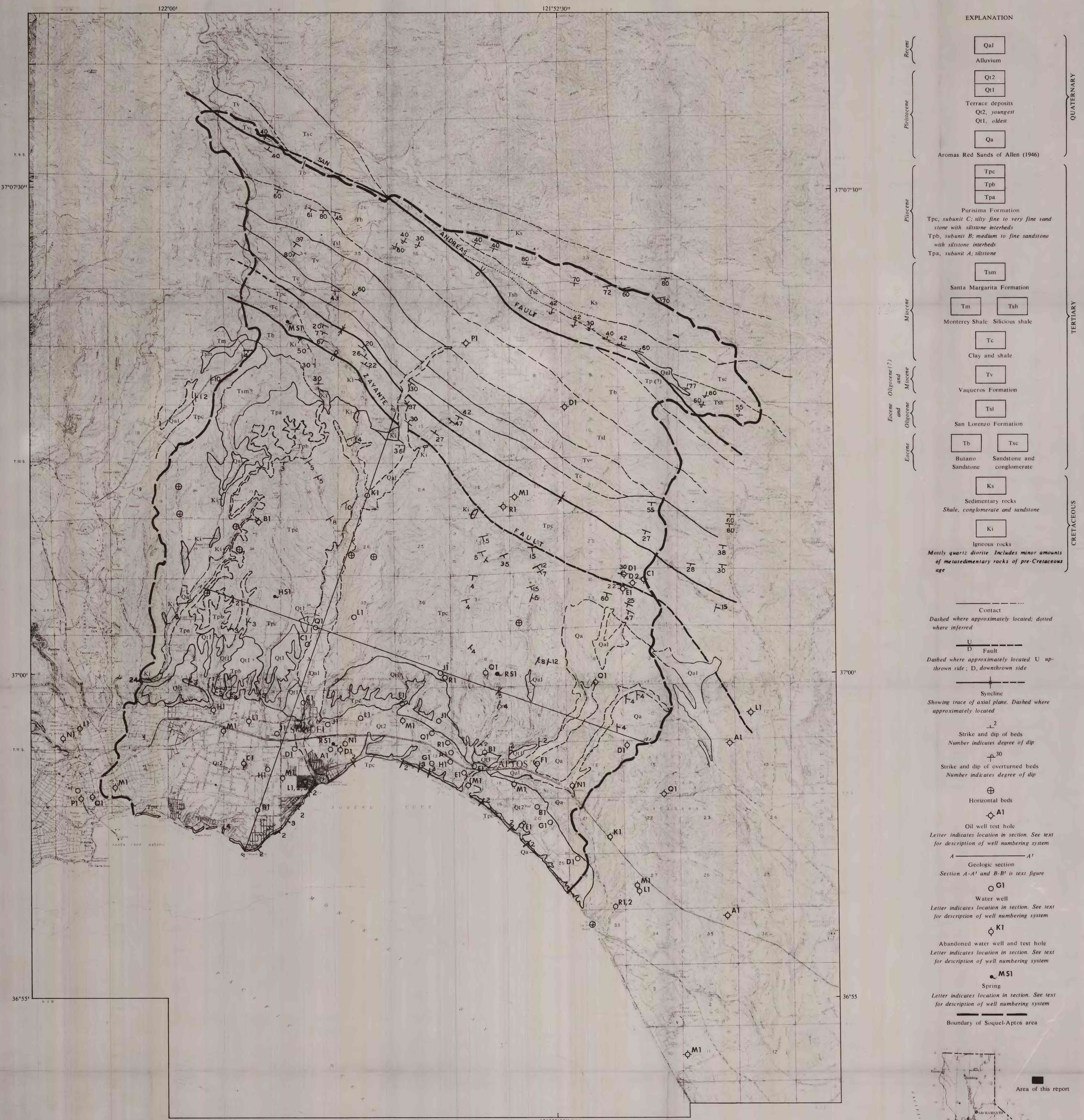


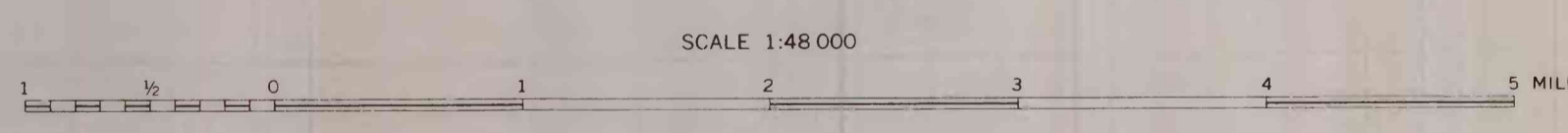
U.S. GEOLOGICAL SURVEY



EXPLANATION

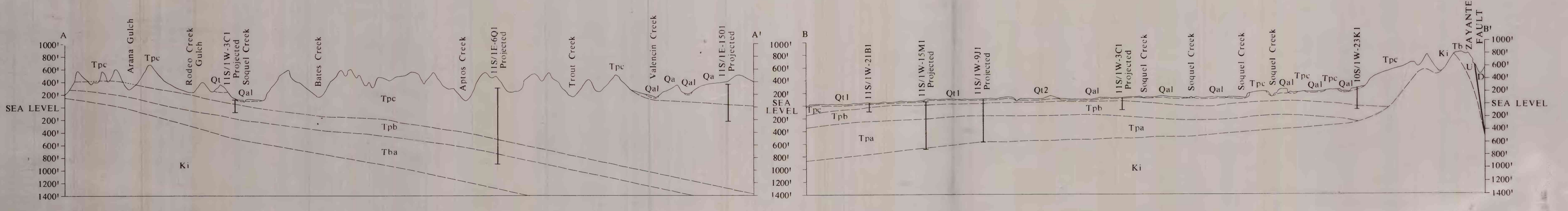
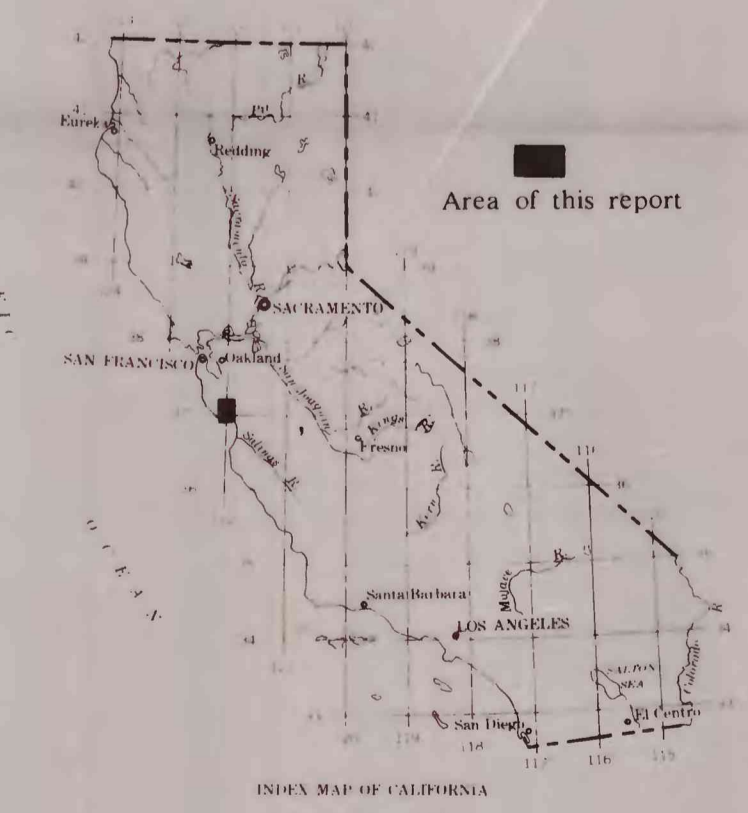
- QUATERNARY**
    - Qa1 Alluvium
    - Qt2, Qt1 Terrace deposits
      - Qt2, youngest
      - Qt1, oldest
    - Qa Aromas Red Sands of Allen (1946)
  - PLIOCENE**
    - Tpc Purisima Formation
      - Tpc, subunit C: silty fine to very fine sandstone with siltstone interbeds
      - Tpb, subunit B: medium to fine sandstone with siltstone interbeds
      - Tpa, subunit A: siltstone
  - MIOCENE**
    - Tsm Santa Margarita Formation
    - Tm, Tsh Monterey Shale - Silicious shale
    - Tc Clay and shale
    - Tv Vaqueros Formation
    - Tsl San Lorenzo Formation
    - Tb, Tsc Butano Sandstone and conglomerate
  - CRETACEOUS**
    - Ks Sedimentary rocks - Shale, conglomerate and sandstone
    - Ki Igneous rocks - Mostly quartz diorite. Includes minor amounts of metasedimentary rocks of pre-Cretaceous age
- Contact: Dashed where approximately located; dotted where inferred.  
 Fault: Dashed where approximately located U up-thrown side; D, downthrown side.  
 Syncline: Showing trace of axial plane. Dashed where approximately located.  
 Strike and dip of beds: Number indicates degree of dip.  
 Strike and dip of overturned beds: Number indicates degree of dip.  
 Horizontal beds: ⊕  
 Oil well test hole: ○ A1 (Letter indicates location in section. See text for description of well numbering system).  
 Geologic section: Section A-A' and B-B' is text figure.  
 Water well: ○ G1 (Letter indicates location in section. See text for description of well numbering system).  
 Abandoned water well and test hole: ○ K1 (Letter indicates location in section. See text for description of well numbering system).  
 Spring: ● MS1 (Letter indicates location in section. See text for description of well numbering system).  
 Boundary of Soquel-Aptos area: Solid line.

Base from U.S. Geological Survey topographic quadrangles, scale 1:24,000, 1940, 1954 and 1955



CONTOUR INTERVALS 20 AND 40 FEET  
 DATUM MEAN SEA LEVEL

Geology compiled from unpublished mapping by T.W. Dibbee, Jr with minor modifications by J.P. Akers and John J. Hickey



GEOLOGIC MAP OF THE SOQUEL-APTOS AREA, CALIFORNIA SHOWING LOCATION OF HYDROGEOLOGIC DATA POINTS