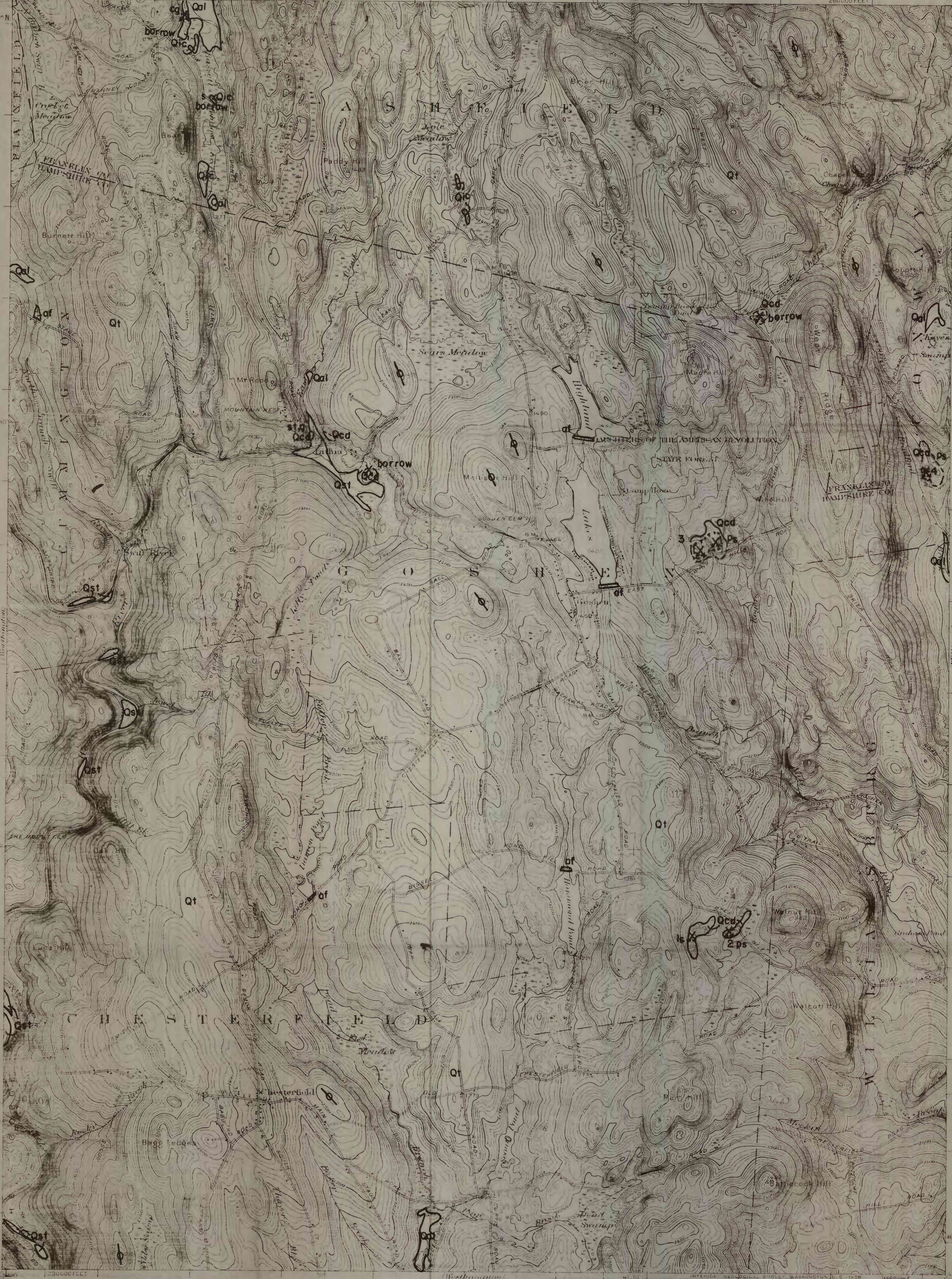


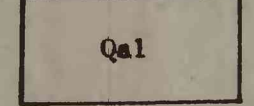
PLEASE REPLACE IN POCKET
IN BACK OF BOUND VOLUME

68-132

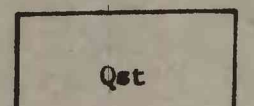


EXPLANATION

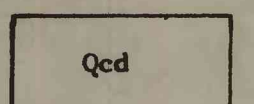
Recent



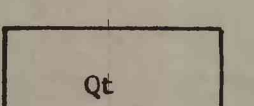
Alluvium
Silt, sand, and gravel in
swales



Stream terrace deposits
Sand and gravel, typically well
stratified, occurring as low,
segmented terraces on major
streams. Probably glacial in
origin, but not demonstrably
related to an ice-front
position



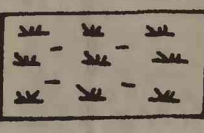
Ice-contact stratified drift
Kettled, collapsed, or eroded
glacio-fluvial deposits, mostly
sand, in small kames



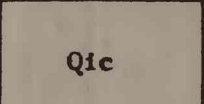
Till
Boulders, gravel, sand, silt
and clay, nonsorted to poorly
sorted, with a few bodies of
sand and gravel. Deposited
directly by glacial ice which
advanced generally from north-
west to southeast

Contact, dashed where
inferred

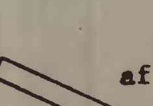
Summit of drumlinoid hill,
one composed partly of
till, smoothed and stream-
lined by glacial motion.
Only best formed drumlinoid
hills are so identified



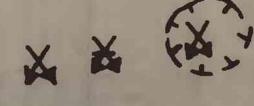
Swamp deposits
Organic matter, undecom-
posed to partly decom-
posed, generally mixed
with peat, silt and
sand. Shown by conven-
tional symbol



Ice-channel deposits
Gravel and sand, normally
well stratified, in low,
narrow ridges; mostly
sand. Formed in tunnels
in the ice or in other
ice channels



Artificial fill, man-
made dams and beaver
dams



Construction materials pit
Crossbar indicates inactive pit
Letter symbols: s, sand;
ps, pebble sand; st, g silty
gravel; cg, cobble gravel; t,
till. Number refers to data
sheets. Hachures indicate
series of pits. Minor pits
unnumbered

QUATERNARY

PRELIMINARY MATERIALS MAP
of the
GOSHEN QUADRANGLE
MASSACHUSETTS
By
C. William Holmes

SCALE 1:24,000



CONTOUR INTERVAL 10 FEET

U.S. GEOLOGICAL SURVEY
LIBRARY
MAR 1 1968
DENVER

Geology mapped in 1966, 1967 by
C. William Holmes, assisted by
George C. Kelley, 1967

U.S. Geological Survey
OPEN FILE MAP
This map is preliminary and has
not been edited or reviewed for
conformity with Geological Survey
standards or nomenclature.

Geology mapped by C. William
Holmes, 1966, 1967, assisted
by George C. Kelley, 1967