

132

132

SCHLUMBERGER WELL SURVEYING CORPORATION

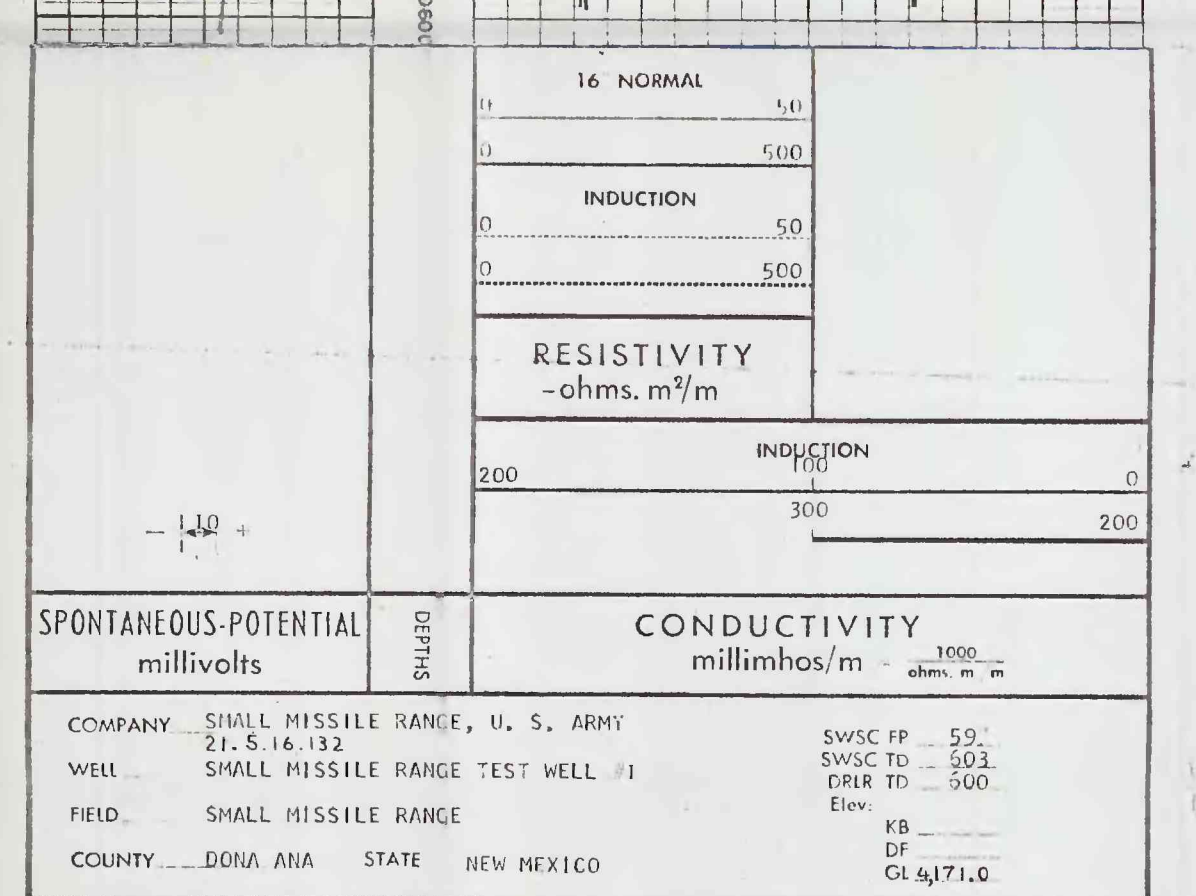
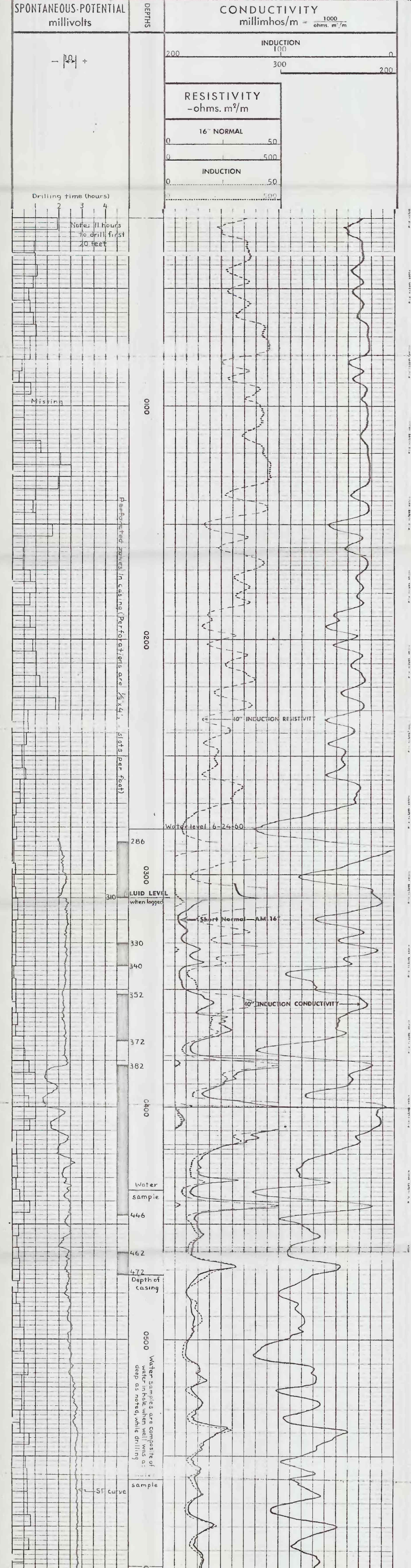


COUNTY	DONA ANA
FIELD or LOCATION	SMALL MISSILE RANGE
WELL	SMALL MISSILE RANGE TEST WELL #1
COMPANY	SMALL MISSILE RANGE U. S. ARMY
COMPANY SMALL MISSILE RANGE	U. S. ARMY
WELL	SMALL MISSILE RANGE
TEST WELL #1	
FIELD	SMALL MISSILE RANGE
LOCATION	
COUNTY	DONA ANA
STATE	NEW MEXICO
Elevation: D.F. or G.L. 41.0	
FILE NO.	

RUN NO.	6-14-60
Date	6-14-60
First Reading	597
Last Reading	20
Feet Measured	577
Csg. Schum.	
Csg. Driller	07
Depth Reached	603
Bottom Driller	
Depth Datum	500
TOP OF SURFACE Csg. OR GRUND. LEVEL	NATURAL
Dens. Visc.	
Mud Resist.	
Res. BHT	
Rmt	
PH	
Wt. Loss	
Bl. Size	
Specs. AM	
IND.	
Opt. Rig Time	
Truck No.	
Recorded By	
Witness	

REMARKS C.D. USED ; S.O. 1" 6-inch casing installed after logging

Cartridge No. TRII-A-563
Penet No. 111-1-22
Sonde No. IRS-K-68



COMPANY	SMALL MISSILE RANGE, U. S. ARMY
WELL	21.5.16.132
FIELD	SMALL MISSILE RANGE
COUNTY	DONA ANA
STATE	NEW MEXICO
SWSC FP	59
SWSC TD	503
DRLR TD	500
Elev.	
KB	
GL	41.0

Figure 12. -- Induction-Electric Log of Test Well SMR-1 (21.5.16.132), White Sands Missile Range, N. Mex.

68-138