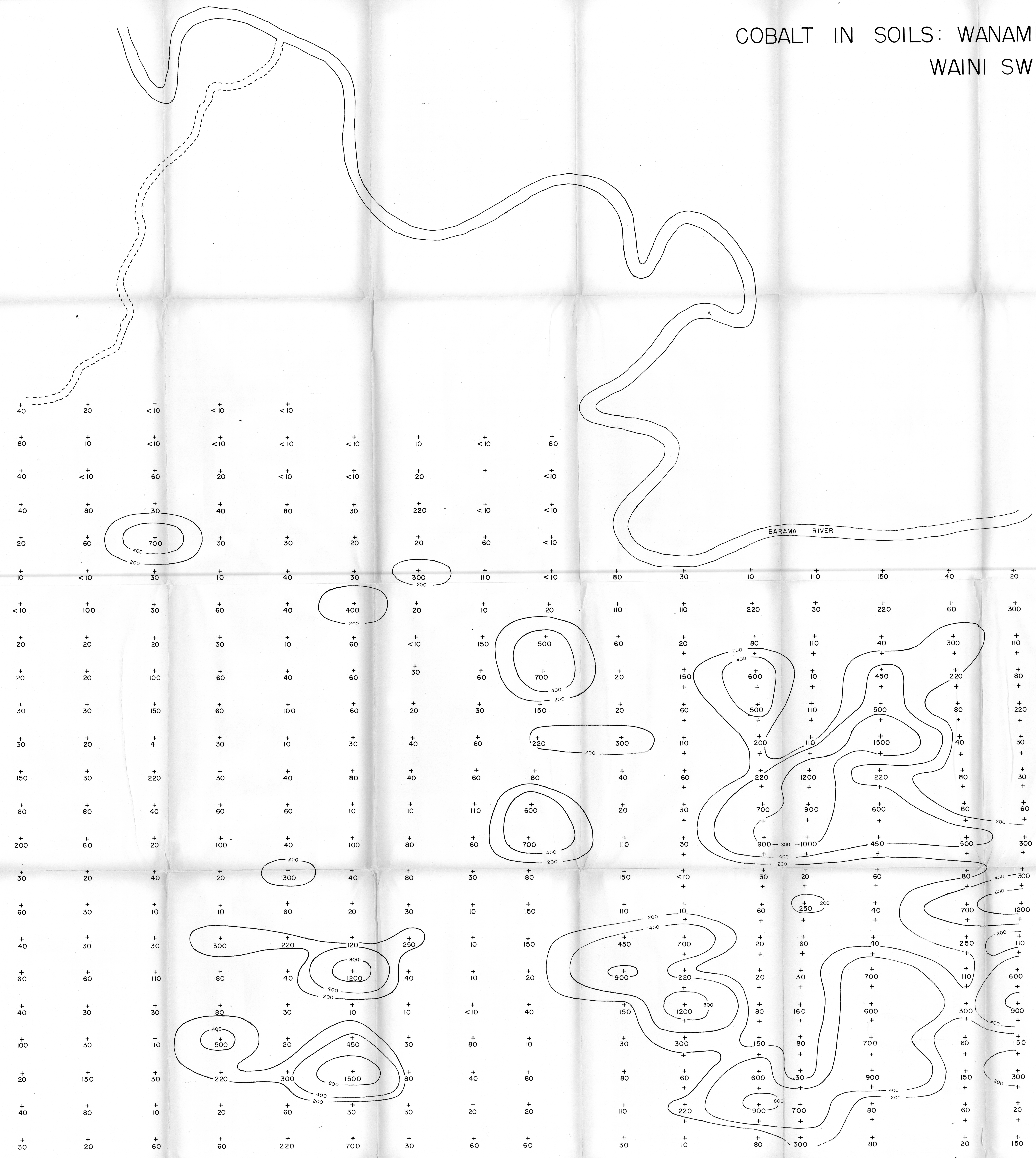


# COBALT IN SOILS: WANAMU-BLUE MOUNTAINS AREA WAINI SW, GUYANA

CSM T-1186 PLATE 5

## EXPLANATION

COBALT ANALYSES COLORIMETRIC (ON -80 MESH FRACTION)  
BY USGS LABS, DENVER, COLORADO  
SOIL SAMPLES COLLECTED FROM 2-FT DEPTH BY  
B.E. KILPATRICK, APRIL 1967



+  
500  
COBALT, PPM  
SAMPLE LOCATIONS

