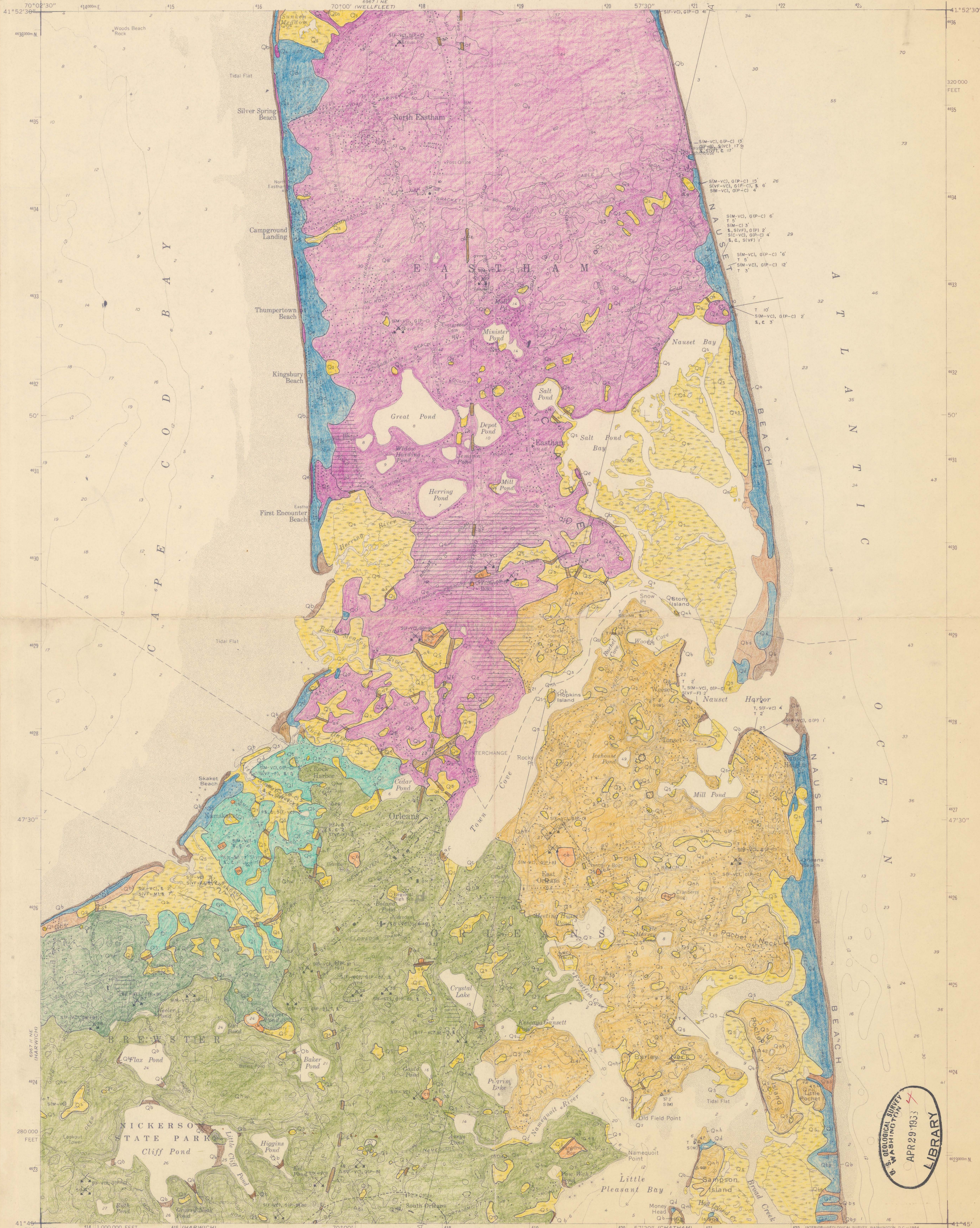


U.S. Geological Survey  
 OPEN FILE MAP  
 This map is preliminary and has  
 not been edited or reviewed for  
 conformity with Geological Survey  
 standards or nomenclature.

Prepared in cooperation with  
 STATE OF MASSACHUSETTS  
 DEPARTMENT OF PUBLIC WORKS

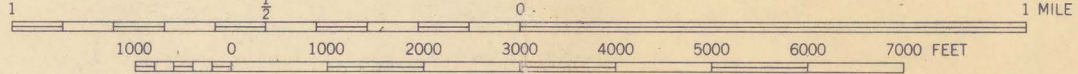
UNITED STATES  
 DEPARTMENT OF THE INTERIOR  
 GEOLOGICAL SURVEY

ORLEANS QUADRANGLE  
 MASSACHUSETTS—BARNSTABLE CO.



Base by U.S. Geological Survey, 1962

SCALE 1:24,000



CONTOUR INTERVAL 10 FEET  
 DATUM IS MEAN SEA LEVEL

GEOLOGIC MAP OF THE ORLEANS QUADRANGLE, CAPE COD, MASSACHUSETTS

By *Massachusetts (Orleans quad.) Geol. sheet 01, cop. 1*  
 R.N. Oldale, Carl Kofeff, J. H. HARTSHORN

Geology mapped in 1965

M(200)  
 R29a  
 no. 68-203  
 sheet  
 1 of 2

