

SOUTHEASTERN LANDER COUNTY, OPEN FILE

EXPLANATION

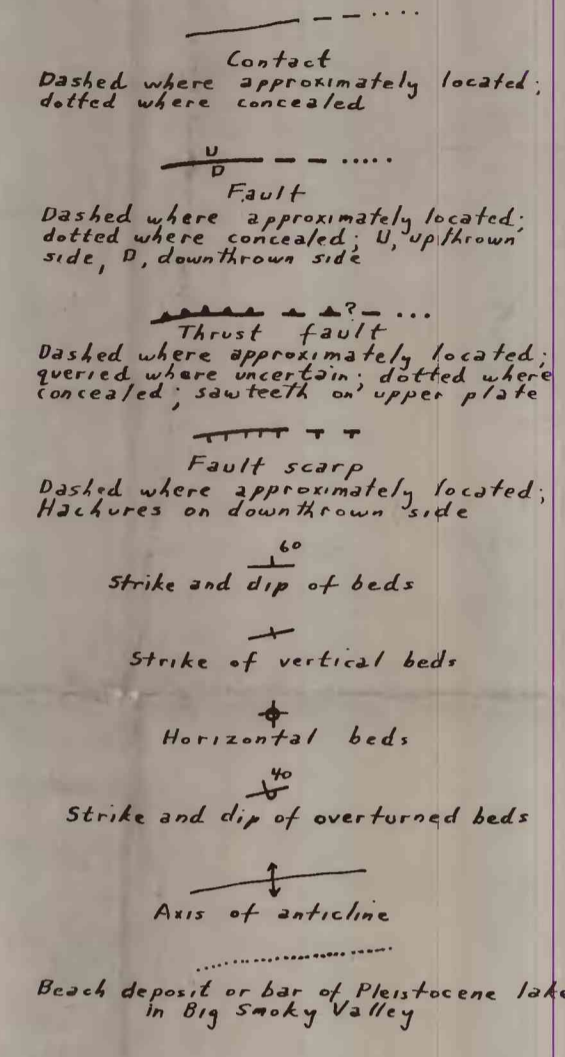
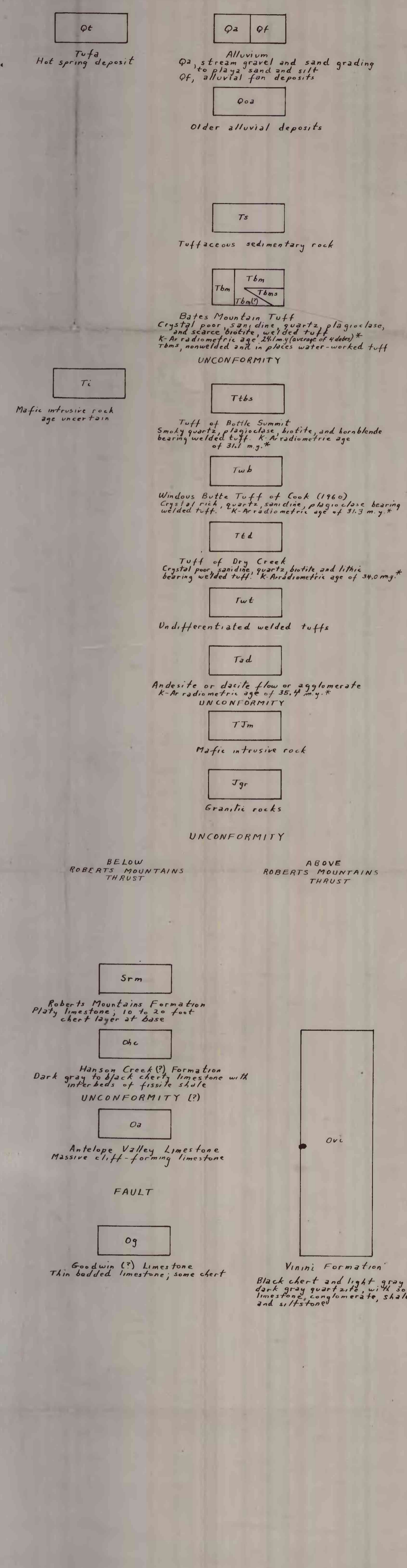
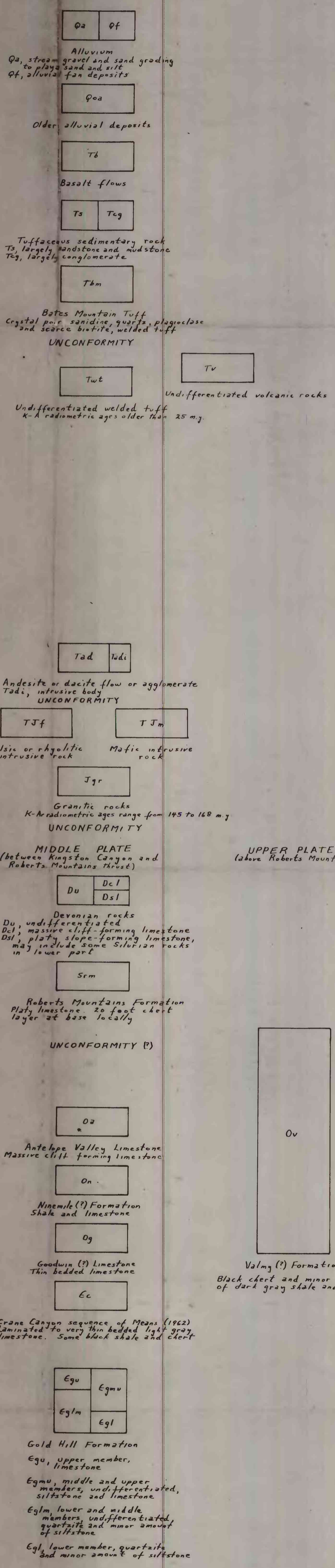
OFR 68-260

TOIYABE RANGE

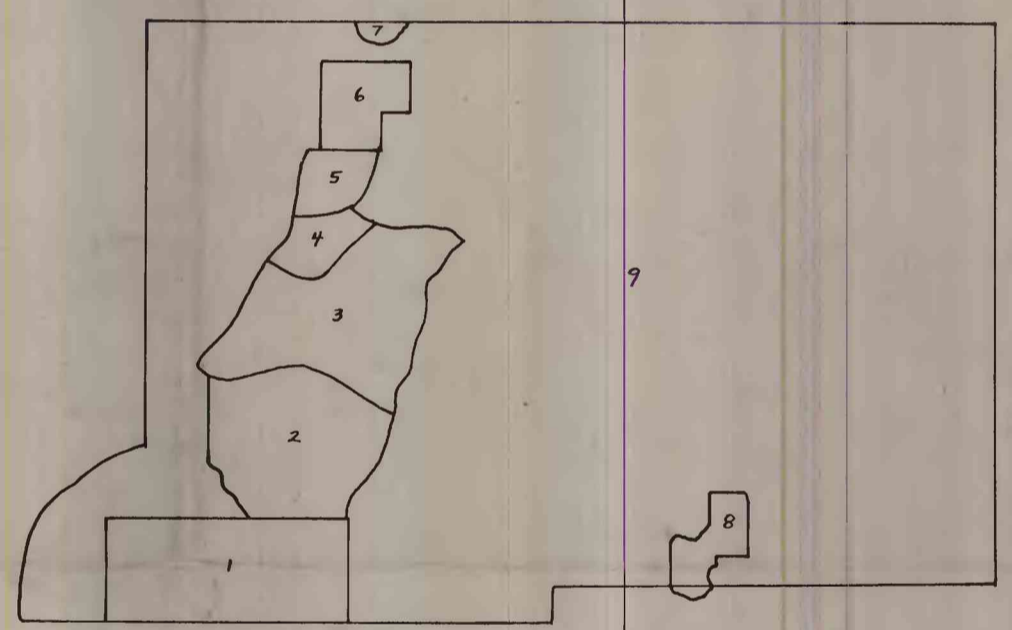
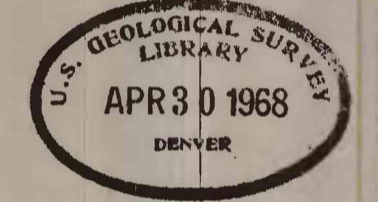
TOQUIMA AND SIMPSON PARK RANGES AND GRIMES HILLS AREA

PLEISTOCENE RECENT
PLIOCENE (?)
OLIGOCENE MIOCENE
OLIGOCENE
LOWER AND UPPER ORDOVICIAN
LOWER AND MIDDLE ORDOVICIAN
LOWER ORDOVICIAN
MIDDLE AND UPPER CAMBRIAN
LOWER CAMBRIAN

QUATERNARY
TERTIARY
JURASSIC
DEVONIAN
SILURIAN
ORDOVICIAN
CAMBRIAN



* Potassium-argon radiometric ages by Elmer H. McKe, U.S. Geological Survey Isotope Laboratory, Menlo Park, California. Analytical precision on these ages is approximately 10% of the given age.



SOURCES OF INFORMATION

1. Modified from Means, 1962
2. Geologic mapping by D. B. MacLachlan (written comment, 1960) and by J. H. Stewart in 1962
3. Modified from Washburn, 1966
4. Modified from Hansen, 1961
5. Modified from Lowell, 1958
6. Modified from Nye, 1958
7. Modified from Ross, 1953
8. Geologic mapping by E. H. McKe in 1967 based in part on work by Kay and Crawford, 1967
9. Geologic mapping by J. H. Stewart and E. H. McKe in 1966 and 1967

REFERENCES CITED

Cook, E. F., 1960, Great Basin ignimbrites: Intermountain Assoc. Petroleum Geologists and Eastern Nevada Geol. Soc. Guidebook, 11th Ann. Field Conf., p. 134-150.

Hansen, H. J., 1961, Geology of the Big Creek area, Toiyabe Range, Lander County, Nevada: M. A. Thesis, Columbia Univ.

Kay, Marshall, and Crawford, J. P., 1964, Paleozoic facies from Mississippian to the Cretaceous in thrust slices, central Nevada: Geol. Soc. Bull., v. 75, no. 5, p. 425-454.

Lowell, J. D., 1958, Lower and Middle Ordovician stratigraphy in eastern and central Nevada: Ph. D. Thesis, Columbia Univ.

Means, W. D., 1962, Structure and stratigraphy in the central Toiyabe Range, Nevada: Univ. Calif. Publ. Geol. Sci., v. 42, no. 2.

Nye, T. S., 1958, Geology of the Apex uranium mine, Lander County, Nevada: M.S. Thesis, Univ. Calif.

Ross, C. P., 1953, The geology and ore deposits of the Reese River district, Lander County, Nevada: U.S. Geol. Survey Bull. 997, 132 p.

Washburn, R. D., 1966, Structure and Paleozoic stratigraphy of the Toiyabe Range, southern Lander County, Nevada: Ph. D. Thesis, Columbia Univ.