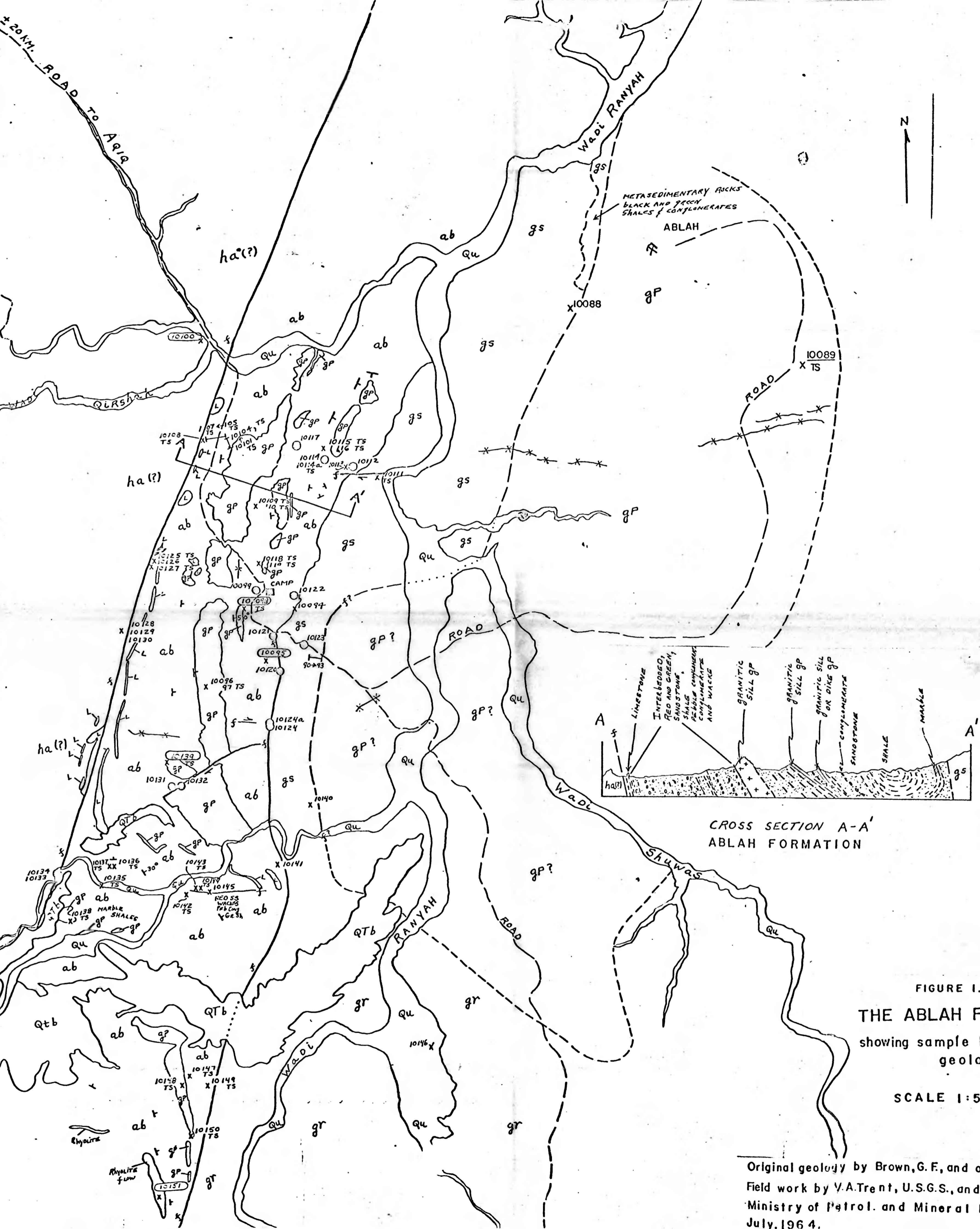


EXPLANATION

**QU** WAQI SAND, SILT, AND GRAVEL  
**QTb** BASALT  
**gp** PERALKALIC GRANITE  
**fab** ABLAH FORMATION WITH LIMESTONE AND MARBLE BEDS (L)  
**ha(?)** HALABAN, (OR YOUNGER) ANDESITE AND RHYOLITE LAVAS  
**gr** BIOTITE GRANITE  
**gs** CHLORITE SCHIST  
**---** dike  
**---** STRIKE AND DIP OF BROS  
**---** GEOLGIC CONTACT DASHED WHERE INDEFINITE, DOTTED WHERE CONCEALED  
**---** FAULT DASHED WHERE INDEFINITE, DOTTED WHERE CONCEALED  
**○** WAQI SAND SAMPLE LOCATION  
**10122** SAMPLE NUMBER  
**X** HAND SPECIMEN  
**TS** THIN SECTION  
**10100** ROCK SAMPLE WITH SPECTROGRAPHIC ANALYSES  
**X** 10089 ROCK SAMPLE FOR AGE DETERMINATION  
**✕** ABLAH ANCIENT MINE



Spectrographic Analysis of wa di sand samples (-30+80 fraction)

SAMPLE NUMBER	COPPER PPM	ZINC PPM	Molybdenum PPM
10,099			
10,112	30	—	—
10,114	30	—	—
10,117	20	—	2
10,120	10	—	—
10,121	20	—	—
10,122	30	—	2
10,123	20	—	—
10,124	15	—	—
10,124a	15	—	—
10,131	20	—	—
10,132	20	—	—
10,133	30	—	—
10,134	50	—	—

PPM (PARTS PER MILLION)

Spectrographic Analysis of Rock samples

SAMPLE NUMBER	COPPER PPM	ZINC PPM	Molybdenum PPM
10,095	10	—	7
10,098	30	—	5
10,100	2000	—	—
10,105	15	—	—
CONGLOMERATE	10	—	—
10,128	70	—	—
10,129	30	100	—
10,130	70	—	—
10,139	<10	—	—
10,151	100	—	150

Analyst: C.E. Thompson, U.S.G.S.  
 NOTE: Rock samples 10105 through 10130 analysed by K.H.  
 Shabwan, Ministry Petrol. and Mineral Resources, Dir. Gen. Mineral Resources.

FIGURE I.  
 THE ABLAH FORMATION  
 showing sample locations and geology

SCALE 1:50,000

Original geology by Brown, G.F. and others, 1962.  
 Field work by V.A. Trent, U.S.G.S., and G.H. Sultan,  
 Ministry of Petrol. and Mineral Resources, June-July, 1964.