

AEROMAGNETIC MAP OF THE MCNAIR-GRAND PORTAGE AREA
NORTHEASTERN MINNESOTA

SCALE 1:125,000

0 10 MILES

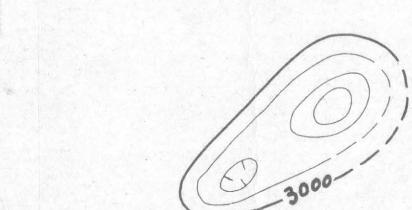
NORTH

Compilation based on U.S. Geological Survey 250,000 series
quadrangles: FTW 1114, 1165; Hancock, 1154; Quetico, 1166;
and Two Harbors, 1164

U.S. GEOLOGICAL SURVEY
Released to open files
APR 23 1968

Aeromagnetic survey, flown at 1000 feet
above ground by R.A. Shedd, 1966
Compiled by G.L. Kruger

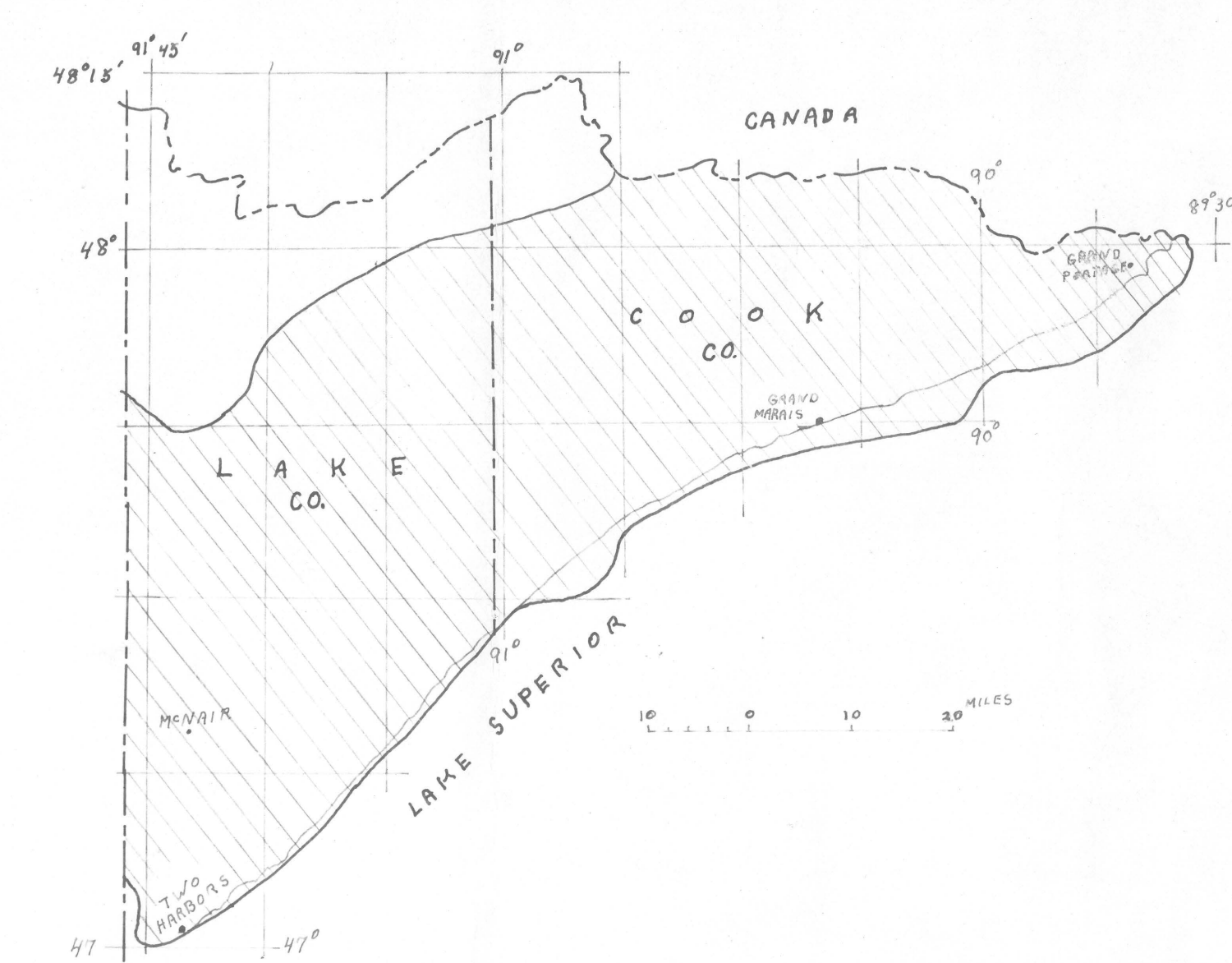
EXPLANATION



Magnetic contours showing total intensity
magnetic field of the earth in gamma units
relative to arbitrary datum
Reduced to 1955 epoch and corrected for magnetic
diurnal variations and for magnetic
latitude, longitude, and altitude

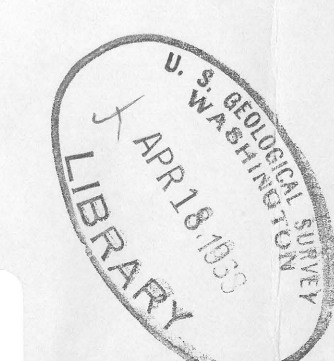
Location of magnetic measurements or stations
indicated by dots, circles, or squares

Flight path
Showing location and ground track



INDEX MAP OF MINNESOTA SHOWING LOCATION
OF THIS OPEN FILE MAP

This map is preliminary
and has not been edited
or reviewed for conformity
to Geological Survey
standards.



Minnesota (McNair-Grand Portage area). Aeromagnetic. 1:125,000. 1968.