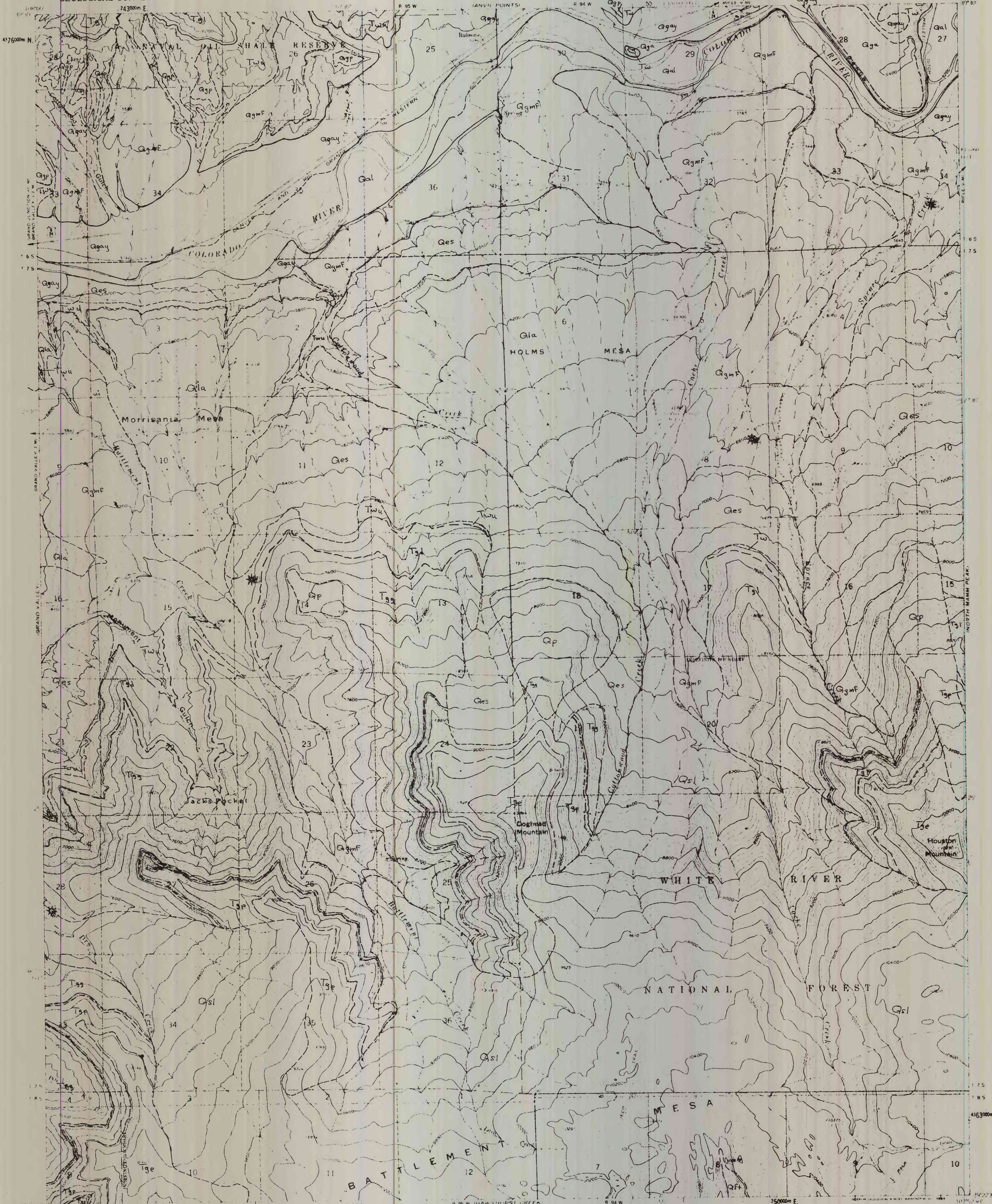


68-335  
68-335

DEPARTMENT OF THE INTERIOR  
UNITED STATES GEOLOGICAL SURVEY  
OPEN FILE REPORT 1968

RULISON QUADRANGLE  
COLORADO-GARFIELD CO.  
7.5 MINUTE SERIES (TOPOGRAPHIC)

UNITED STATES  
DEPARTMENT OF THE INTERIOR  
GEOLOGICAL SURVEY



Base by U.S. Geological Survey, 1960

Topographic features are shown in brown and black. Contour lines are shown in brown. The map is overlaid with a grid of 30-minute squares, numbered 1 through 36. The map is titled 'Geologic map of the Rulison quadrangle, Garfield County, Colorado' and includes a scale bar and a legend.

Geologic map of the Rulison quadrangle, Garfield County, Colorado  
by  
Warren E Yeend and John R Donnell

Geology mapped in 1964  
ROAD CLASSIFICATION  
Heavy duty ——— Light duty ———  
Unimproved dirt ———  
U.S. Route

QUADRANGLE LOCATION

RULISON, COLO  
N49°25' - W107°52'7.5  
1960

This report is preliminary and has not been edited or reviewed for conformity with U.S. Geological Survey standards and nomenclature.

This edition is a partial revision of the standard topographic quadrangle map. Contours and woodland areas are omitted.