

**EXPLANATION**

**QUATERNARY**

Qal Alluvium

Qgr Gravel

Tsl Salt Lake(?) Formation

pTu Bedrock, undifferentiated

**CONTACT**

Provo shoreline of Lake Bonneville

Fault, approximately located

Well and number

Well log used in geologic section

**PRE-TERTIARY QUATERNARY**

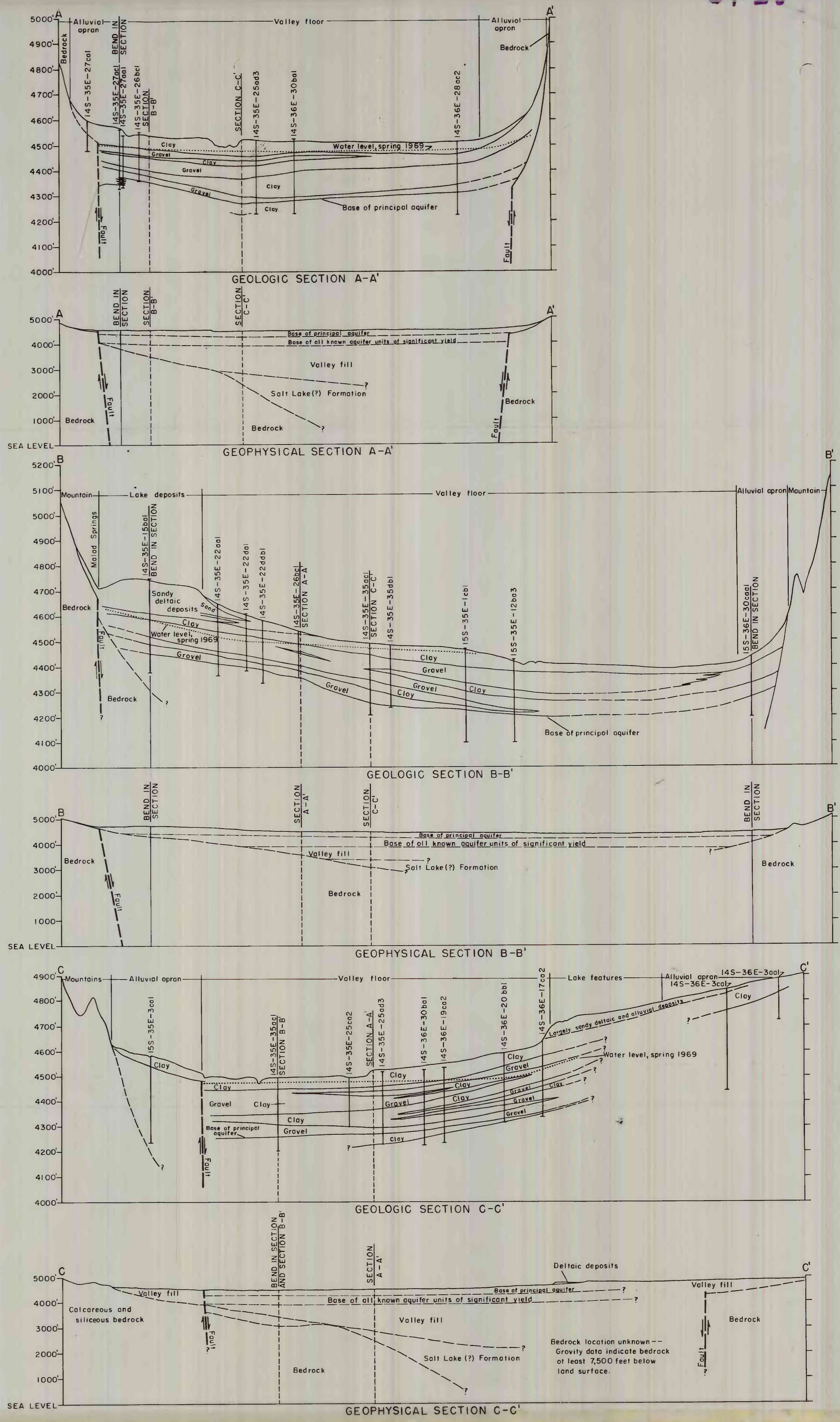
Base from U.S. Geological Survey 1:24,000 Preliminary prints, Malad City, 1SW, 2SE, 2SW, 3NE, 3NW, 3SE, 3SW, 4NW, and 4SW, Idaho, 1968.

0 1 2 3 4 MILES

CONTOUR INTERVAL 20 FEET  
DATUM IS MEAN SEA LEVEL

Geology compiled from unpublished mapping by R.L. Nace, modified by W.L. Burnham, 1969.

FIGURE 2.-- Generalized geology of the Malad Valley in Idaho.



Bedrock location unknown --  
Gravity data indicate bedrock  
of least 7,500 feet below  
land surface.