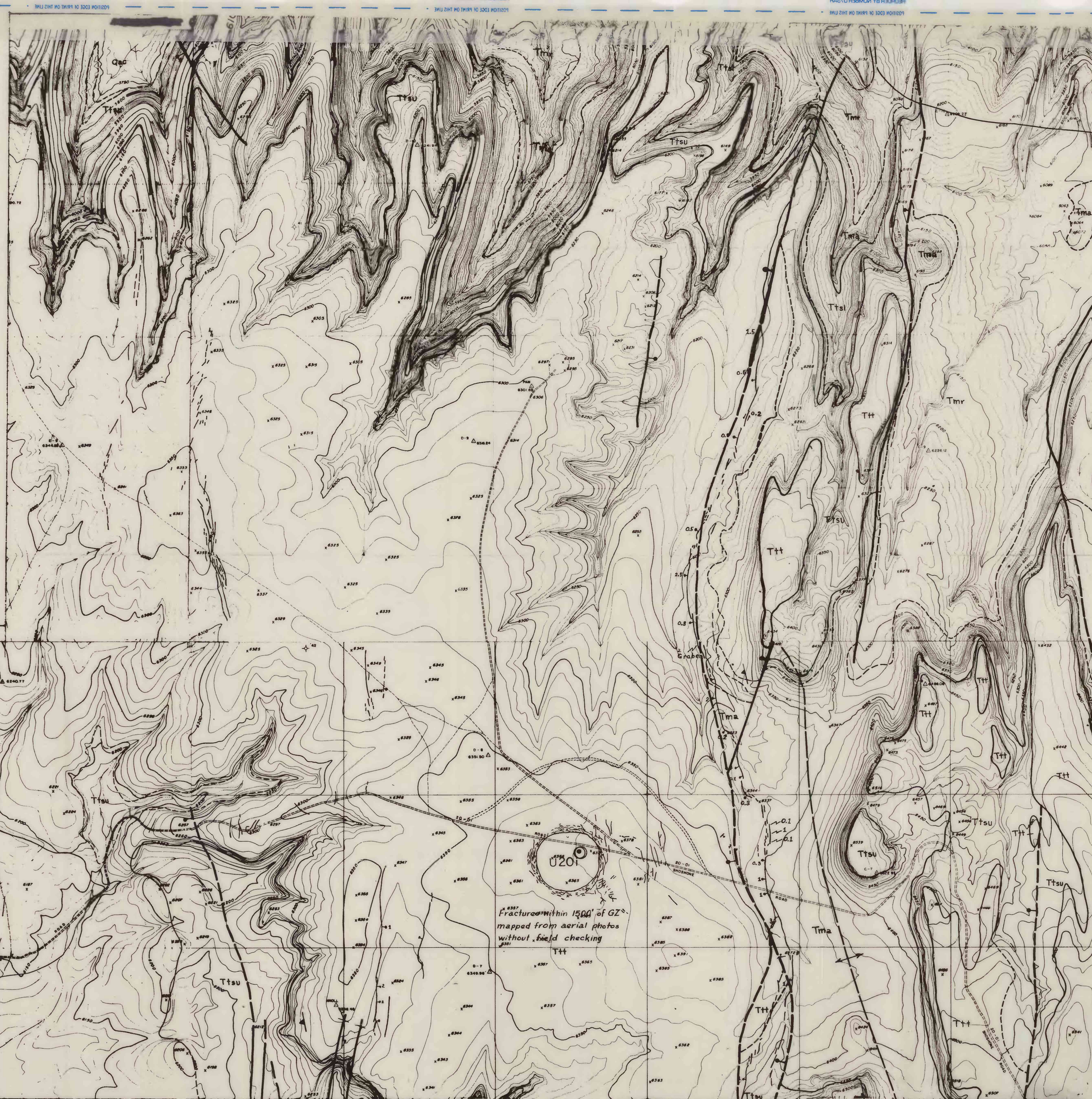


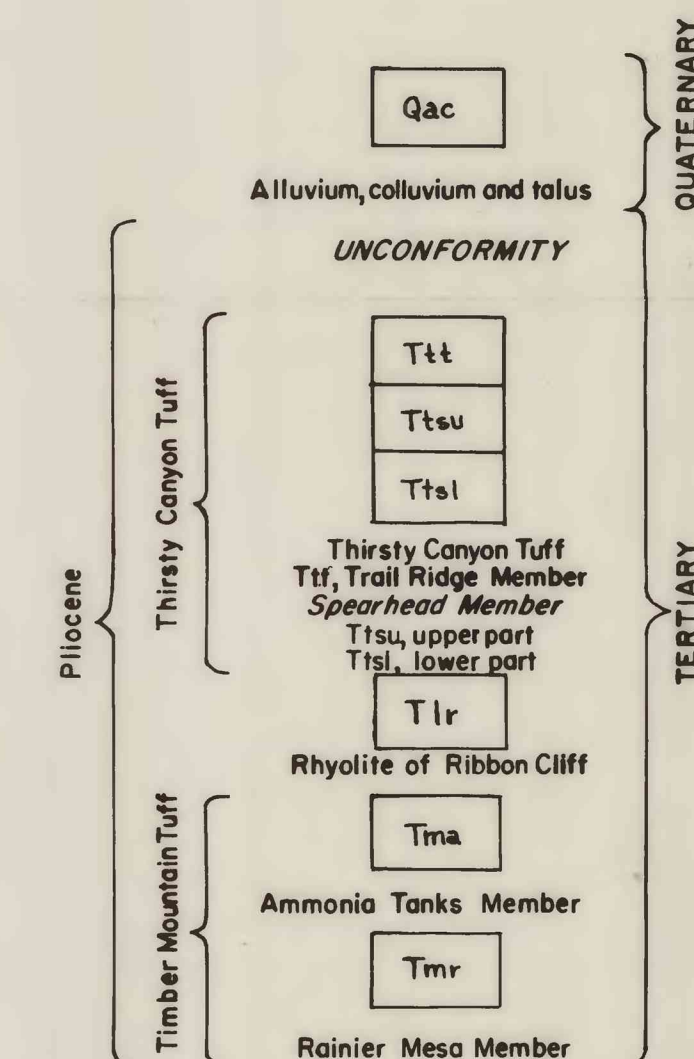
FIGURE 2A.-MAP SHOWING FRACTURES PRODUCED BY BOXCAR EVENT (NORTH 1/2)

0 2000 FEET

LIBRARY PROPERTY
Special Projects Branch



EXPLANATION



Contact
Dashed where approximately located

Fault
Dashed where approximately located,
dotted where concealed; bar and ball
on downthrown side

Anticline
Showing trace of axial plane and direction
of plunge of axis. Dashed where ap-
proximately located. The anticlines are
believed to be formed over buried
topographic highs and are not products
of compressive forces

Explosion-produced fractures;
showing direction and amount of
relative movement in feet.

Explosion-produced fractures;
Bar and ball on downthrown side, number
shows amount of displacement, in feet

GZ
Ground Zero

Fractures mapped by F. A. McKeown, G. E.
Brethauer, D. D. Dickey, W. L. Ellis, W. H. Lee

Geology from work of E. B. Ekren, R. E. Anderson,
P. P. Orkild, E. N. Hinrichs, R. L. Christiansen, and
D. C. Noble