

U. S. GEOLOGICAL SURVEY
WATER RESOURCES DIVISION
GAMMA LOG

Owner or Field No. HTA No. 2 White Sands
Project Name
Geological Survey No.
State County
Location 21 S 04 E 11 333
Depth Datum: 1 SW 1/4 Sec. 11 T21 S R 04 E
is ft. (above, below) land surface.

Casing Data
Casing: Diam. in. ft. to ft. Thickness in.
Diam. in. ft. to ft. Thickness in.
Bore: Diam. in. ft. to ft.
Diam. in. ft. to ft.
Diam. in. ft. to ft.

Filter: Type Thickness Characteristics,
ft. to
ft. to

Perforations, Screen: Type, size
ft. to
ft. to

Water Level 67 ft. (above, below) 1st
surface. Shut-in head after ft. (above, below)
Date Dec 1, 1966

Total Depth 187 ft. Interval Logged 6 ft. to
187 ft.

Fluid in hole: water Characteristics
Fluid level ft. Fluid Temperature °F.
Date Date

Water: Temperature °F. at Field Cond.
Ra (u c/L) Beta-Gamma (u c/L) U(10-3 gr/l)

Remarks

Radiation Intensity Increase → Depth Scale: 20 ft./in.

U. S. Geological Survey
Water Resources Division
NEUTRON LOG

Owner or Field No. HTS No. 1 White Sands
Project Name
U.S.G.S. No. Town
State County or Parish
Location 21 S 04 E 23 411
1 NW 1/4 NW 1/4 NW 1/4 Sec. 23 T 21 S R 04 E

Depth Datum: ft. (above, below) land surface.
is ft. (above, below) land surface.

Altitude: MP ft. Land surface 5,018.23 ft.
Determined by

Operator(s) Hudson-Doty
Equipment Date 11-30-66
Vehicle No.

HOLE LOGGING DATA
Casing: Diam. in. ft. to ft. Thickness in.
Diam. in. ft. to ft. Thickness in.
Diam. in. ft. to ft. Thickness in.
Bore: Diam. in. ft. to ft.
Diam. in. ft. to ft.
Diam. in. ft. to ft.

FLUID DATA
Type: water
Density, lbs./gal.
Viscosity, sec.
Resistivity, ohms:
Resistivity, B.H.T., ohms: pH:
Circ.Temp.: B.H.Temp.:
Remarks: Sensitivity and base change at water level

OPERATION DATA
Run No. 1 of 1 runs. Logging Speed: 50 ft./min.
Vertical Scale 20 ft./in.
Source 3 curries AM-BE Spacers 17 in.
Horz. Scale 8 T.C. 2 sec.
Sens. Scale 2.00 2.00 Base Scale 0.00 9.70

U. S. GEOLOGICAL SURVEY
WATER RESOURCES DIVISION
GAMMA LOG

Owner or Field No. HTA No. 1 White Sands
Project Name
Geological Survey No.
State County
Location 21 S 04 E 23 411
1 NW 1/4 NW 1/4 SE 1/4 Sec. 23 T 21 S R 04 E

Depth Datum: ft. (above, below) land surface.
is ft. (above, below) land surface.

Altitude: MP ft. Land surface 5018.23 ft.
Determined by

Operator(s) Hudson-Doty
Equipment (Vehicle No.) Date

Logging Data
Run No. 1 or 1 runs. Probe Sensitivity (High
Descent: ft./min. Gamma-Ray circuit scale
Potential circuit scale Time constant
Logged out: 50 ft./min. Gamma-Ray circuit scale 8
Potential circuit scale 0.70 Time constant 2

Statistical Variation 1 in. at 200 ft. Meter Reading
G-R Scale Time Constant

Calibration in hole: (G-R Scale Pot.circ.scale)
Depth (ft.) Obs. Time (min.) Meter Reading

Run No. 1 of 1 runs. Logging Speed: 50 ft./min.
Vertical Scale 20 ft./in.
Source 3 curries AM-BE Spacers 17 in.
Horz. Scale 8 T.C. 2 sec.
Sens. Scale 1.70 Base Scale 1.00 9.40

Radiation Intensity Increase → Depth Scale: 20 ft./in.

U. S. Geological Survey
Water Resources Division
NEUTRON LOG

Owner or Field No. HTA No. 2 White Sands
Project Name
U.S.G.S. No. Town
State County or Parish
Location 21 S 04 E 11 333
1 SW 1/4 SW 1/4 SW 1/4 Sec. 11 T21 S R 04 E

Depth Datum: ft. (above, below) land surface.
is ft. (above, below) land surface.

Altitude: MP ft. Land surface 5437.30 ft.
Determined by

Operator(s) Hudson-Doty
Equipment Date
Vehicle No.

HOLE LOGGING DATA
Casing: Diam. in. ft. to ft. Thickness in.
Diam. in. ft. to ft. Thickness in.
Diam. in. ft. to ft. Thickness in.
Bore: Diam. in. ft. to ft.
Diam. in. ft. to ft.
Diam. in. ft. to ft.

FLUID DATA
Type: Water
Density, lbs./gal.
Viscosity, sec.
Resistivity, ohms:
Resistivity, B.H.T., ohms: pH:
Circ.Temp.: B.H.Temp.:
Remarks: Base - 1.00 above water level

OPERATION DATA
Run No. 1 of 1 runs. Logging Speed: 50 ft./min.
Vertical Scale 20 ft./in.
Source 3 curries AM-BE Spacers 17 in.
Horz. Scale 8 T.C. 2 sec.
Sens. Scale 1.70 Base Scale 1.00 9.40

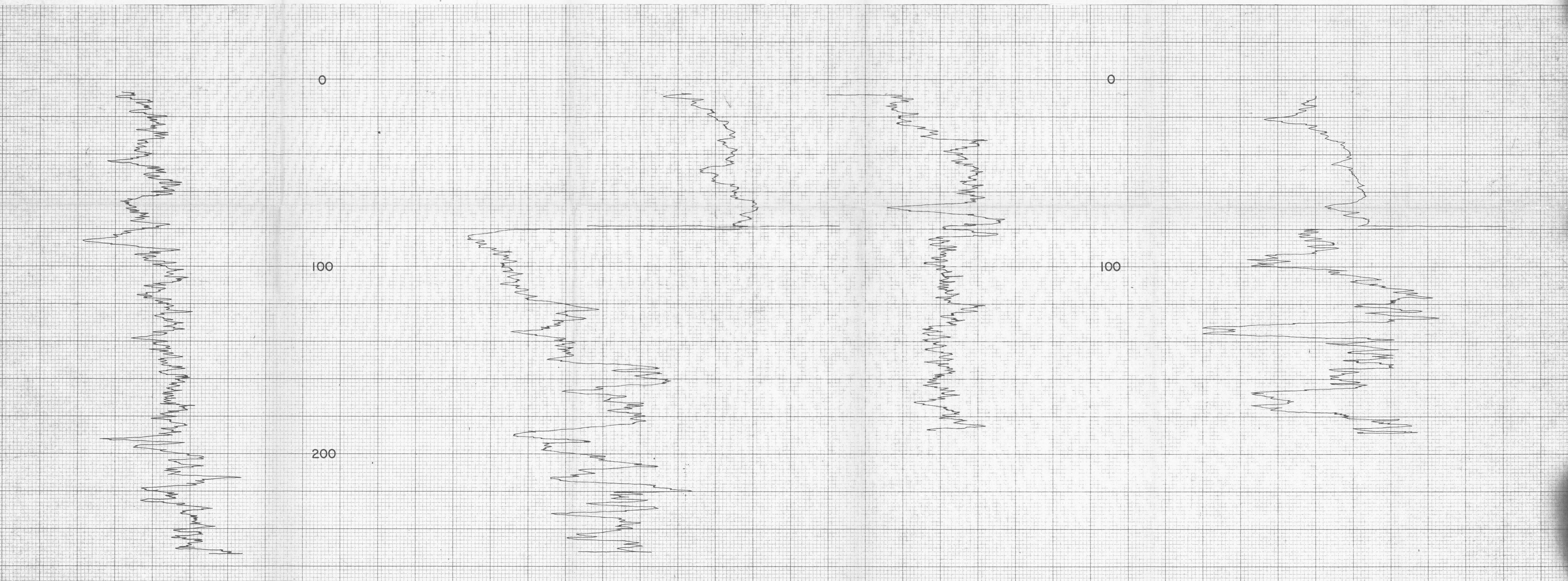


Figure 3.-- Gamma and neutron logs of test wells HTA-1 and HTA-2.