



EXPLANATION

j

JACOBSVILLE SANDSTONE

f

FREDA SANDSTONE

n

NONESUCH SHALE

c

COPPER HARBOR CONGLOMERATE

u

UNNAMED FORMATION

pf

PORPHYRITIC FELSITE  
May be extrusive basal unit of unnamed formation, or may be sill-like intrusion

dg

DIABASE-GRANOPHYRE COMPLEX

pl

pla

plf

plu

plmh

pl?

PORTAGE LAKE LAVA SERIES

pla - Allouez (No. 15) Conglomerate

plf - Forest (No. 8) Conglomerate

plu - unnamed conglomerate bed

plmh - unit causing magnetic high

SYMBOLS

Outcrop or area of closely spaced outcrops

Geologic boundary  
Long dash where approximately located; short dash indicates inferred contact

Geologic boundary based on aeromagnetic data

Fault  
Long dash where approximately located; short dash indicates inferred fault

Fault, location based on aeromagnetic data

Strike and dip of beds or flows

Prospect pit

Adit

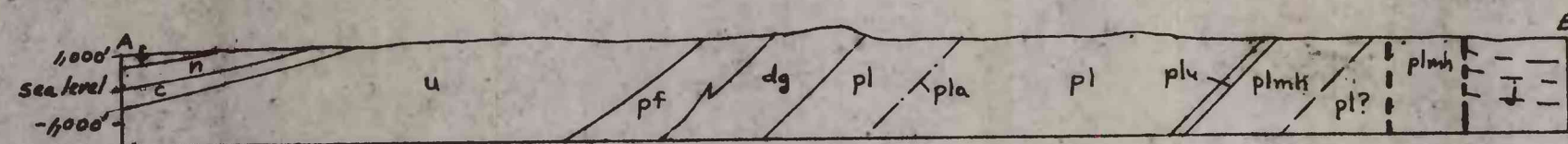
M5

Drill hole  
Number shown where mentioned in text

Geology by R.F. Johnson, 1967-1968;  
W.S. White and J.C. Wright, 1951, 1964

This map is preliminary and has not been edited for conformity with Geological Survey format and nomenclature.

BEDROCK GEOLOGY OF THE MATCHWOOD QUADRANGLE, MICHIGAN



U.S. GEOLOGICAL SURVEY  
LIBRARY  
JUL 15 1969  
DENVER

POCKET  
VOLUME