

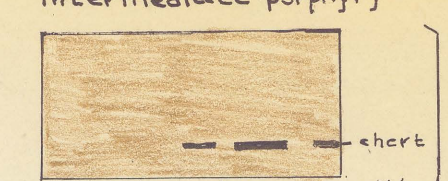
EXPLANATION

(Names in parentheses refer to formations at Lead, South Dakota.)
Paleozoic formations (Pz)
Precambrian rocks

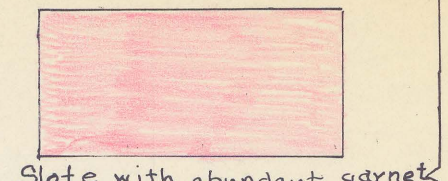
UNCONFORMITY



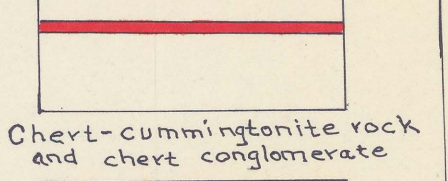
Intrusive meta gabbro and intermediate porphyry



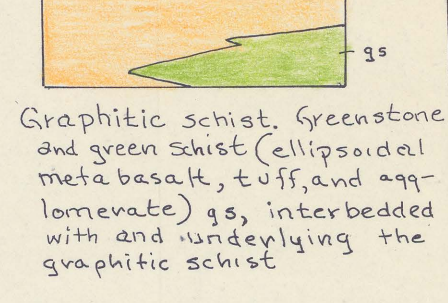
Graywacke, slate, graphitic slate, chert



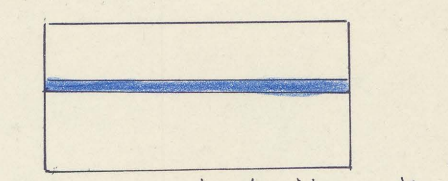
Slate with abundant garnet



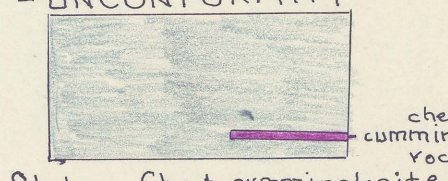
Chert-cummingtonite rock and chert conglomerate



Graphitic schist, greenstone and green schist (ellipsoidal meta basalt, tuff, and agglomerate) g.s., interbedded with and underlying the graphitic schist



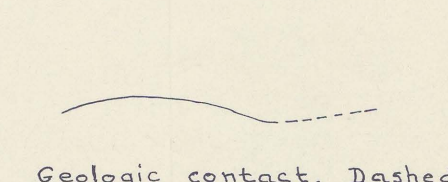
Chert-cummingtonite rock



Slate



Quartzite and banded slate (ELLISON)



Geologic contact. Dashed where approximately located or inferred

Tops of graded beds

Tops of lava pillows

Strike and dip of beds (No top direction implied)

Strike of vertical beds

Strike and dip of overturned beds

Strike and plunge of plicated beds

Strike and dip of foliation

Strike of vertical foliation

Direction and degree of plunge of lineation

FOLDS

Anticlines

Synclines

Arrows indicate direction of plunge and dip of limbs

Refolded, overturned anticline

Minor plunging anticline

Minor plunging syncline

FAULTS

Inferred faults

Letters and arrows indicate relative movement

Test pit

Test trench

adit

Open pit mine

Inactive gold mine

Trend of magnetic anomaly

INDEX MAP

DEADWOOD

LAWRENCE CO. PENNINGTON CO.

ROCHFORD

MEADE CO.

RAPID CITY

Scale

0 1 2 MILES

0 1000 2000 3000 4000 5000 6000 7000 8000 9000 10000

Scale

0 1 2 MILES

0 1000 2000 3000 4000 5000 6000 7000 8000 9000 10000

Scale

0 1 2 MILES

0 1000 2000 3000 4000 5000 6000 7000 8000 9000 10000

Scale

0 1 2 MILES

0 1000 2000 3000 4000 5000 6000 7000 8000 9000 10000

Scale

0 1 2 MILES

0 1000 2000 3000 4000 5000 6000 7000 8000 9000 10000

Scale

0 1 2 MILES

0 1000 2000 3000 4000 5000 6000 7000 8000 9000 10000

Scale

0 1 2 MILES

0 1000 2000 3000 4000 5000 6000 7000 8000 9000 10000

Scale

0 1 2 MILES

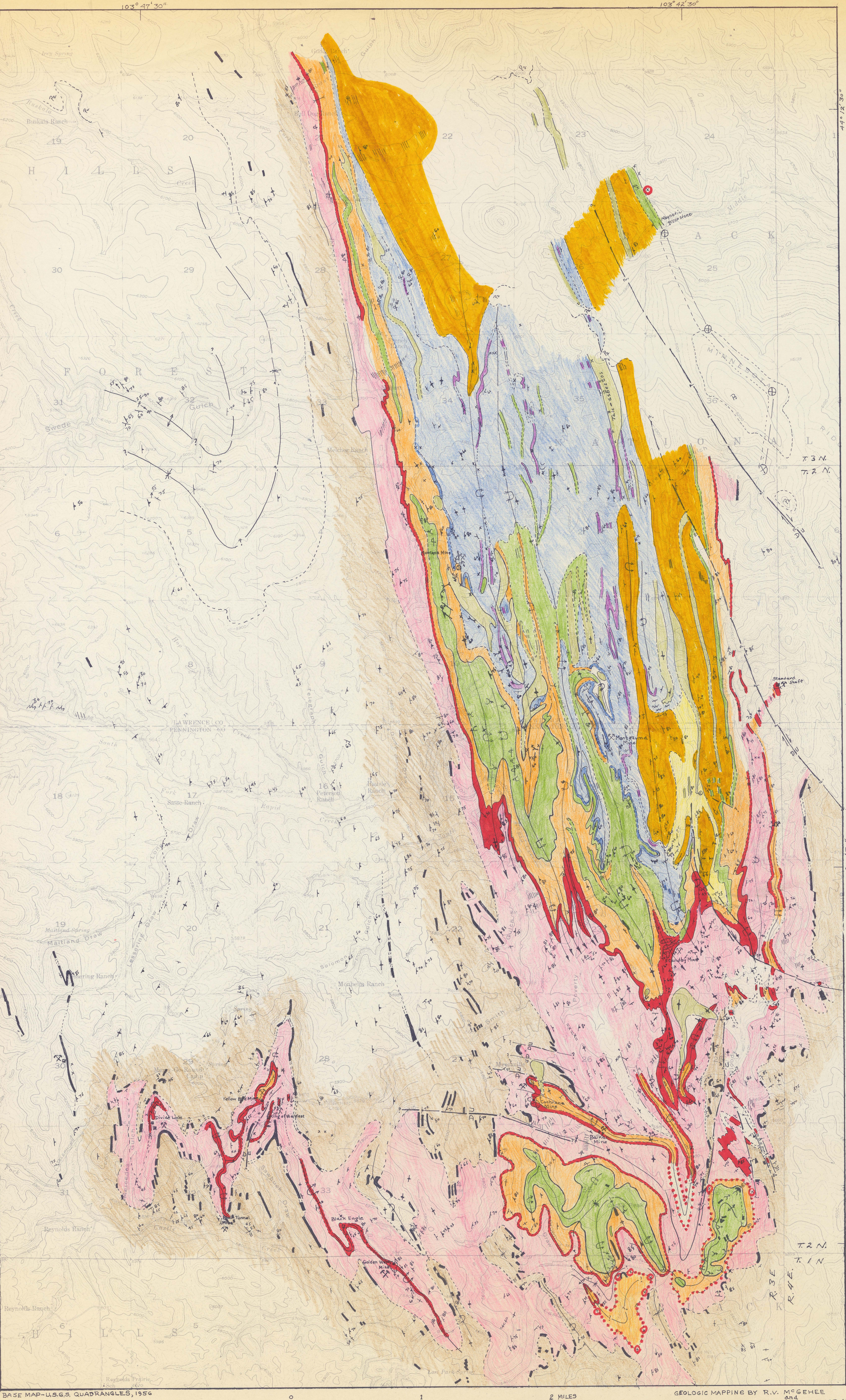
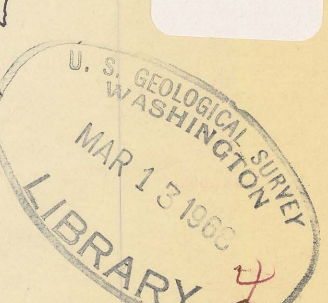
0 1000 2000 3000 4000 5000 6000 7000 8000 9000 10000

Scale

0 1 2 MILES

0 1000 2000 3000 4000 5000 6000 7000 8000 9000 10000

M(200)
R290
no. 69-
155
sheet 1 of 2
C.1



BASE MAP-U.S.G.S. QUADRANGLES, 1956

GEOLOGIC MAPPING BY R.V. MCGEEHEE and R.W. BAYLEY, 1967-68

South Dakota (Rochford district). Geol. 1:24,000. 1967.

sheet 1, cap. 1.

A PRELIMINARY GEOLOGIC MAP OF THE ROCHFORD DISTRICT
BLACK HILLS, SOUTH DAKOTA

THIS MAP IS PRELIMINARY AND HAS NOT BEEN EDITED OR REVIEWED FOR CONFORMITY WITH U.S. GEOLOGICAL SURVEY STANDARDS AND NOMENCLATURE.