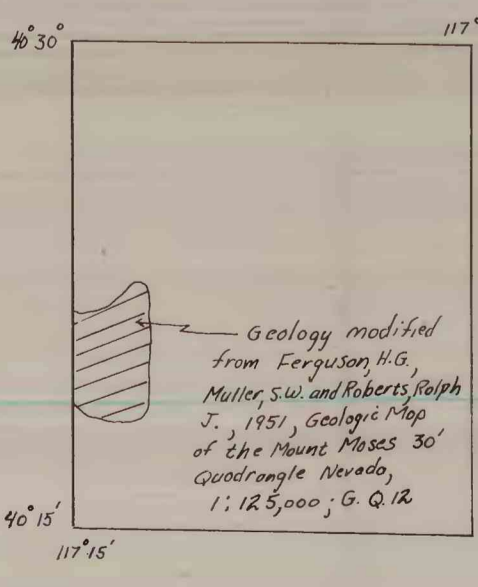
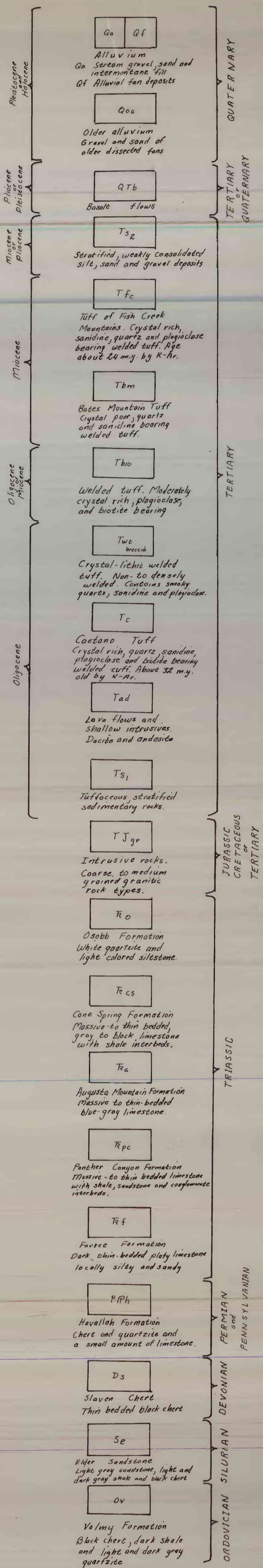


EXPLANATION



- Contact
Dashed where approximately located
dotted where concealed.
- Fault
Dashed where approximately located
dotted where concealed. D on downthrown side, u on upthrown side.
- Thrust fault
Dashed where approximately located, saw teeth on upper plate.
- Fault scarp
Dashed where approximately located
Hachures on downthrown side
- Strike and dip of beds
- Horizontal bedding

The McCoy Quadrangle central Lander County, Nevada; Open File

PLEASE
IN BACK