

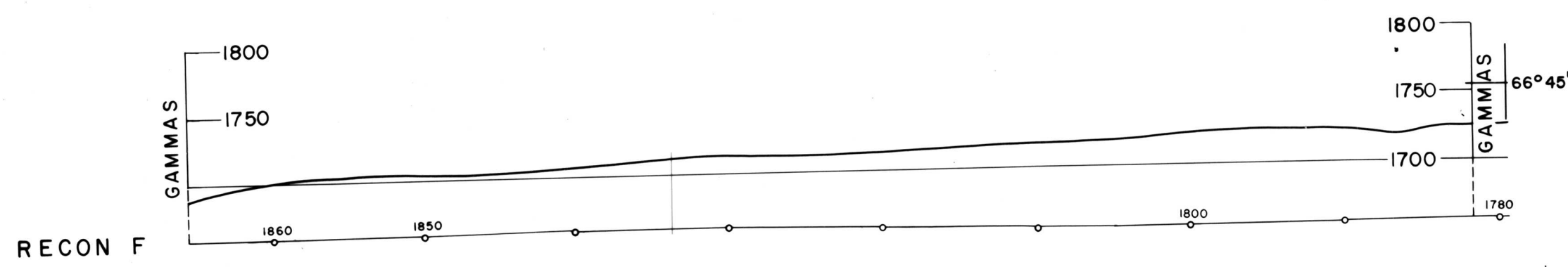
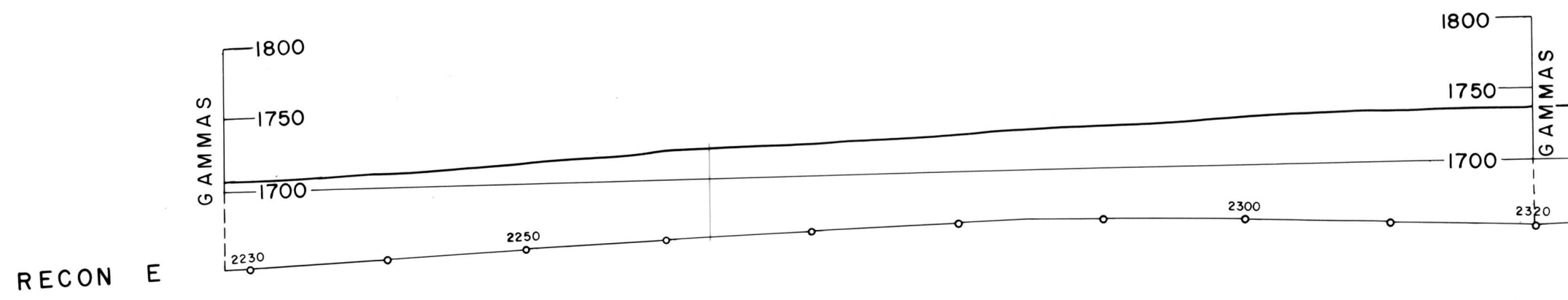
67°00' 162°30'

162°00'

162°30' 67°00'

66°45'

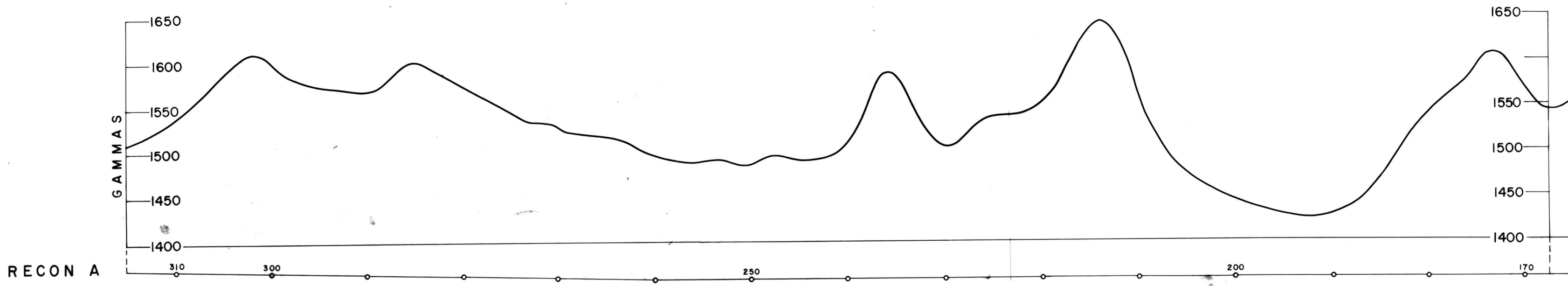
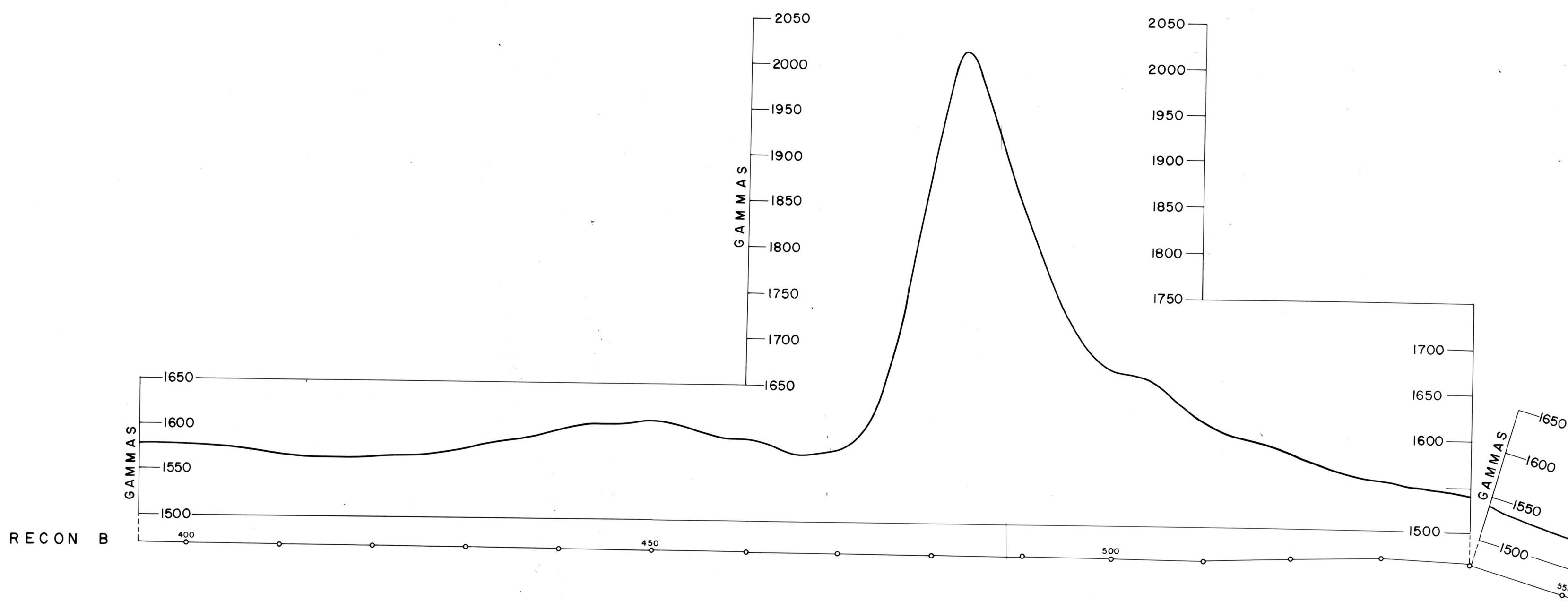
+



66°30'

+

66°30'

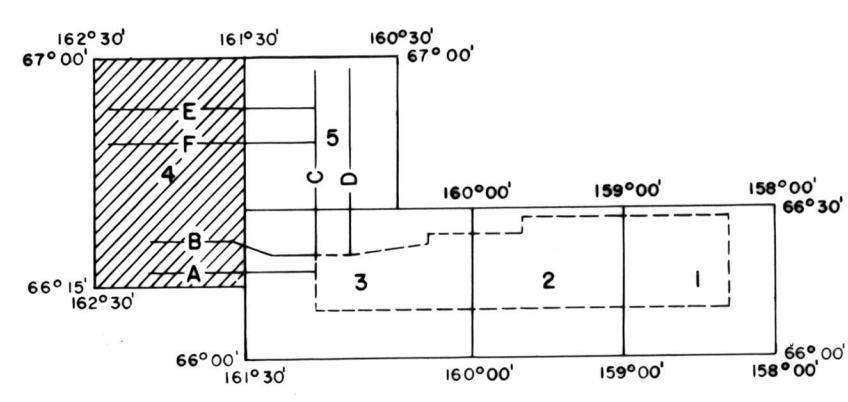


66°15' 162°30'

162°00'

162°30' 66°15'

HORIZONTAL SCALE ----- 1:63,360
VERTICAL SCALE ON RECONNAISSANCE PROFILES AS SHOWN
RECONNAISSANCE ALTITUDE ----- 500' AMT
FLIGHT LINE ----- RECON-A
MAGNETICS BASED ON ARBITRARY DATUM
REGIONAL MAGNETIC GRADIENT NOT REMOVED
ESTIMATED TOTAL INTENSITY OF FIELD: 55,500 GAMMAS
MEAN INCLINATION: + 77°



HOGATZA TREND ALASKA
FIGURE 3, SHEET NUMBER 4
LKB 1968

U. S. Geological Survey
OPEN FILE REPORT
This report is preliminary and has
not been edited or reviewed for
conformity with Geological Survey
standards and nomenclature.