

(200)  
R290  
no. 1271

U.S. GEOLOGICAL SURVEY  
LIBRARY  
JUL 14 1969  
DENVER

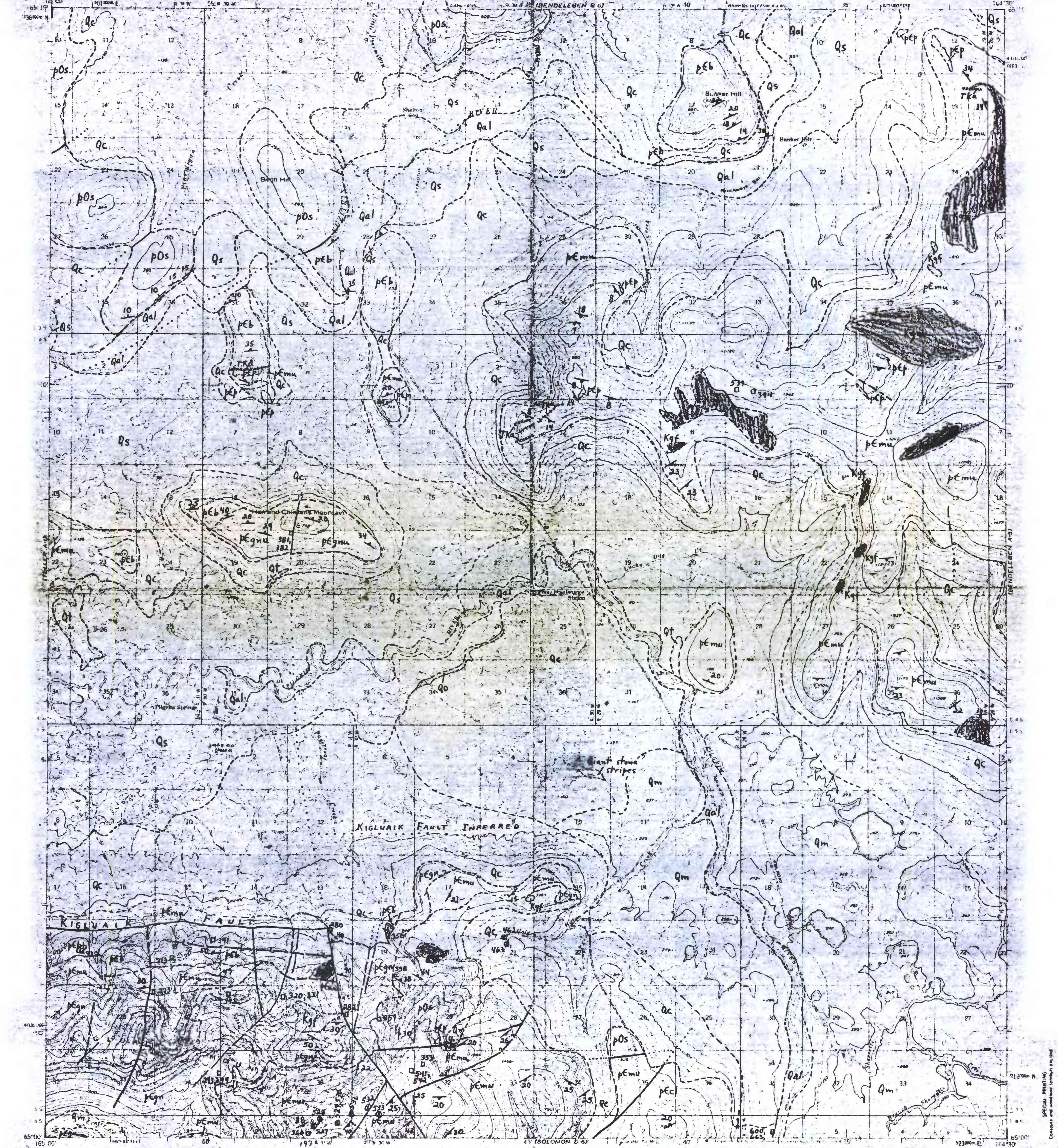
69-236

UNITED STATES  
DEPARTMENT OF THE INTERIOR  
GEOLOGICAL SURVEY

UNITED STATES  
DEPARTMENT OF THE ARMY  
CORPS OF ENGINEERS

BENDELEBEN (A-6) QUADRANGLE  
ALASKA  
1:63 360 SERIES (TOPOGRAPHIC)

FINAL



Map by the Army Map Service  
Published for civil use by the Geological Survey  
Control by U.S. G.S. and U.S. G.S.  
Topography by stereogrammetric methods from aerial photographs  
taken 1950. Map not held checked  
Universal Transverse Mercator projection. 1927 North American Datum  
10,000 foot grid based on Alaska coordinate system, zone B  
1000 meter contour interval. Minor contour interval 200 feet  
Land areas represent unimproved and unmarked locations  
determined by the Bureau of Land Management  
Folio R-13, Kasilof River, Alaska

FOR SALE BY U.S. GEOLOGICAL SURVEY  
FAIRBANKS, ALASKA, DENVER 25, COLORADO OR WASHINGTON 25, D. C.  
A FOLDER DESCRIBING TOPOGRAPHIC MAPS AND SYMBOLS IS AVAILABLE ON REQUEST

ROAD CLASSIFICATION  
Light duty  
THIS MAP HAS NOT BEEN EDITED OR REVIEWED FOR CONFORMITY WITH U.S. GEOLOGICAL SURVEY STANDARDS  
BENDELEBEN (A-6), ALASKA  
1:63 360 SERIES (TOPOGRAPHIC)  
1950