

(200)
R29
no. 1271

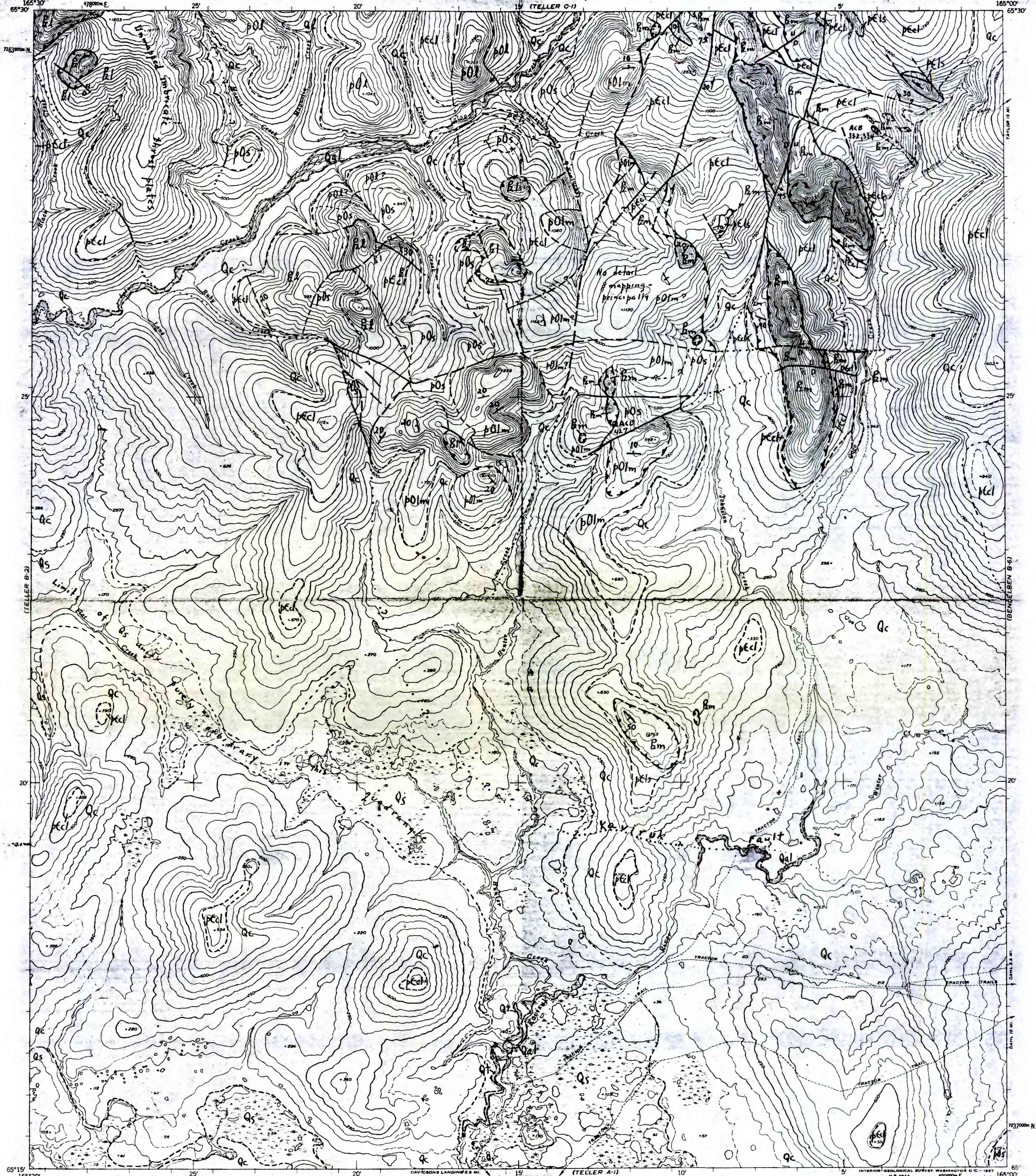
U.S. GEOLOGICAL SURVEY
LIBRARY
JUL 14 1969
DENVER

69-236

UNITED STATES
DEPARTMENT OF THE INTERIOR
GEOLOGICAL SURVEY

UNITED STATES
DEPARTMENT OF THE ARMY
CORPS OF ENGINEERS

TELLER (B-1) QUADRANGLE
ALASKA—SECOND JUDICIAL DIVISION
1:63360 SERIES (TOPOGRAPHIC)



Map by the Army Map Service
Published for civil use by the Geological Survey
Control by USGS, USC&GS, and USCE
Topography from aerial photographs by photogrammetric methods
Aerial photographs taken 1950. Map not field checked
Universal Transverse Mercator projection, zone 3
1927 North American datum
1000-meter Universal Transverse Mercator
grid ticks, zone 3, shown in blue
Unchecked elevations are shown in brown

SCALE 1:63360
3000 0 3000 6000 9000 12000 15000 18000 21000 FEET
1 2 3 4 5 KILOMETERS

CONTOUR INTERVAL 50 FEET
DASHED LINES REPRESENT 25-FOOT CONTOURS
DATUM IS MEAN SEA LEVEL

FOR SALE BY U.S. GEOLOGICAL SURVEY
FAIRBANKS, ALASKA DENVER 2, COLORADO WASHINGTON 25, D. C.
A FOLDER DESCRIBING TOPOGRAPHIC MAPS AND SYMBOLS IS AVAILABLE ON REQUEST



ROAD CLASSIFICATION
THIS MAP HAS NO CLAIM OF ACCURACY FOR UNPUBLISHED DATA
GEOLOGICAL SURVEY STANDARDS

TELLER (B-1), ALASKA
N6515-W16500/15x30
1950