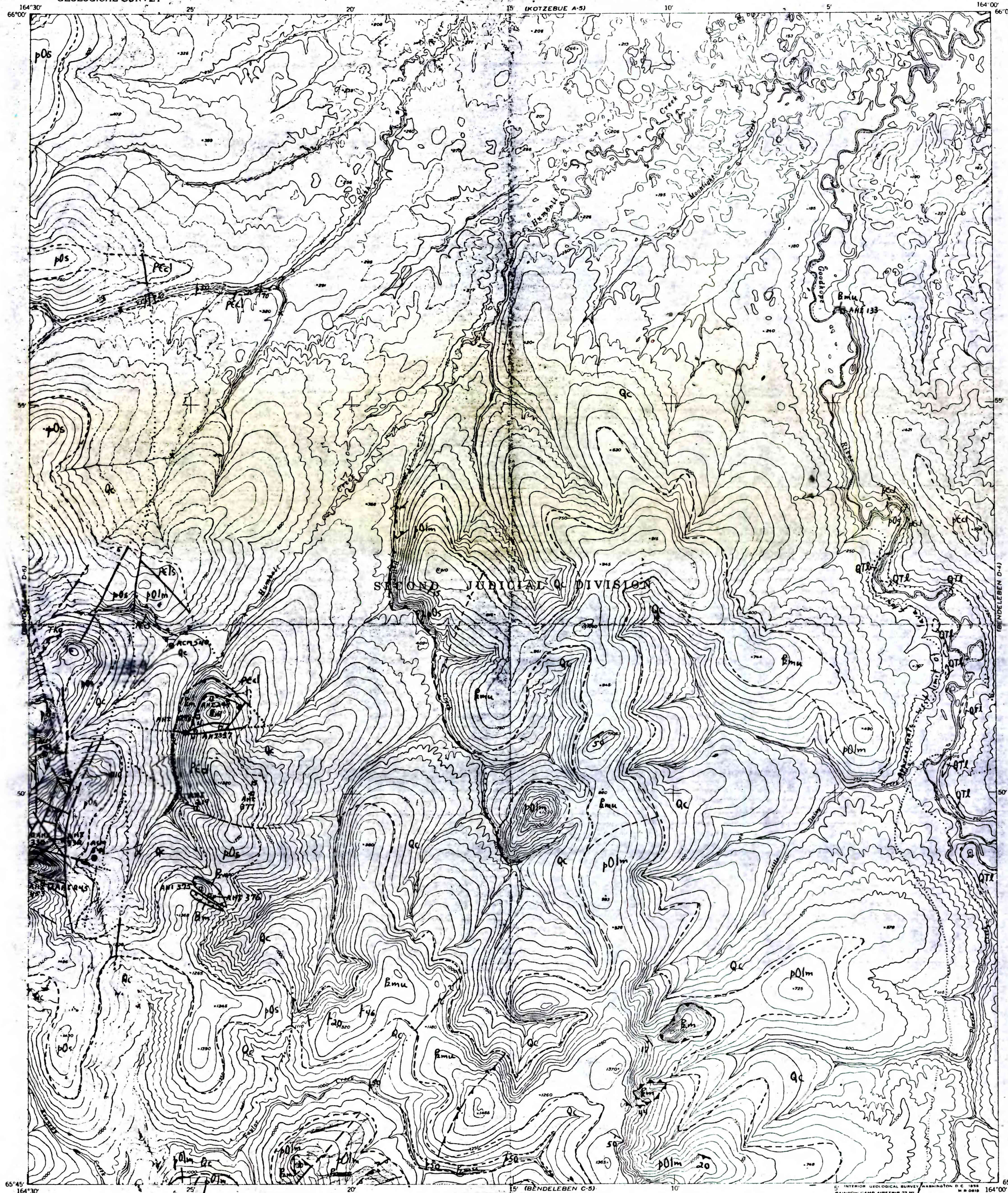


UNITED STATES
DEPARTMENT OF THE INTERIOR
GEOLOGICAL SURVEY

UNITED STATES
DEPARTMENT OF THE ARMY
CORPS OF ENGINEERS

BENDELEBEN (D-5) QUADRANGLE
ALASKA—SECOND JUDICIAL DIVISION
1:63 360 SERIES (TOPOGRAPHIC)



Mapped by the Army Map Service
Published for civil use by the Geological Survey
Control by USGS, USC&GS, and USCE

Topography from aerial photographs by photogrammetry. Aerial photographs taken 1950. Map not field checked

Universal Transverse Mercator projection, zone 3-
1927 North American datum

Unchecked elevations are shown in brown

Unchecked elevations are shown in brown.

ROAD CLASSIFICATION

| ALL WEATHER ROADS | | DRY WEATHER ROADS | |
|-------------------|------|-------------------|------|
| Hard surface | None | Improved dirt | None |
| Other | None | Unimproved dirt | None |
| Trail | None | | |

BENDELEBEN (D-5), ALASKA
N6545-W16400/15x30

1950

CONTOUR INTERVAL 50 FEET
DASHED LINES REPRESENT HALF-INTERVAL CONTOURS
DATUM IS MEAN SEA LEVEL

FOR SALE BY U. S. GEOLOGICAL SURVEY
FAIRBANKS, ALASKA FEDERAL CENTER, DENVER, COLORADO WASHINGTON 25, D. C.
A FOLDER DESCRIBING TOPOGRAPHIC MAPS AND SYMBOLS IS AVAILABLE ON REQUEST