

CHICKMAK A-1
Teller D-11

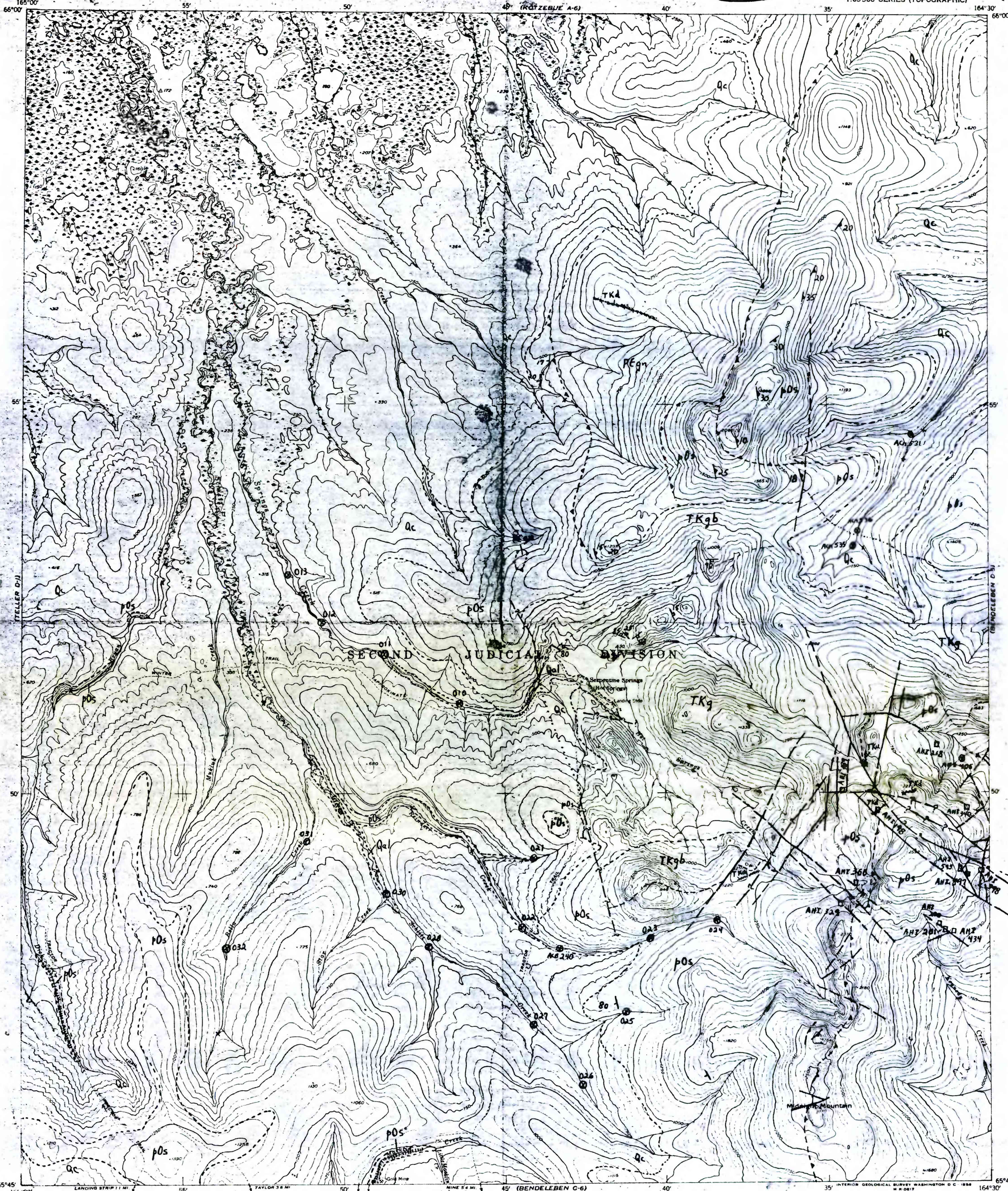
UNITED STATES
DEPARTMENT OF THE INTERIOR
GEOLOGICAL SURVEY

UNITED STATES
DEPARTMENT OF THE ARMY
CORPS OF ENGINEERS

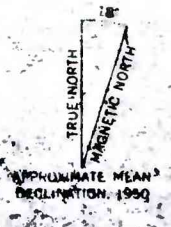
U.S. GEOLOGICAL SURVEY
LIBRARY
JUL 14 1969
DENVER

BENDELEBEN (D-6) QUADRANGLE
ALASKA - SECOND JUDICIAL DIVISION
1:63,360 SERIES (TOPOGRAPHIC)

KOTZEBUE A-5



Maped by the Army Map Service
Published for civil use by the Geological Survey
Control by USGS, USC&GS, and USCE
Topography from aerial photographs by photogrammetric methods
Aerial photographs taken 1950. Map not field checked
Universal Transverse Mercator projection, zone 3
1927 North American datum
Unchecked elevations are shown in brown.



CONTOUR INTERVAL 50 FEET
DASHED LINES REPRESENT HALF-INTERVAL CONTOURS
DATUM IS MEAN SEA LEVEL

FOR SALE BY U.S. GEOLOGICAL SURVEY
FAIRBANKS, ALASKA - FEDERAL CENTER, DENVER, COLORADO - WASHINGTON 25, D. C.
A FOLDER DESCRIBING TOPOGRAPHIC MAPS AND SYMBOLS IS AVAILABLE ON REQUEST.



ROAD CLASSIFICATION

ALL WEATHER ROADS		DRY WEATHER ROADS	
Hard-surface	None	Improved dirt	None
Other	None	Unimproved dirt	None
Trails			

BENDELEBEN (D-6), ALASKA
N6545-W16430/15x30

BENDELEBEN C-3