

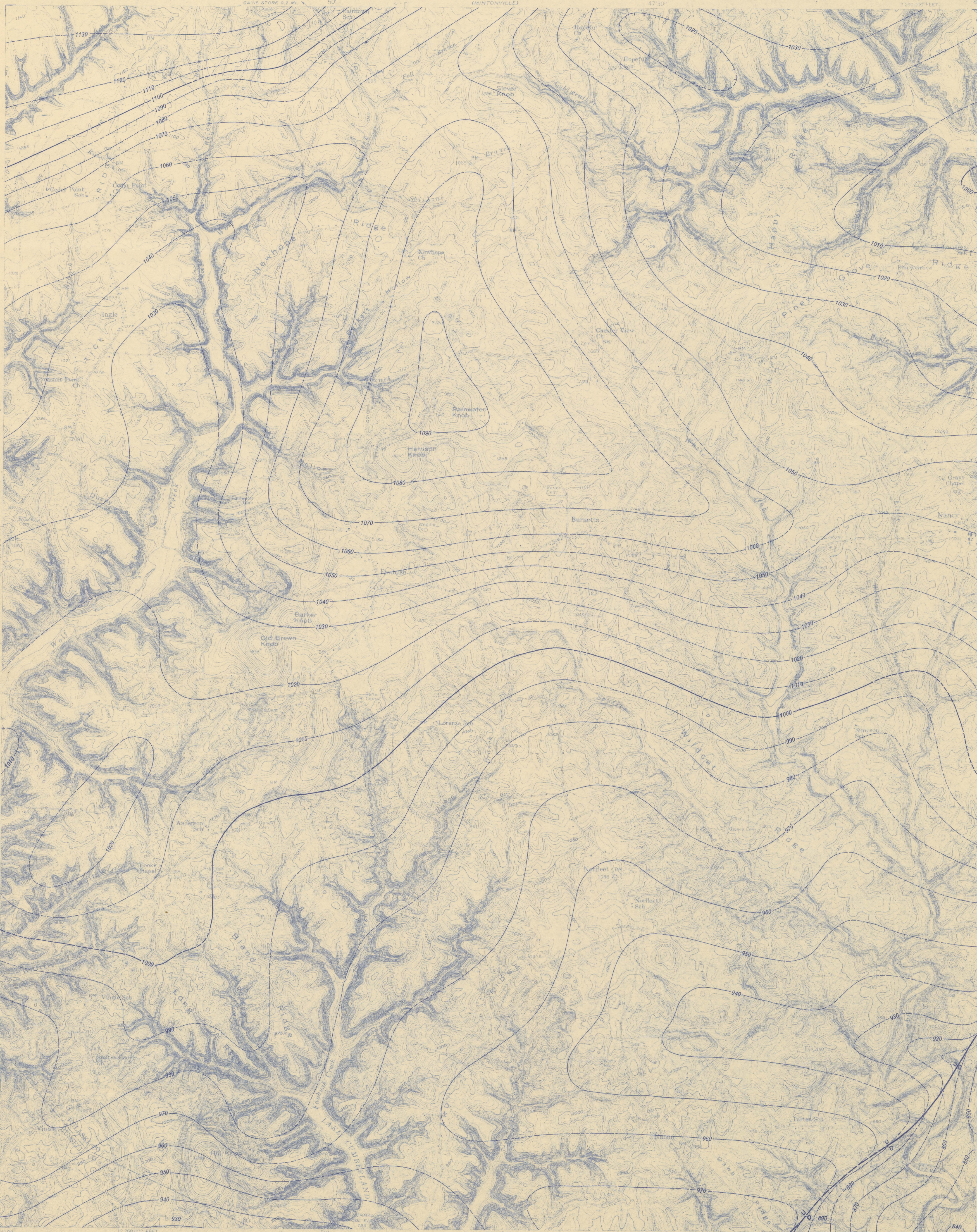
TOP  
TOP  
TOP

PREPARED IN COOPERATION WITH  
THE COMMONWEALTH OF KENTUCKY  
UNIVERSITY OF KENTUCKY  
KENTUCKY GEOLOGICAL SURVEY  
WALLACE W. HAGAN, DIRECTOR AND STATE GEOLOGIST  
STATE OF KENTUCKY  
AGRICULTURAL AND INDUSTRIAL DEVELOPMENT BOARD

U.S. Geological Survey  
OPEN FILE MAP  
This document has not been edited  
or reviewed for conformity with  
U. S. Geological Survey standards  
or nomenclature.

UNITED STATES  
DEPARTMENT OF THE INTERIOR  
GEOLOGICAL SURVEY

FAUBUSH QUADRANGLE  
KENTUCKY  
7.5 MINUTE SERIES (TOPOGRAPHIC)  
SECTION 4 CAINS STORE 15' QUADRANGLE



EXPLANATION

Fault  
Dashed where approximately located.  
U, upthrown side; D, downthrown side.

Drawn on base of Salem and Warsaw  
Formations. Short dashed where  
datum is above land surface. Hatchure  
indicate closed basin. Contour interval  
10 feet.

Maped, edited, and published by the Geological Survey  
Control by USGS and USCGS  
Topography from aerial photographs by stereophotogrammetric  
method. Aerial photographs taken 1951. Field check 1954.  
Projection: 1927 North American datum.  
10,000-foot grid based on Kentucky coordinate system,  
south zone.  
Lake Cumberland subject to controlled inundation to 700 feet.  
Unchecked elevations are shown in brown.

TRUE NORTH  
MAGNETIC NORTH  
APPROXIMATE MEAN  
DECLINATION, 1954

SCALE 1:24,000  
0 1000 2000 3000 4000 5000 6000 7000 8000 9000 10000 FEET  
0 1 2 3 4 5 6 7 8 9 10 KILOMETER  
CONTOUR INTERVAL 10 FEET  
CONTOUR IS MEAN SEA LEVEL

ROAD CLASSIFICATION  
Heavy duty ————— Light duty —————  
Medium duty ————— Unimproved dirt —————  
U.S. Route ————— St. route —————

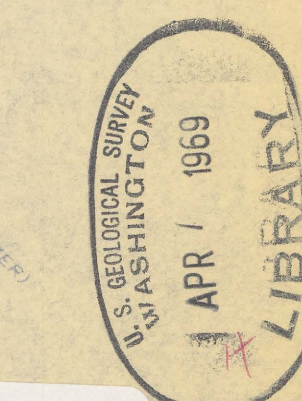
FAUBUSH, KY.  
SECTION 4 CAINS STORE 15' QUADRANGLE  
N3700-W8446/7.5  
1954

THIS MAP COMPLIES WITH NATIONAL MAP ACCURACY STANDARDS  
FOR SALE BY U. S. GEOLOGICAL SURVEY, WASHINGTON 25, D. C.  
AND KENTUCKY AGRICULTURAL AND INDUSTRIAL DEVELOPMENT BOARD, FRANKFORT, KENTUCKY  
A FOLDER DESCRIBING TOPOGRAPHIC MAPS AND SYMBOLS IS AVAILABLE ON REQUEST

PRELIMINARY STRUCTURE MAP OF THE FAUBUSH QUADRANGLE, SOUTH-CENTRAL KENTUCKY

By  
Robert E. Thaden and Richard Q. Lewis, Sr.  
1969

Kentucky (Faubush quad.). Structure. 1:24,000. 1969.  
sep. 1.



M(200)  
R290  
no. 69-277  
C.1

