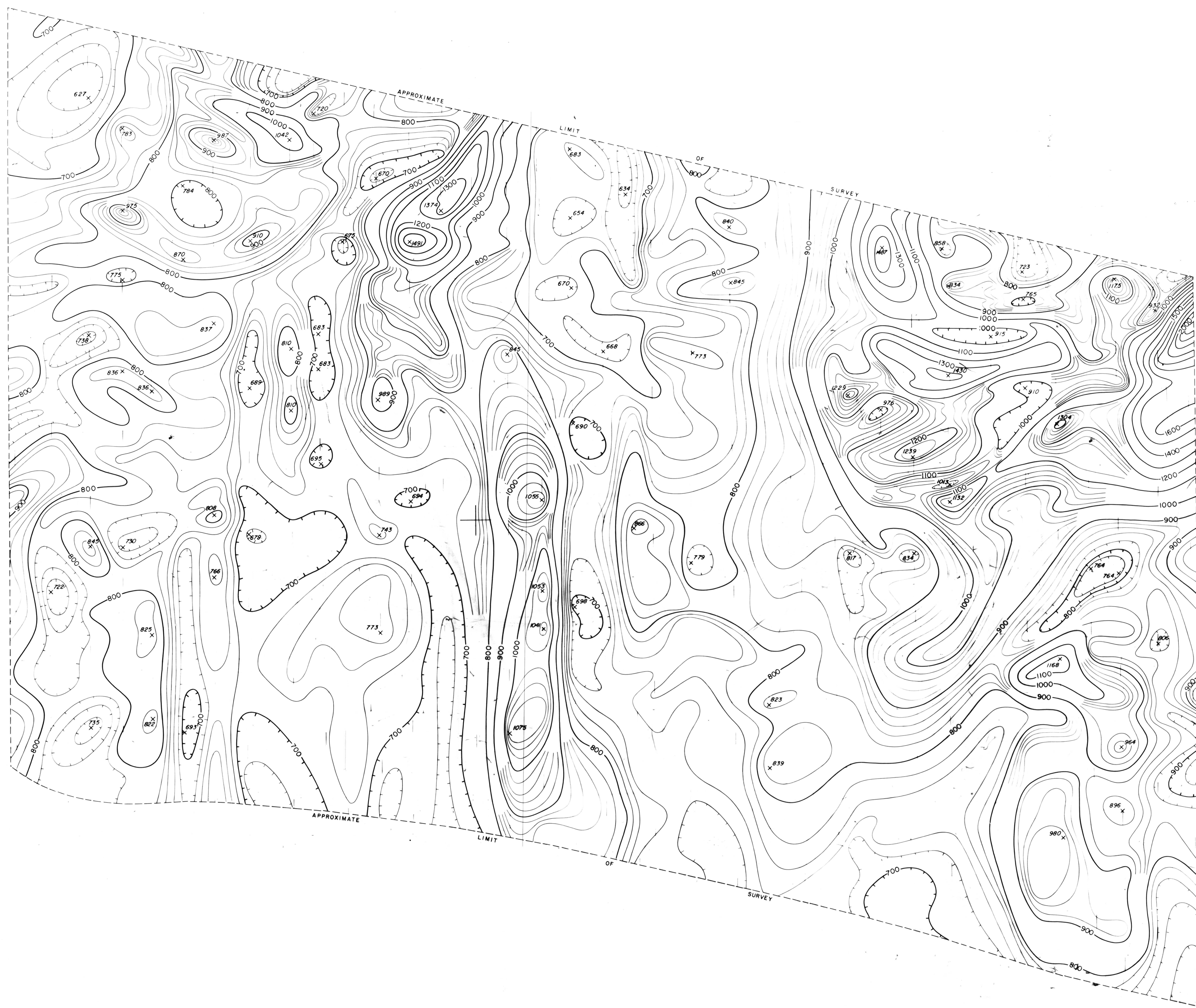


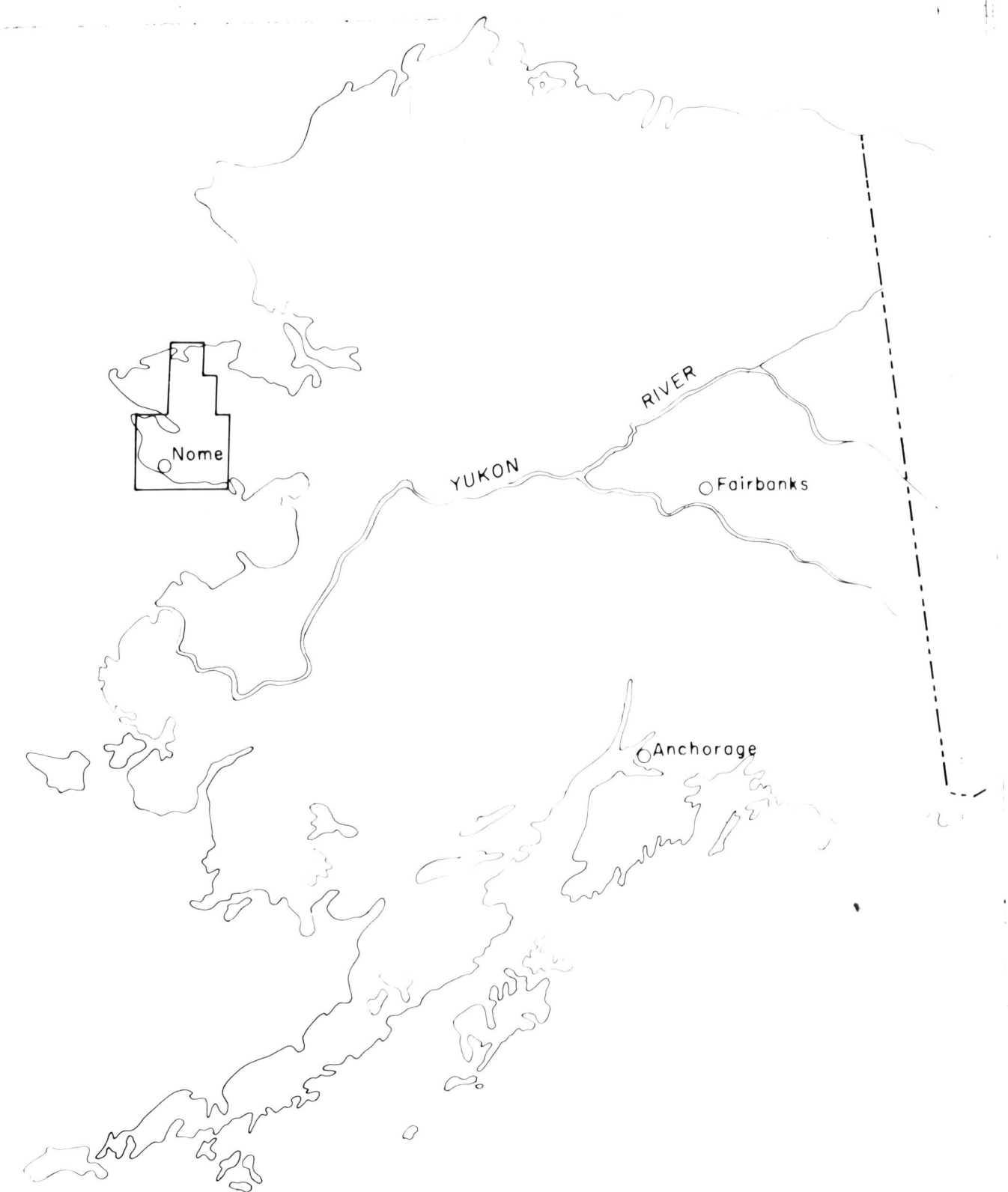
166°00'
64°55'

165°45'

165°30'
64°35'

64°30'

64°30'

100 0 100 200 300 miles
Scale

INDEX MAP OF ALASKA SHOWING LOCATION OF SEWARD PENINSULA AIRBORNE GEOPHYSICAL SURVEYS, 1968. SEE DETAILED INDEX FOR ACTUAL COVERAGE.

AIRBORNE GEOPHYSICAL SURVEYS IN SEWARD PENINSULA AREA, ALASKA

0 1 2 MILES
0 5,000 10,000 FEET

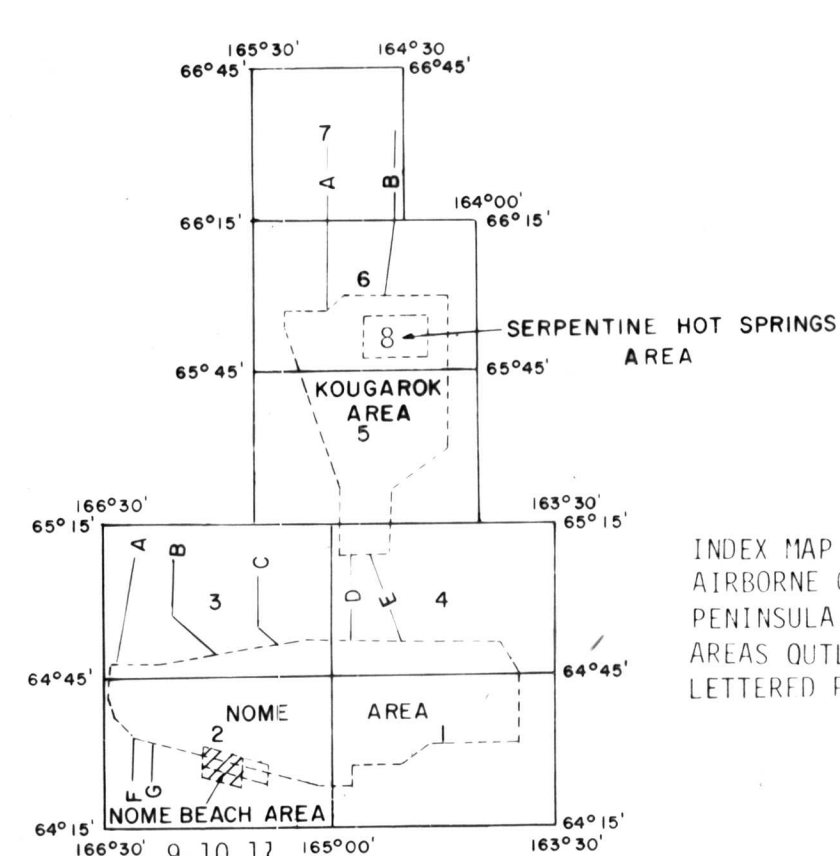
1969

165°45'

64°25'

166°00'

HORIZONTAL SCALE ----- 1:24,000
 CONTOUR INTERVAL ----- 20 GAMMA
 50 GAMMA CONTOUR -----
 100 GAMMA CONTOUR -----
 MAGNETIC LOW -----
 MAGNETIC MAXIMUM/MINIMUM ----- X 547
 SURVEY ALTITUDE ----- 200' ASL
 FLIGHT LINE -----
 OFFSHORE NAVIGATION BY DOPPLER RADAR
 MAGNETICS BASED ON ARBITRARY DATUM
 REGIONAL MAGNETIC GRADIENT NOT REMOVED
 ESTIMATED TOTAL INTENSITY OF FIELD: 55,000 GAMMAS
 MEAN INCLINATION: +75°



INDEX MAP SHOWING DETAILED LOCATION OF AIRBORNE GEOPHYSICAL SURVEYS IN SEWARD PENINSULA, 1968. COVERAGE CONFINED TO AREAS OUTLINED BY DASHED LINES PLUS LETTERED PROFILES.

Flown and compiled by Lockwood, Kessler, and Bartlett, Inc., 1968.

AEROMAGNETIC MAP OF PART OF THE
 NOME BEACH ALASKA
 SHEET NUMBER 11 OF 11
 LKB 1968
 380

U.S. GEOLOGICAL SURVEY
Released to open fileThis map is preliminary
and has not been edited
or reviewed for conformity
to Geological Survey standards