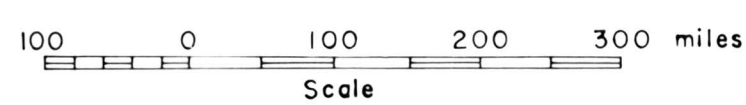
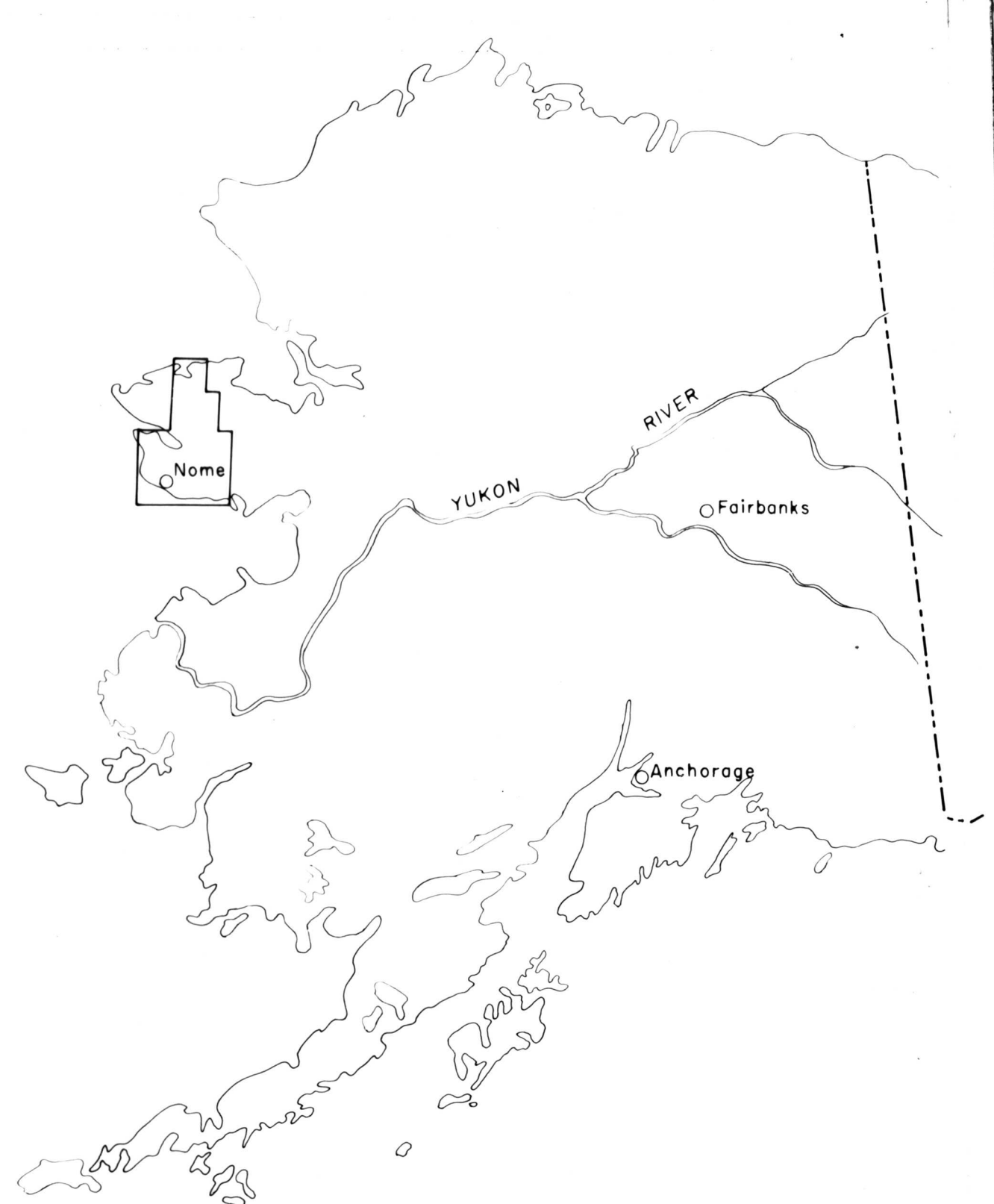
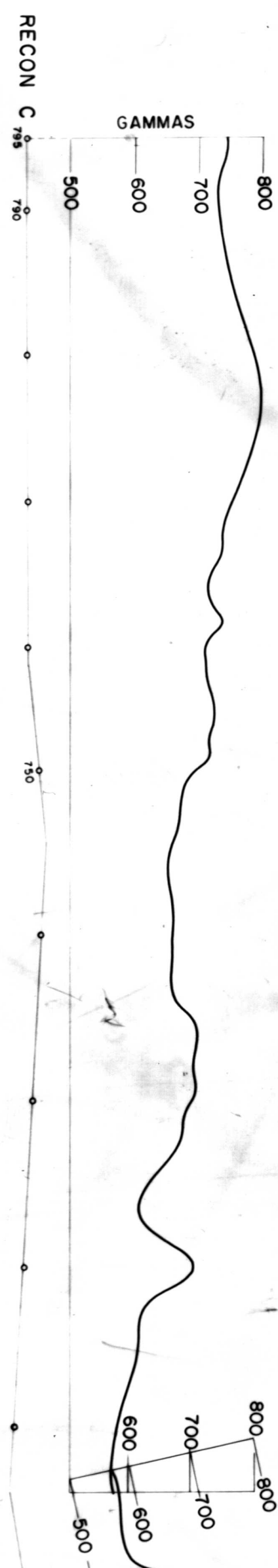
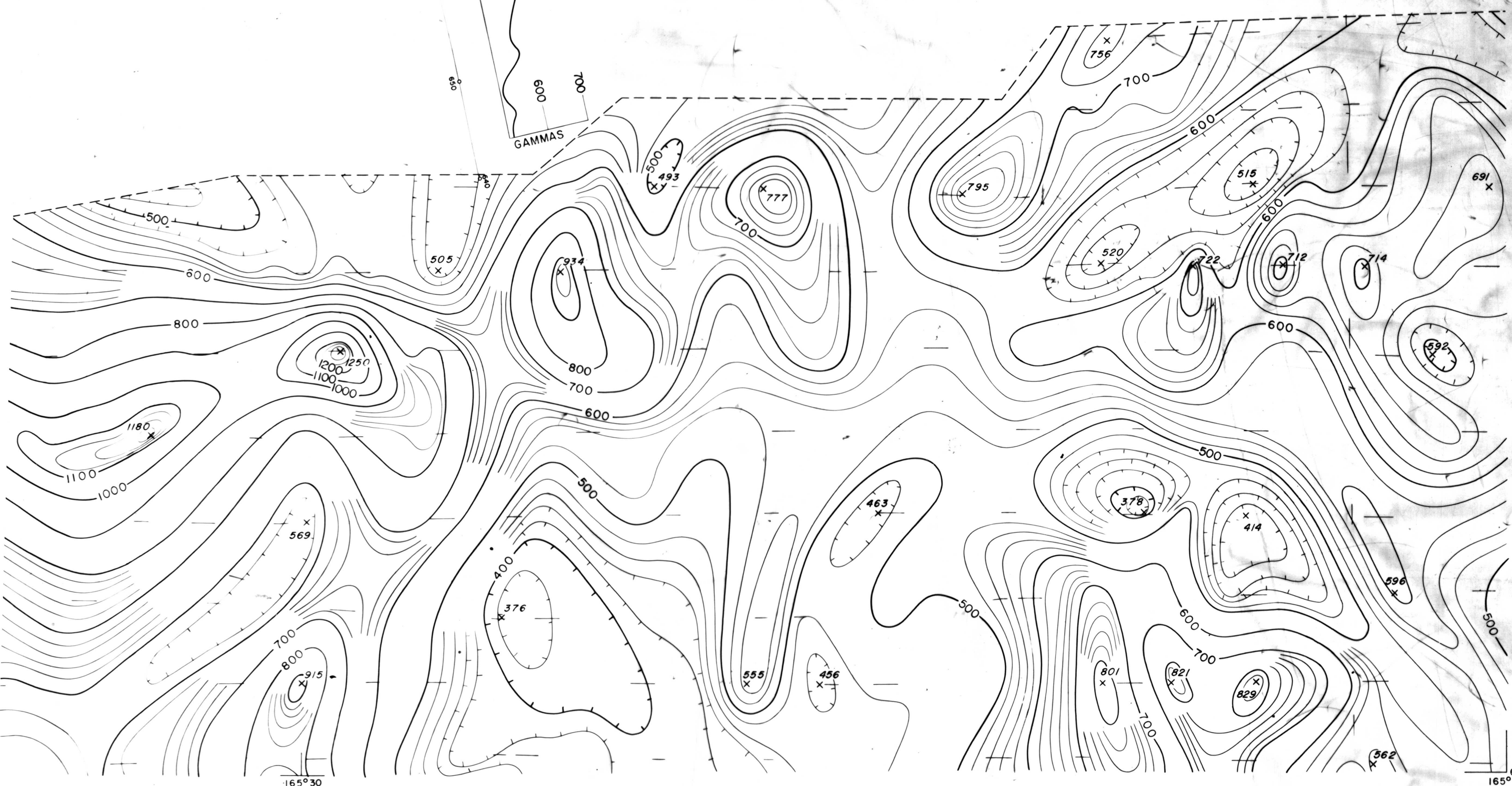


165°30'

165°00'
65°15'



INDEX MAP OF ALASKA SHOWING LOCATION OF SEWARD PENINSULA AIRBORNE GEOPHYSICAL SURVEYS, 1968. SEE DETAILED INDEX FOR ACTUAL COVERAGE.



Flown and compiled by Lockwood, Kessler, and Bartlett, Inc., 1968.

ENINSULA AREA, ALASKA

AEROMAGNETIC MAP AND PROFILES OF PART OF THE
SEWARD PENINSULA ALASKA
SHEET NUMBER 3 OF 11

LKB 1968
380