

SCHLUMBERGER

DUAL INDUCTION - LATEROLOG

| | |
|------------------------------------------------------------------------------------------------------------------------------------------|-------------------------------------|
| COUNTY DONA ANA FIELD or LOCATION WATER WELL WELL SMR-5 COMPANY BOYD & SON DRILLING CO. | COMPANY BOYD & SON DRILLING COMPANY |
| WELL SMR-5 FIELD WATER WELL | |
| COUNTY DONA ANA STATE NEW MEXICO | |
| LOCATION SE 1/4 SW 1/4 SE 1/4 Sec. 14 Twp. 21S Rge. 5E | Other Services: PML |
| Permanent Datum: GROUND LEVEL, Elev. 3950 Log Measured From GROUND LEVEL Ft. Above Perm. Datum Drilling Measured From GROUND LEVEL | Elev.: K.B. D.F. G.L. 3950 |
| Date 12-21-67 | |
| Run No. ONE | |
| Depth—Driller 666 | |
| Depth—Logger 657 | |
| Btm. Log Interval 653 | |
| Top Log Interval 235 | |
| Casing—Driller 10" @ 245 @ @ | |
| Casing—Logger 235 | |
| Bit Size 7 7/8 | |
| Type Fluid in Hole FRESH MUD | |
| Dens. Visc. 38 | |
| pH Fluid Loss ml ml ml ml | |
| Source of Sample PIT | |
| R _m @ Meas. Temp. 4.0 @ 58°F @ °F @ °F | |
| R _{mf} @ Meas. Temp. 2.8 @ 58°F @ °F @ °F | |
| R _{mc} @ Meas. Temp. @ °F @ °F @ °F | |
| Source: R _{mf} R _{mc} M | |
| R _m @ BHT @ °F @ °F @ °F | |
| R _{mf} @ BHT @ °F @ °F @ °F | |
| R _{mc} @ BHT @ °F @ °F @ °F | |
| Time Since Circ. | |
| Max. Rec. Temp. °F °F °F °F | |
| Equip. Location 3722 HOBBS | |
| Recorded By LEFLER | |
| Witnessed By BOYD & DOTY | |

The well name, location and borehole reference data were furnished by the customer.

REMARKS

Changes in Mud Type or Additional Samples

| Date | Sample No. | Depth—Driller | Type Fluid in Hole | Dens. | Visc. | pH | Fluid Loss | Source of Sample | R _m @ Meas. Temp. | R _{mf} @ Meas. Temp. | R _{mc} @ Meas. Temp. | Source: R _{mf} R _{mc} | R _m @ BHT | R _{mf} @ BHT | R _{mc} @ BHT |
|------|------------|---------------|--------------------|-------|-------|----|------------|------------------|------------------------------|-------------------------------|-------------------------------|-----------------------------------------|----------------------|-----------------------|-----------------------|
| | | | | | | | | | @ | @ | @ | @ | @ | @ | @ |

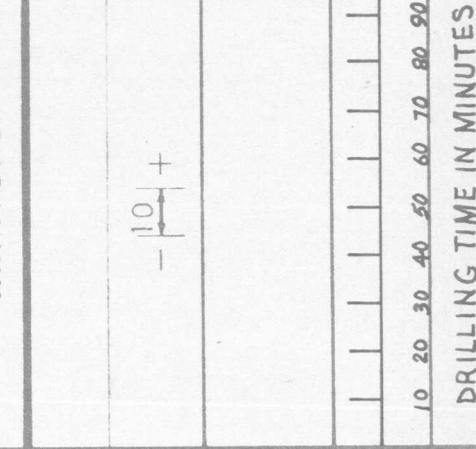
C.D.: S.O.: 11/2
Equip. Used Cart. No. DIC-B-56
Panel No. DIP-A-114
Sonde No. DIS-B-76
IAP No. MMP-B-173
SBR = 1

Check one, filling in blanks where applicable:
 Surface determined sonde errors used for ILM and ILD.
 ILM and ILD sonde errors corrected for inch borehole signal at R_m =
 ILM and ILD zeros set in hole at depth of feet.

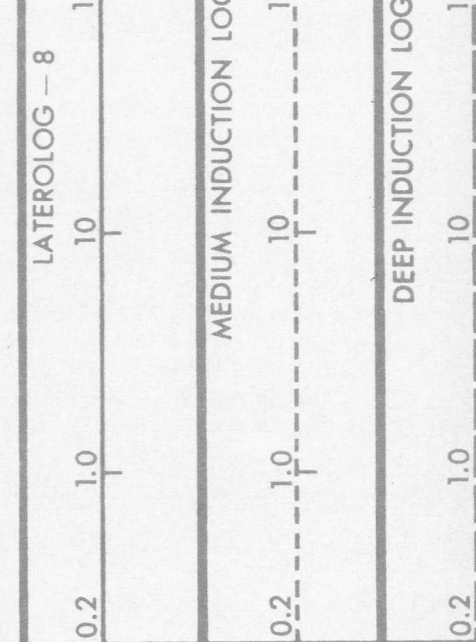
SPONTANEOUS-POTENTIAL millivolts

DEPTHS

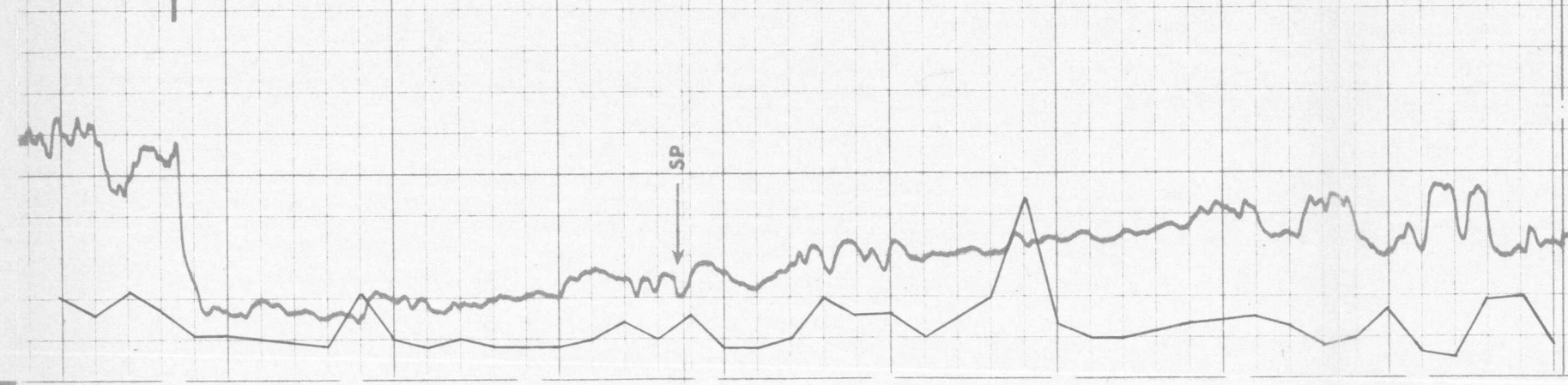
RESISTIVITY ohms. m²/m



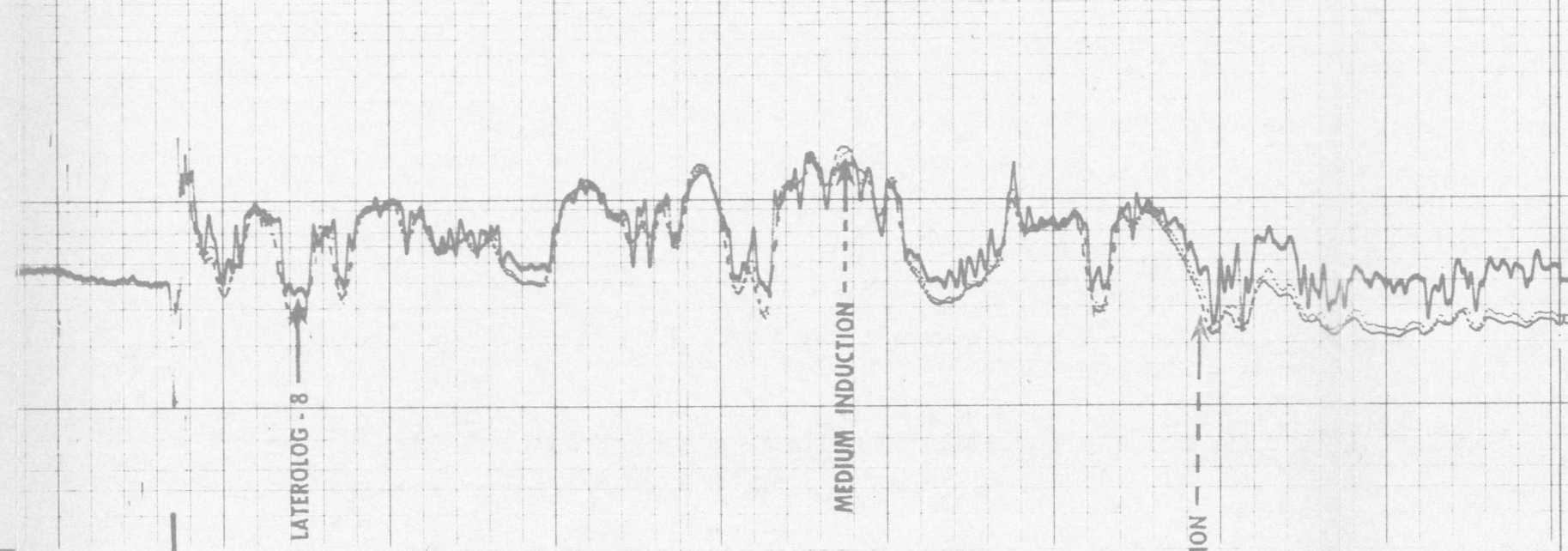
10 20 30 40 50 60 70 80 90
DRILLING TIME IN MINUTES



0.2 1.0 10 100 1000 2000
LATEROLOG - 8
MEDIUM INDUCTION LOG
DEEP INDUCTION LOG



0200 0300 0400 0500 0600
Casing
DEEP-INDUCTION
F. R.



0.2 1.0 10 100 1000 2000
LATEROLOG - 8
MEDIUM INDUCTION LOG
DEEP INDUCTION LOG

Figure 3c.--Dual induction laterolog of test well SMR-5, White Sands

Missile Range, Dona Ana County, N. Mex.