

170-12's

UNITED STATES DEPARTMENT OF THE INTERIOR
GEOLOGICAL SURVEY

Maps showing locations of holes drilled in 1953 to 1955

by U.S. Geological Survey, Deer Flat and adjacent
areas, San Juan County, Utah

By T. L. Finnell, P. C. Franks, O. T. Marsh,
and D. A. Brew

Open-file report

1970

This report is preliminary and has not
been edited or reviewed for conformity
with U.S. Geological Survey standards.

Public Information Office
Geological Survey
Salt Lake City, Utah

Maps showing locations of holes drilled in 1953 to 1955
by U.S. Geological Survey, Deer Flat and adjacent
areas, San Juan County, Utah.

From August 24, 1953, to October 6, 1955, the U.S. Geological Survey drilled 265 diamond-drill holes in the Deer Flat and adjacent areas, White Canyon district, San Juan County, Utah, to explore for uranium-bearing deposits. The deposits are primarily in the Shinarump Member of the Upper Triassic Chinle Formation.

The accompanying maps of the area explored are an index map (fig. 1) and three others showing locations of drill holes (figs. 2, 3, and 4). Logs of 262 holes identified on these maps may be inspected at the U.S. Geological Survey Library, Building 25, Federal Center, Denver, Colo. 80225, and at the U.S. Atomic Energy Commission Office, Grand Junction, Colo. 81501. The other three holes are on land controlled by the U.S. Atomic Energy Commission, and inquiry as to the availability of the logs for them should be directed to that agency.

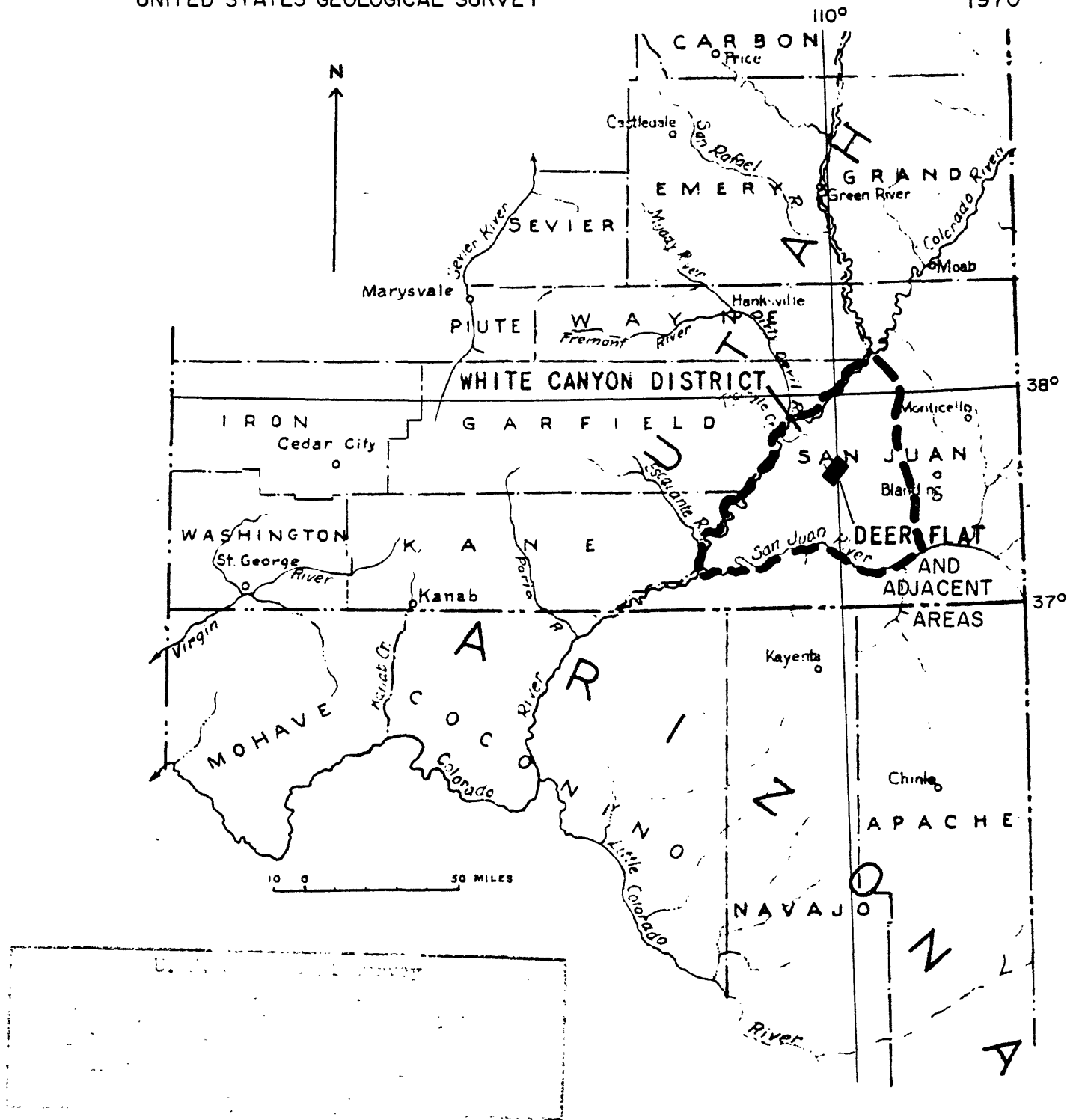


Figure 1.-- Index map of parts of Utah and Arizona showing location of Deer Flat and adjacent areas, San Juan County, Utah

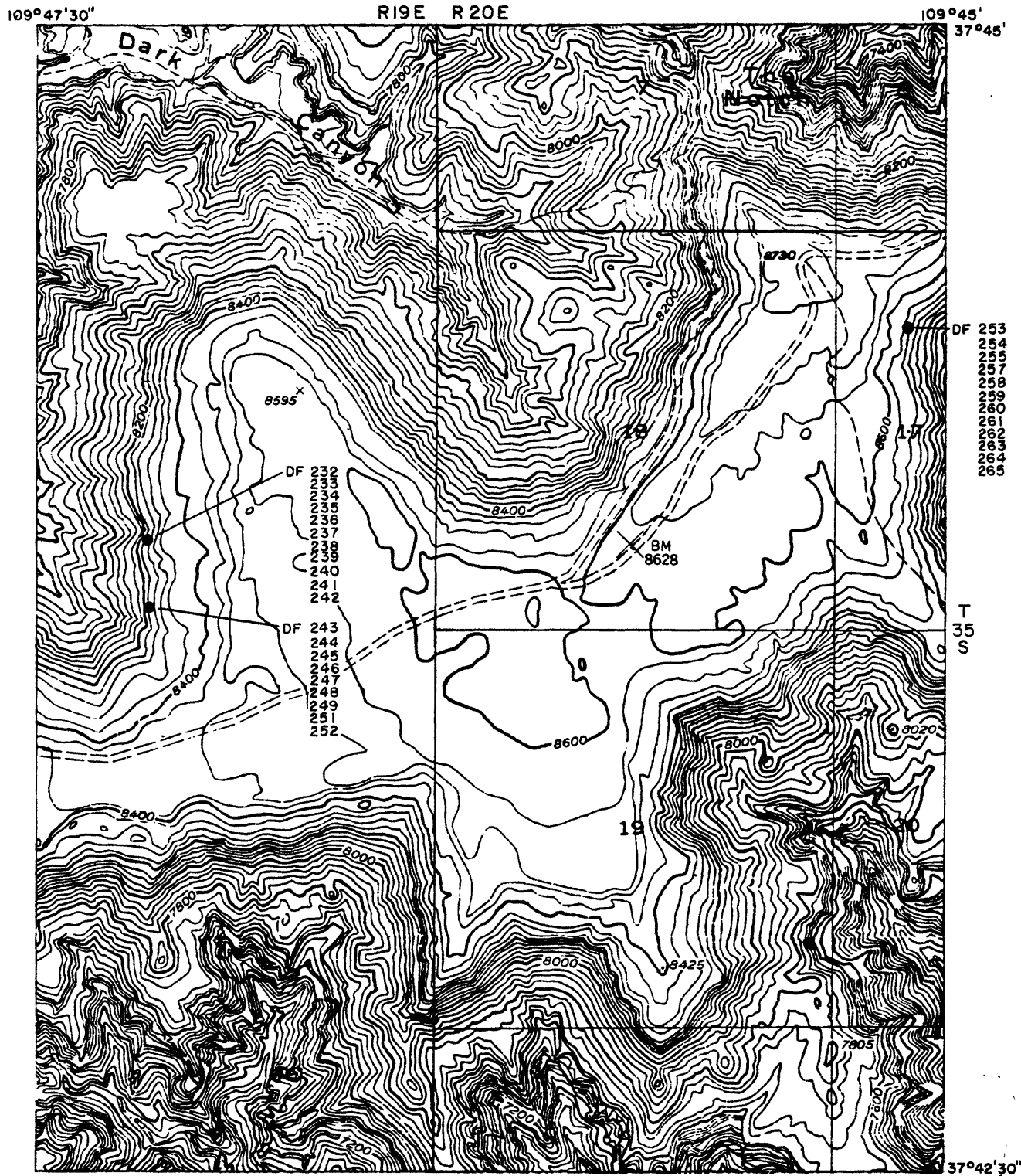


Figure 3.-- Map showing locations of U.S. Geological Survey drill holes in the northeastern part of Elk Ridge 3 NE quadrangle, San Juan County, Utah

U. S. Geological Survey
OPEN FILE 1970
This map or illustration is preliminary
and has not been edited or reviewed for
conformity with Geological Survey

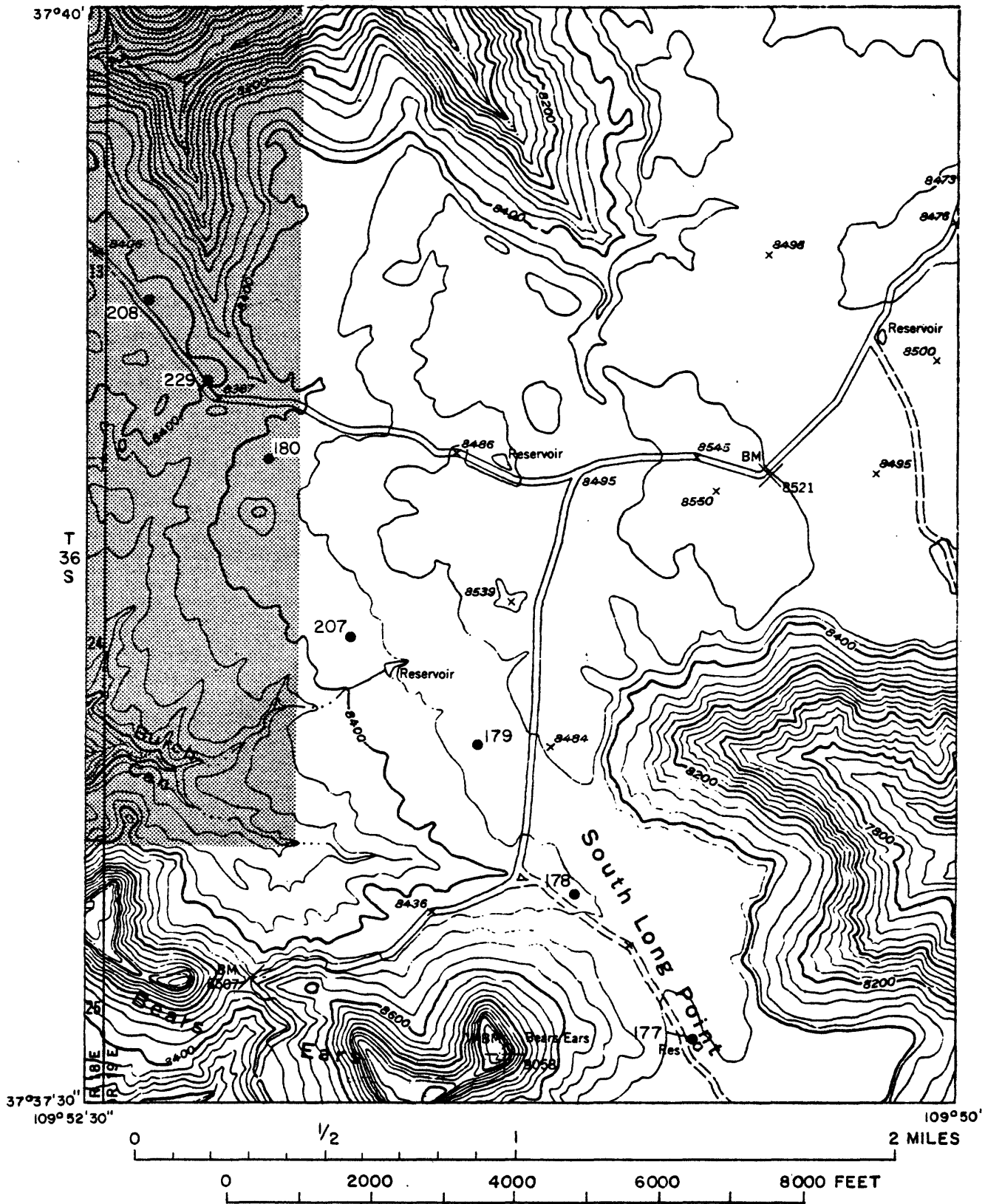


Figure 4.--Map showing locations of U.S. Geological Survey drill holes in the southwestern part of Elk Ridge 3 NE quadrangle, San Juan County, Utah
 Stippled area is land withdrawn for use of the U. S. Atomic Energy Commission

U. S. Geological Survey
 OPEN FILE REPORT
 This report is preliminary
 and is subject to revision
 and is not to be used for
 engineering purposes without
 consultation with the Geological Survey