

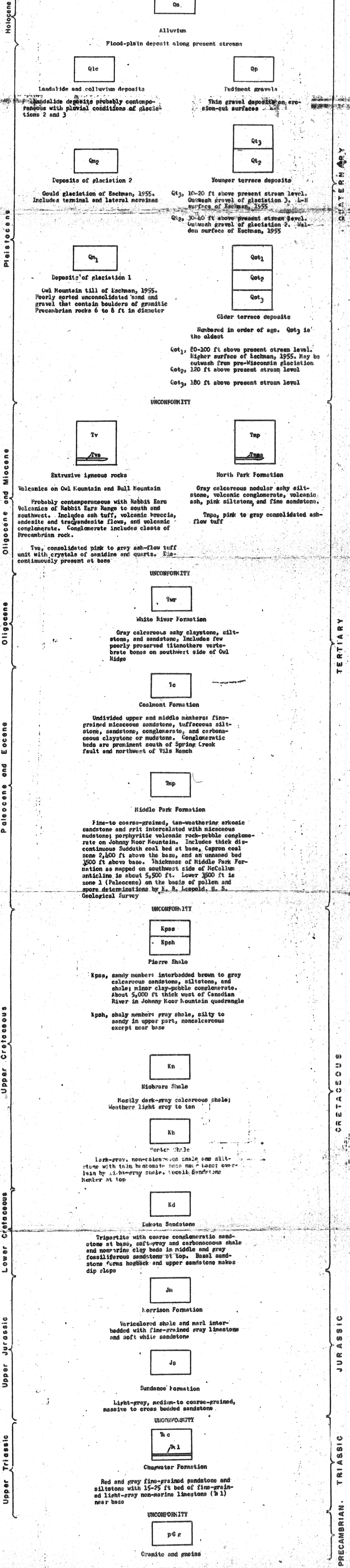
EXPLANATION FOR PRELIMINARY GEOLOGIC MAP OF THE GOULD QUADRANGLE
NORTH PARK, JACKSON COUNTY, COLORADO

By Douglas M. Kinney

SCALE 1:48,000

This illustration is preliminary and has not been edited or reviewed for conformity with U. S. Geological Survey standards or nomenclature.

70-183



TERTIARY
CRETACEOUS
JURASSIC
TRIASSIC
PRECAMBRIAN

REFERENCES

Eschman, D. F., 1955, Glaciation of the Michigan River Basin, North Park, Colo.: The Journal of Geology, v 63, p. 197-213

SYMBOLS

