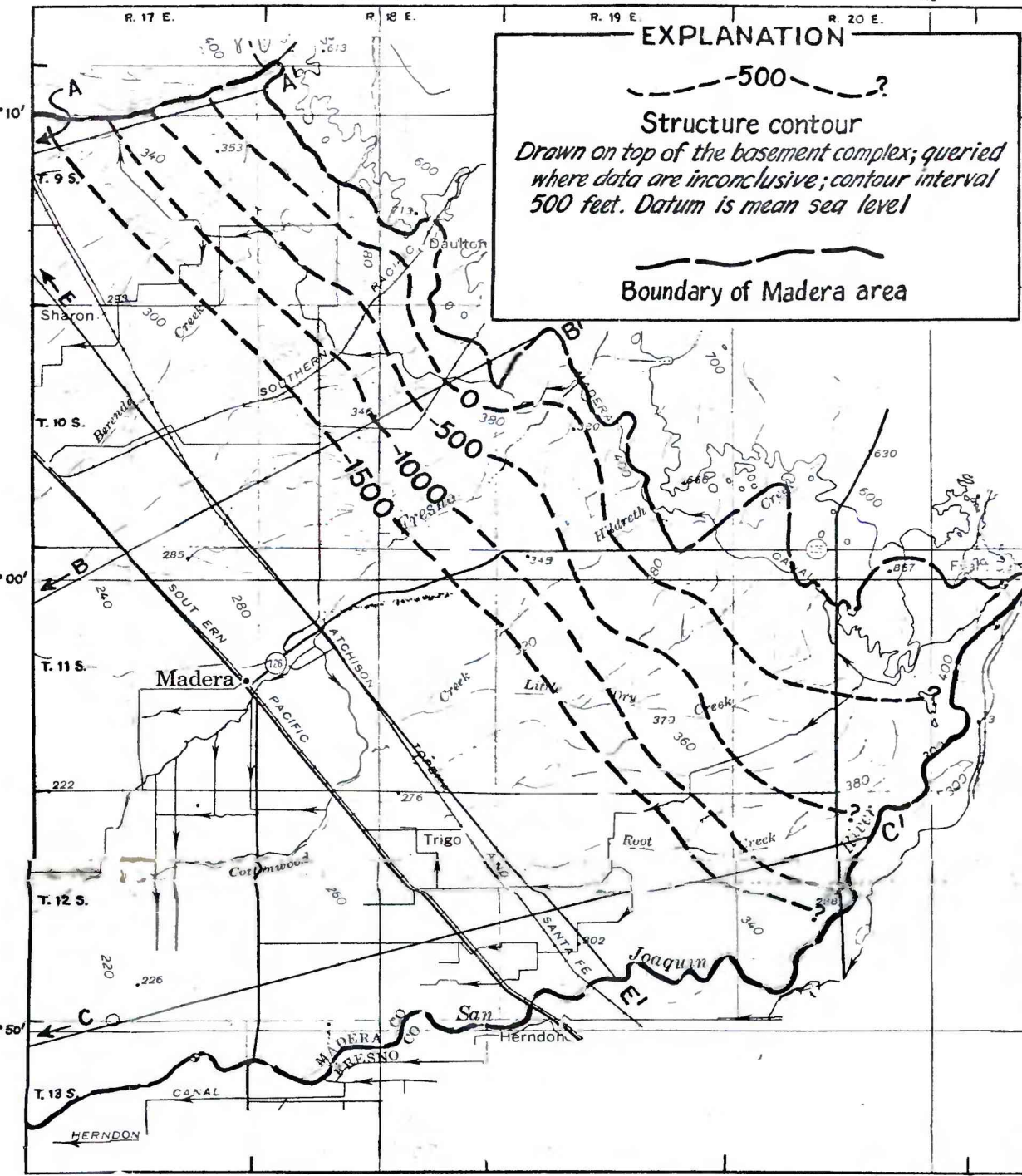
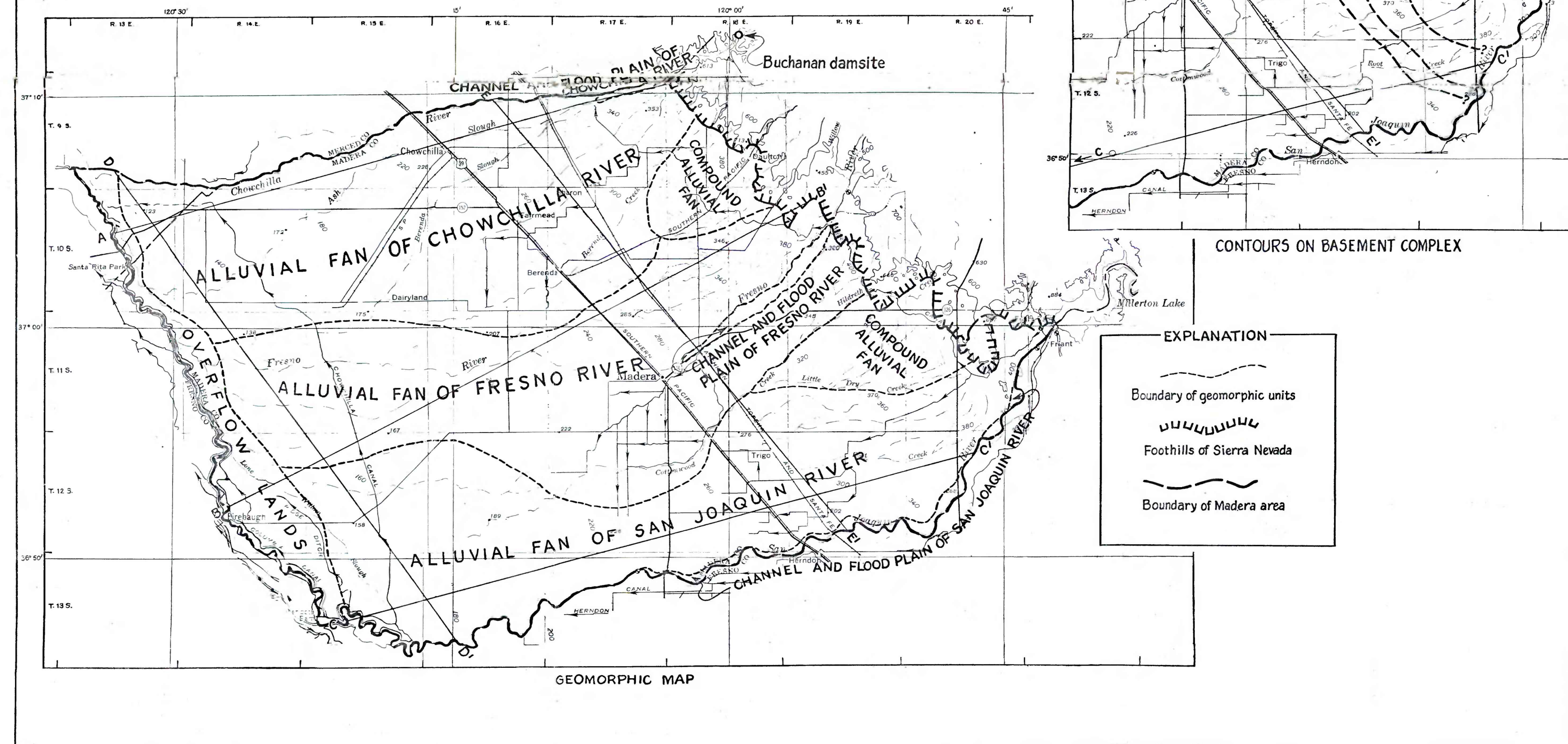


GEOLOGIC MAP



CONTOURS ON BASEMENT COMPLEX

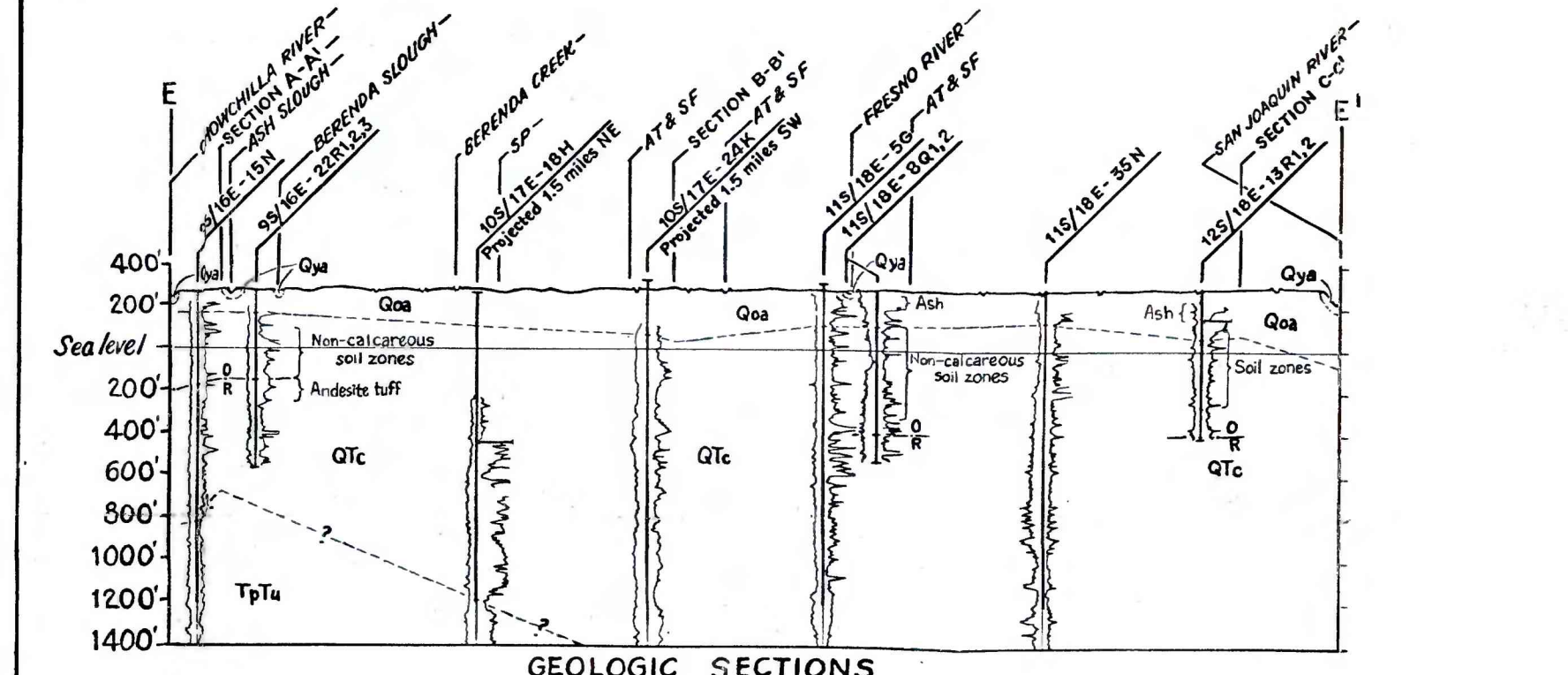
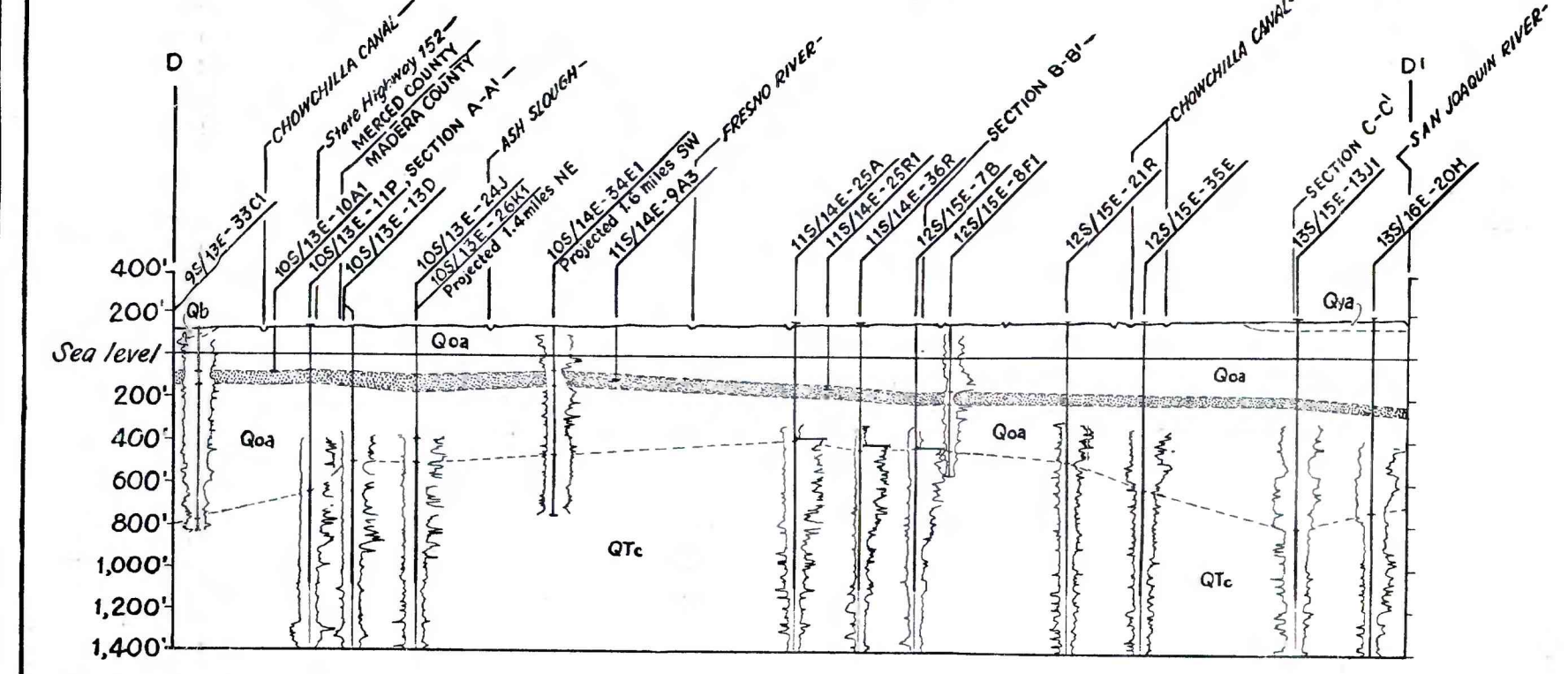
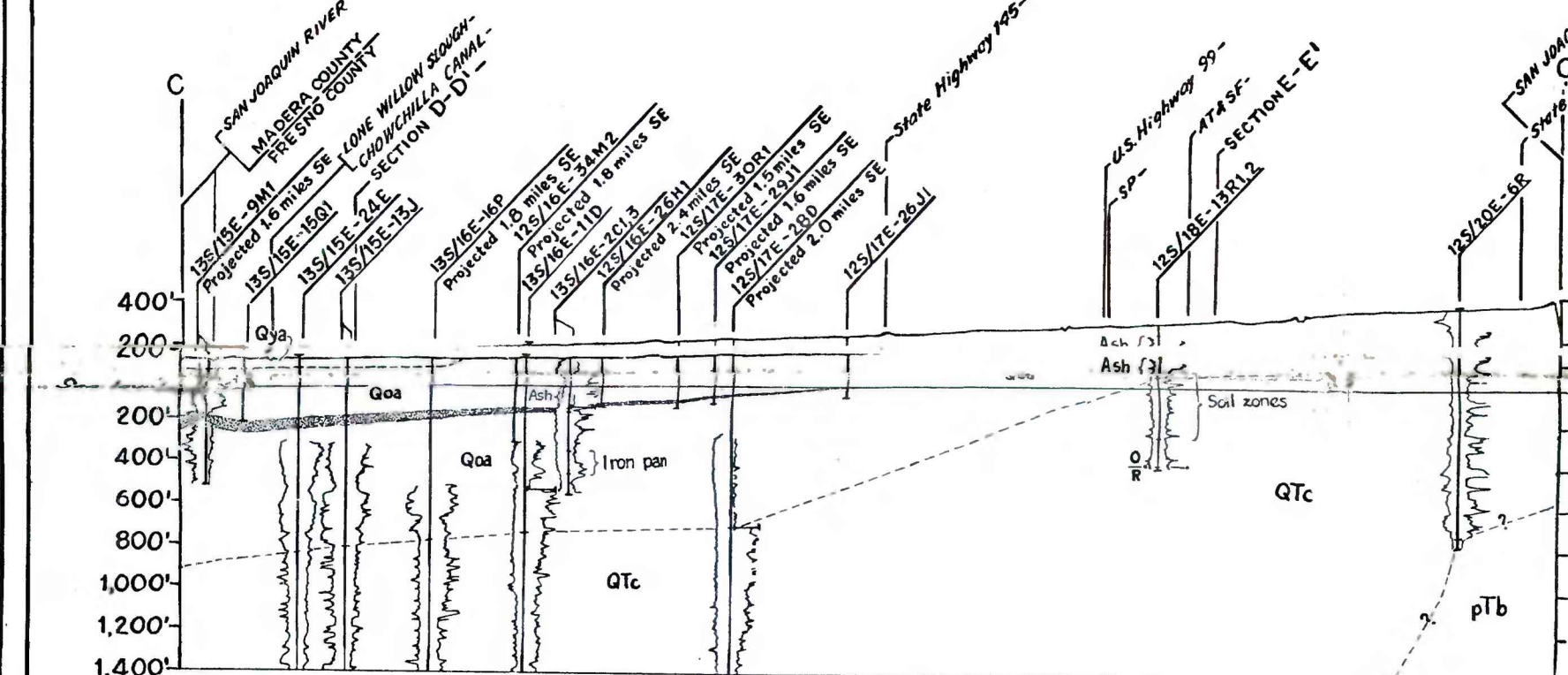
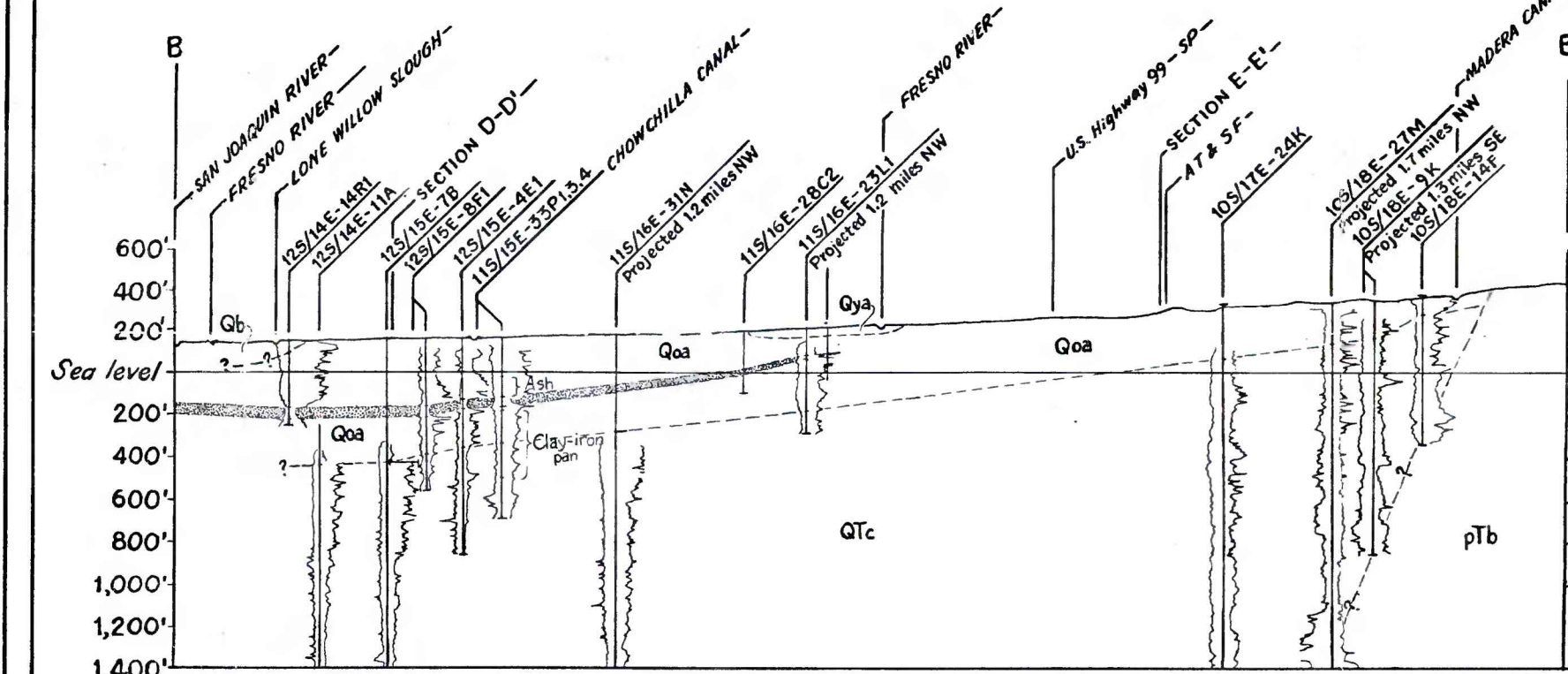
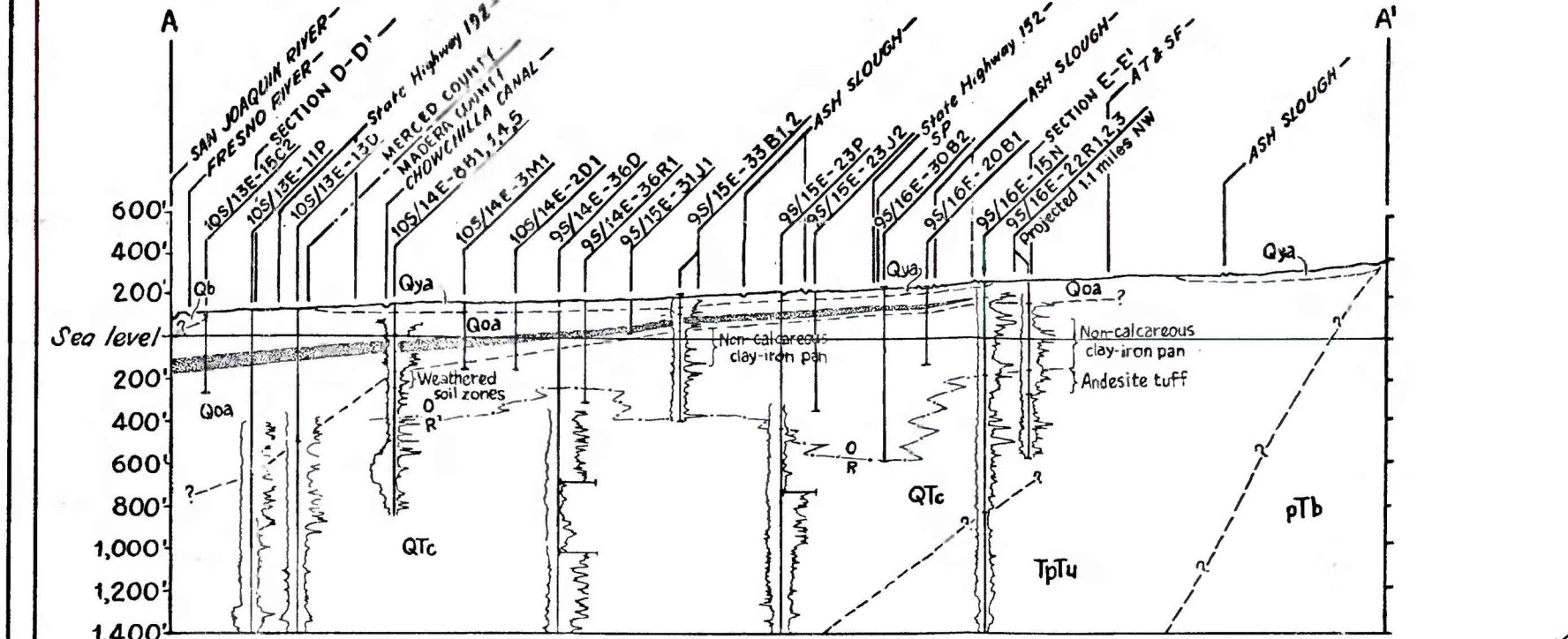


GEOMORPHIC MAP

Base from U.S. Geological Survey, Central Valley, California, Delta Area, 1958 1:250,000

Contour interval 100 feet
Contours at 20 foot interval are shown in valley area where space permits
Datum is mean sea level

TRUE NORTH
MAGNETIC NORTH
APPROXIMATE MEAN DECLINATION, 1970



GEOLOGIC SECTIONS

EXPLANATION

UNCONSOLIDATED DEPOSITS

Quaternary

Flood-basin deposits

Younger alluvium

Quaternary

Lacustrine and marsh deposits

Older alluvium

Quaternary

Continental deposit of Tertiary and Quaternary (?) age

UNCONFORMITY

CONSOLIDATED ROCKS

Tertiary and Quaternary

Marine and continental sedimentary rocks, undifferentiated

Pre-Tertiary and Tertiary

Basement complex

Pre-Tertiary

Contact

Queried where evidence is inconclusive

Contact between oxidized (O) and reduced (R) deposits

E-clay (a)

TOP OF WELL

BOTTOM OF WELL

Well symbol

CHANGE IN RESISTIVITY SCALE

Well with electric log

Horizontal scale same as scale of maps; vertical scale X 26.4. Datum is mean sea level